

Jurisdictional Annex XIX

Town of Windham

Town Profile

The Town of Windham is a Mountaintop Town in the west-central part of Greene County, within the northern boundary of the Catskill State Park. The Batavia Kill flows past the Hamlet of Windham. See Table XIX-1.

History: The Town of Windham was formed in March 1798, as a part of Ulster County. On March 25, 1800, the Town became the western half of Greene County. The towns of Ashland, Halcott, Hunter, Jewett, Lexington, Prattsville and Windham were created from what some called “Old Windham.” In 1813, the towns of Lexington and Hunter were taken from the southern part of Windham. In 1833, the Town of Prattsville was created from the northwest corner of Windham and in 1848 the Town of Ashland was formed from parts of Prattsville and Windham.

Form of Government: The Town is governed by an elected Supervisor and Town Board consisting of four councilmen. The Town Board sets policy, approves the budget, adopts local laws, implements policies, and administrates local affairs.

Growth and Development Trends: The Town of Windham negotiated with NYCDEP to expand its designated hamlet areas; the agreement went into effect in 2010. The Town has identified the expanded areas as suitable for future growth. The expanded areas include the South Street and Route 23 corridor, portions of County Routes (CR) 40 and 65 in Hensonville, and CR 56 (Maplecrest Hamlet). The Town also conducted a *Generic Environmental Impact Statement* (GEIS) in 2010.

U.S. Census statistics show that the Town grew from 1,660 to 1,703 people between 2000 and 2010 (see Table XIX-1), and the number of housing units increased from 2,002 to 2,457. See Table XIX-1.

Recent Hazard Events

In the last 5 years, there were a few storms that were significant for the Town, in particular Hurricane Irene and a severe snowstorm in 2014, but details of damages are not available.

Town Contact Information

PRIMARY POINT OF CONTACT:

Robert J. Pelham, Supervisor
PO Box 96, 371 State Route 296
Hensonville, NY 12436
518.734.4170
Email: windhambette@mhccable.com

ALTERNATIVE POINT OF CONTACT:

Dominick Caropreso, Floodplain
Administrator
PO Box 96, 371 State Route 296
Hensonville, NY 12436
518.734.4170

Table XIX-1: Town of Windham Statistics

2010 Population	Total Land Area	Land/Water Area
1,703	45.34 sq. mi.	45.20/0.14 sq. mi.

Summary of Vulnerabilities

The Town of Windham is one of Greene County's River Towns. Flooding is a concern related to storm water in particular. Table XIX-2 details the number of parcels that are located in or touch the floodway, 100-year floodplain, or 500-year floodplain.

The risk analysis described in Chapter 4 of the main plan document notes that the Town of Windham has 2 of the 7 high hazard dams located in the town, and has high landslide susceptibility as well. The town has one of the highest loss estimates in the County for flooding (100-year) and high winds (500-year).

As shown in Figure XIX-1, three critical facilities are located in the floodplain in the Town of Windham, including the Windham Hose Co #1 Fire Station, the Windham-Ashland-Jewett Central School, and the wastewater treatment plant.

Table XIX-2: Number of Parcels in Flood Hazard Areas, Town of Windham

Floodway	100-Year Floodplain	500-Year Floodplain
239	513	548

Source: 2015 FEMA Flood Insurance Rate Map



*Flooding during Hurricane Irene
(Courtesy, Greene County Emergency Services)*



*Flooding in Windham
(Courtesy, Greene County Emergency Services)*

Capability Assessment

Each municipality analyzed four capability assessment areas that are relevant for reducing long-term vulnerabilities through mitigation planning. These four areas include: Planning (legal) and Regulatory, Administrative and Technical, Financial, and Education and Outreach. Changes that have occurred since the 2009 *Greene County Multi-Jurisdictional All-Hazard Mitigation Plan*¹ (HMP) are described below.

Planning (legal) and Regulatory: Since the 2009 HMP, there have been a number of developments: (1) The Town has a *NY Rising Community Reconstruction Plan* from 2014, and (2) An LFA was completed in October 2015 for 8.8 miles of the Batavia Kill to model flood vulnerabilities and potential mitigation solutions. A Flood Advisory Committee was formed to guide

Relevant Documents and Ordinances

- ✓ *Comprehensive Plan* (2002)
- ✓ Building Code
- ✓ Subdivision Ordinance
- ✓ *Emergency Response Plan*
- ✓ *Batavia Kill Stream Management Plan* (2007)
- ✓ NFIP Flood Damage Prevention Ordinance (2008)
- ✓ Generic Environmental Impact Statement (2010)
- ✓ *NY Rising Community Reconstruction Plan* (2014)
- ✓ Local Flood Analysis (2015)

¹ <http://greenegovernment.com/wp-content/uploads/2015/01/HMP.pdf>

the LFA process and long-term flood mitigation projects and initiatives in the Town; recommendations from the LFA are included in Windham’s proposed mitigation actions discussed below.

The Town has a number of relevant documents and ordinances, as listed in the “Relevant Documents and Ordinances” text box.

Administrative and Technical: In addition to the Town Board, the Town has a Town Clerk, Assessors Office, Highway Department, Code Enforcement Office, and consulting engineers.

A Memorandum of Understanding was adopted with GCSWCD for implementing the *Batavia Kill Stream Management Plan* (2007).

Financial: While the Town has been very successful in planning for its recovery post-Hurricane Irene, there have not been any identifiable or confirmable changes in locally based financial capabilities for reducing long-term vulnerability since the 2009 HMP. The Town has access to Catskill Watershed Corporation funding, among other grant programs.

Education and Outreach: The Town has conducted and completed outreach and education efforts since Hurricane Irene devastated the community.

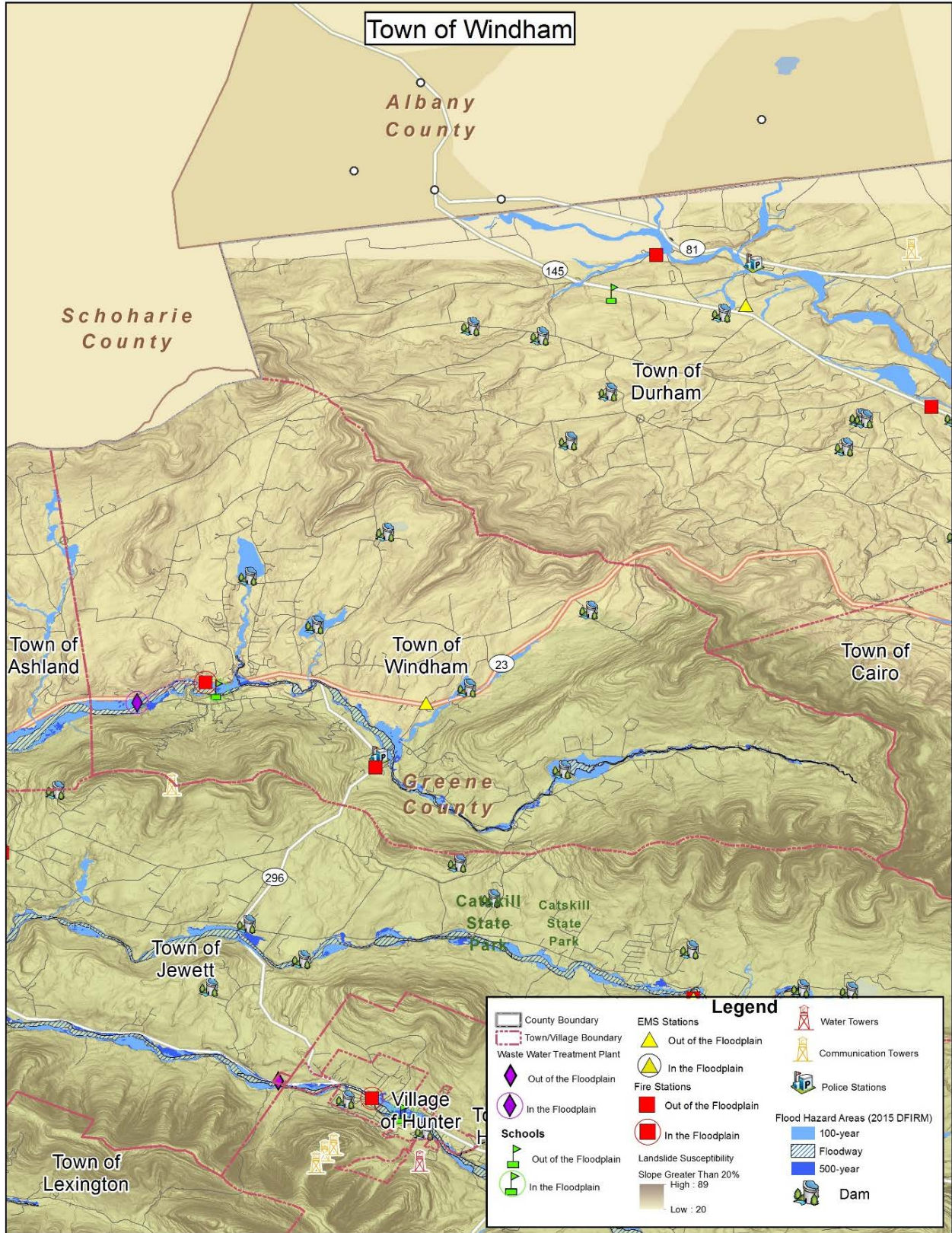


Figure XIX-2: Town of Windham Hazard Area Map

Mitigation Strategies

Hazard Mitigation Actions Completed or in Progress: The Town of Windham recently completed two planning efforts in 2014-2015: The *NY Rising Community Reconstruction Plan* and the LFA.

Table XIX-3: Summary of Town of Windham Mitigation Actions Completed or In Progress

Mitigation Action	Project
NY Rising Community Reconstruction Plan	Complete
LFA	Complete

Proposed Hazard Mitigation Actions: In addition to the Greene County actions discussed in this Plan, the Town of Windham has considered its individual needs related to risk and vulnerability and is pursuing or proposing the following hazard mitigation actions:

- (T)WIN-1: Culvert Replacement – Upgrade drainage infrastructure along CR 56 in the area of 97 CR 56 to improve stormwater runoff; install a 6 ft x 6 ft box culvert.
- (T)WIN-2: Back-up Power – Provide for emergency generators at Town of Windham emergency shelters.
- (T)WIN-3: Protect WWTP and Water systems – Consolidation with Ski Windham is complete
- (T)WIN-4: Local Flood Analysis Flood Mitigation Actions – Remove existing structures out of the floodway at #120 CR 65, and at #109 CR 65; replace Main Street (Rt. 23) Bridge and create floodplain bench on Mitchell Hollow Creek by acquiring and relocating three commercial structures. Conduct floodplain enhancement downstream of Church Street; this project would require buying out and relocating GNH Lumber.
- (T)WIN-5: Drainage Study in Hamlet of Hensonville – Perform drainage study in Hamlet of Hensonville on SR 296 and CR 65 to identify remediation of sheet flow flooding.
- (T)WIN-6: Mad (Pratt) Brook Stream Bank Restoration Alternatives – Continue to support the study of stream bank restoration alternatives.
- (T)WIN-7: Road Drainage and Condition Survey – Perform a town-wide survey of road drainage and condition alternatives.

The Town will also participate in the action identified for all municipalities to integrate this plan's actions with existing planning, consider hazards in future development decisions, focus on mitigation of repetitive loss properties, and attempt 500-year level protection for critical facilities.

Details about each proposed hazard mitigation action can be found in the individual Action Worksheets.