

GREENE COUNTY INFRASTRUCTURE INVENTORY AND DEVELOPMENT PROJECT

MAP BOOK OF FOCUS PARCELS

PREPARED FOR:

GREENE COUNTY ECONOMIC DEVELOPMENT AND TOURISM

411 MAIN STREET
CATSKILL, NEW YORK 12414

PREPARED BY:



Delaware Engineering, D.P.C.

28 Madison Avenue Extension
Albany, New York 12203
518-452-1290

AUGUST 2016





LEGEND

GREENE COUNTY WATER AND SEWER INFRASTRUCTURE GREENE COUNTY, NEW YORK

Focus Parcels:

-  County-Owned Parcels
-  Privately_Owned Parcels
-  MLS-Listed Parcels
-  Agricultural Parcels
-  Greene Co. Agricultural Distr. 124

Greene County RPS Assessors' Database:

-  Commercial/Public Sewer
-  Sewer Special District Code
-  Commercial/Public Water
-  Water Special District Code

Water and Sewer Infrastructure:










-  Community Septic System
-  Private Wastewater Treatment Plant
-  Public Wastewater Treatment Plant
-  Existing/Proposed Sewer Line
-  Private Water Treatment Plant
-  Public Water Treatment Plant
-  Public Well
-  Water Storage Tank
-  Existing Water Line

TABLE OF CONTENTS

Town of Ashland

Town of Athens

Village of Athens

Town of Cairo

Town of Catskill

Town of Coxsackie

Village of Coxsackie

Town of Durham

Town of Greenville

Town of Hunter

Town of Jewett

Town of Lexington

Town of New Baltimore

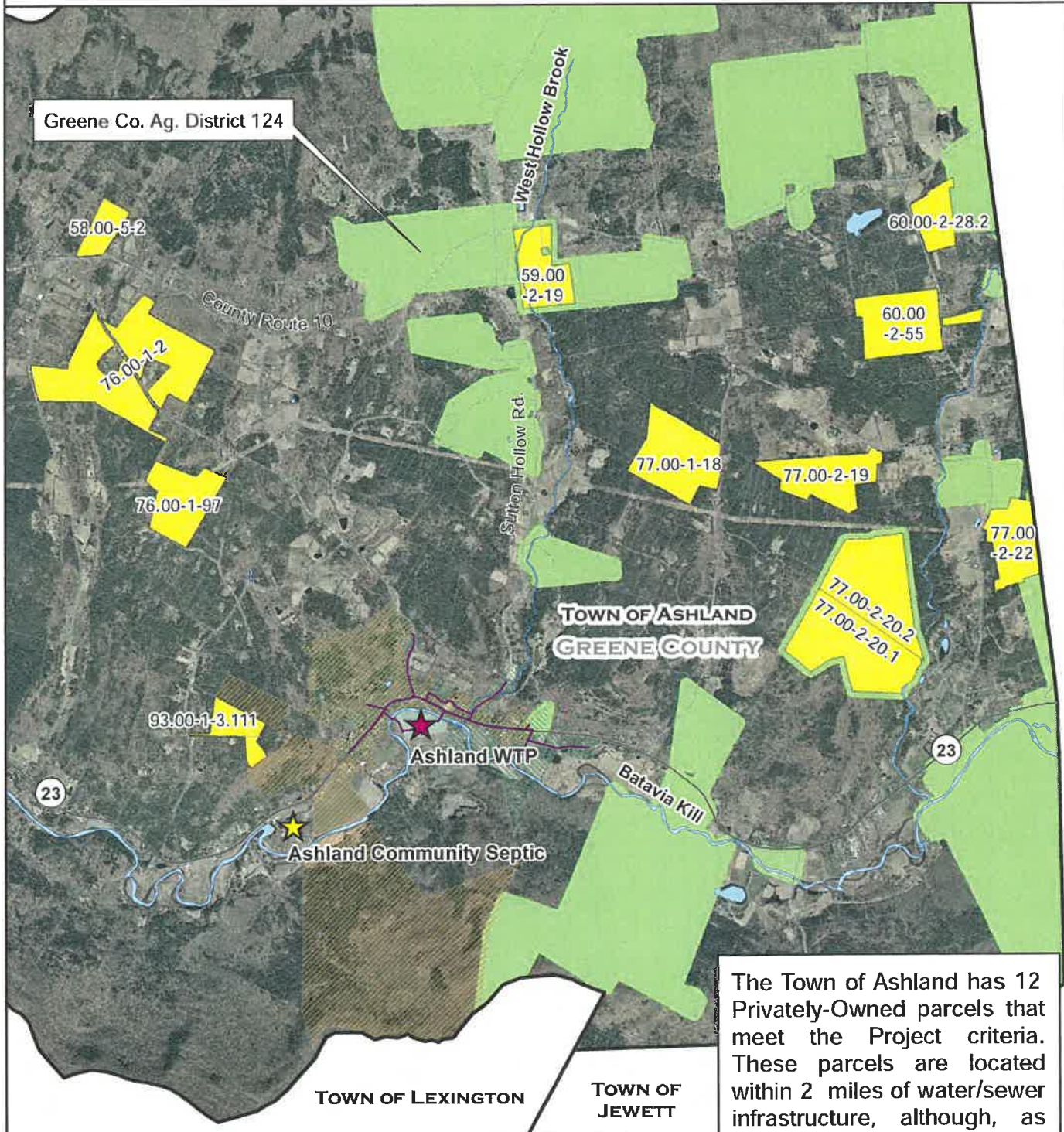
Town of Prattsville

Town of Windham





TOWN OF ASHLAND, GREENE COUNTY, NEW YORK

PREPARED AS PART OF THE GREENE CO. INFRASTRUCTURE INVENTORY AND DEVELOPMENT PROJECT



The Town of Ashland has 12 Privately-Owned parcels that meet the Project criteria. These parcels are located within 2 miles of water/sewer infrastructure, although, as with many municipalities with a community septic system, it will be difficult for a large user to hook-up to the system. The water system may have existing capacity for future users.

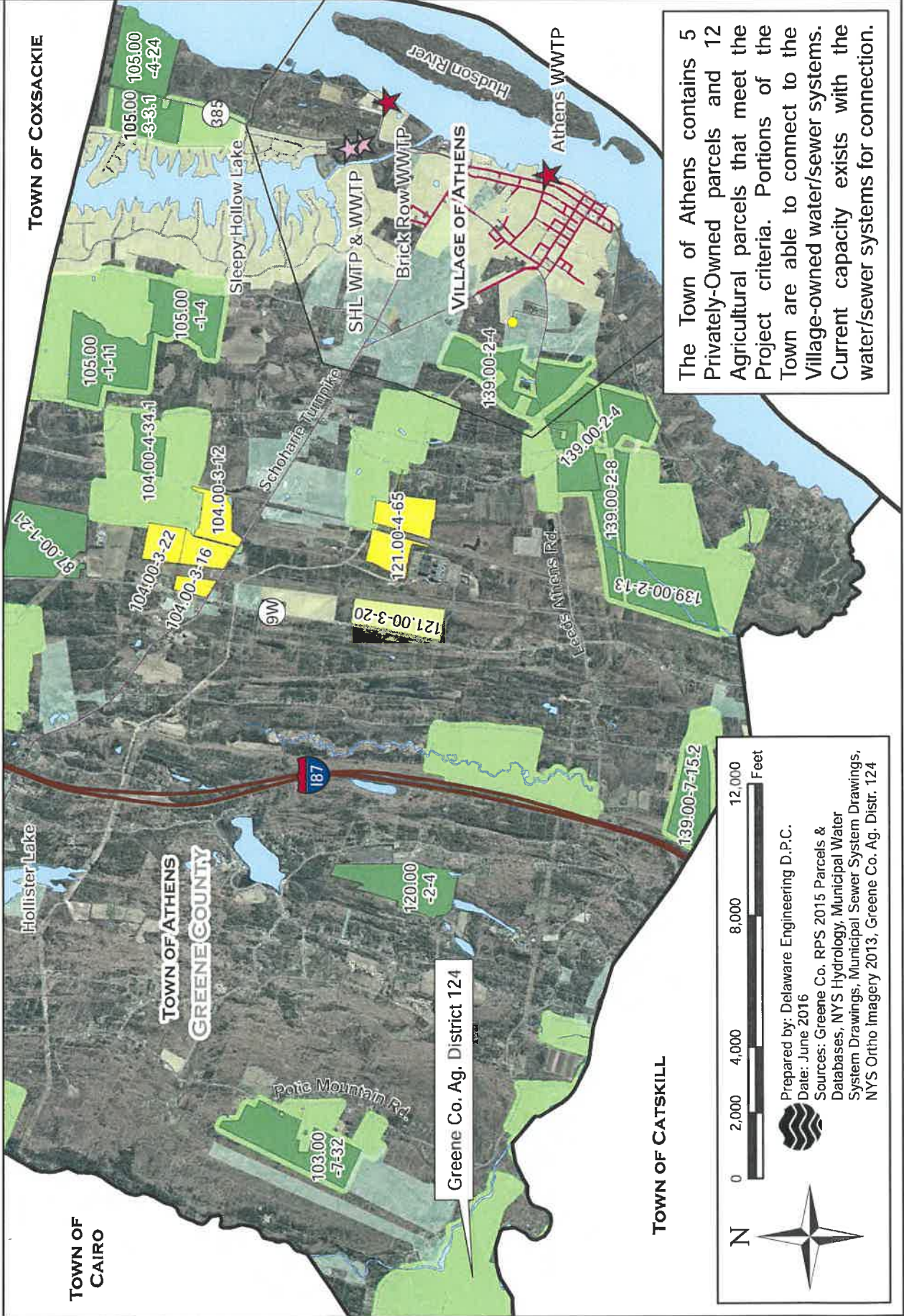



Prepared by: Delaware Engineering D.P.C.
 Date: June 2016
 Sources: Greene Co. RPS 2015 Parcels & Databases, NYS Hydrology, Municipal Water System Drawings, Municipal Sewer System Drawings, NYS Ortho Imagery 2013, Greene Co. Ag. Distr. 124



TOWN OF ATHENS, GREENE COUNTY, NEW YORK

PREPARED AS PART OF THE GREENE CO. INFRASTRUCTURE INVENTORY AND DEVELOPMENT PROJECT



The Town of Athens contains 5 Privately-Owned parcels and 12 Agriculturally parcels that meet the Project criteria. Portions of the Town are able to connect to the Village-owned water/sewer systems. Current capacity exists with the water/sewer systems for connection.

North Arrow

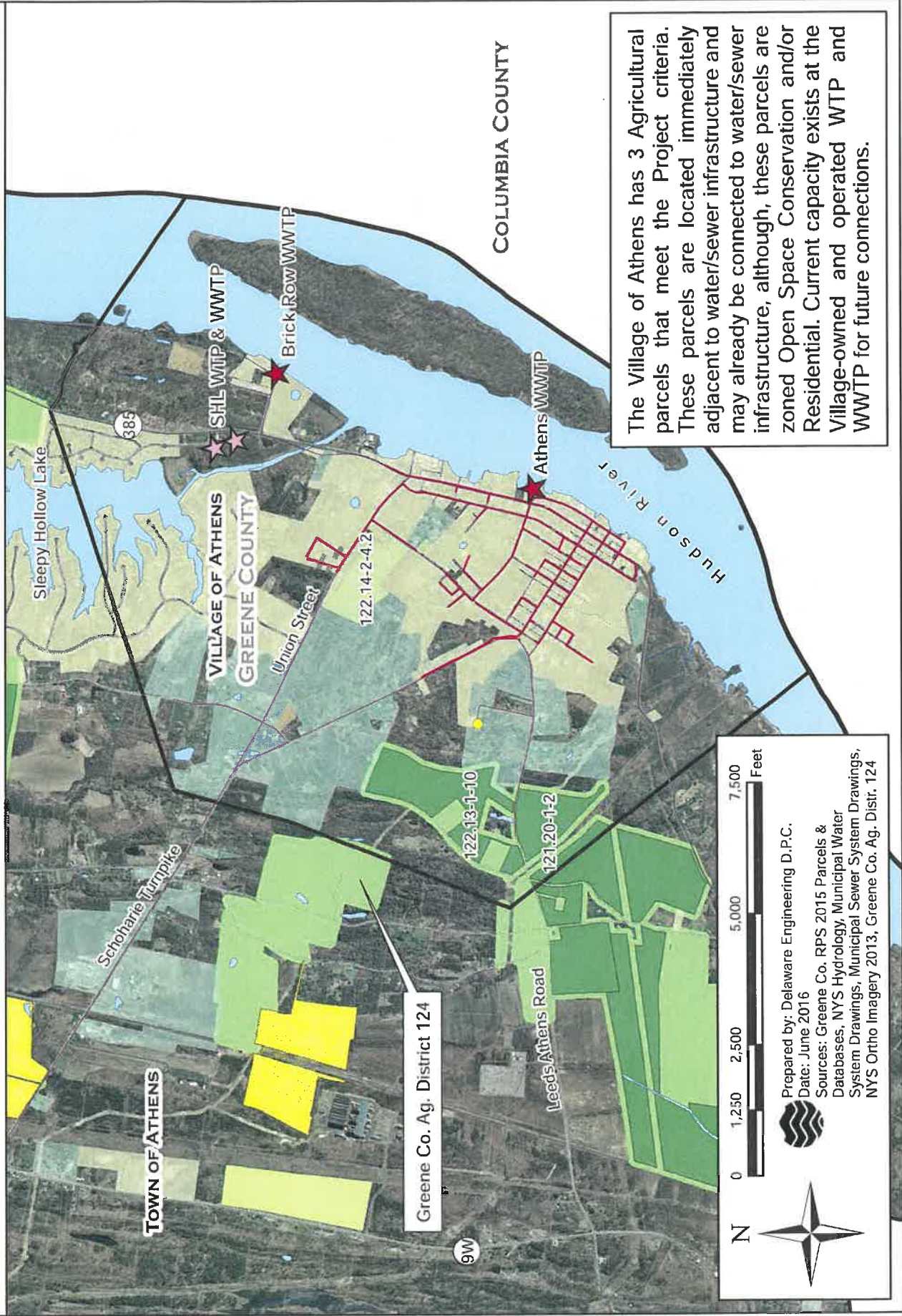
Scale: 0, 2,000, 4,000, 8,000, 12,000 Feet

Prepared by: Delaware Engineering D.P.C.
 Date: June 2016
 Sources: Greene Co. RPS 2015 Parcels & Databases, NYS Hydrology, Municipal Water System Drawings, Municipal Sewer System Drawings, NYS Ortho Imagery 2013, Greene Co. Ag. Distr. 124




VILLAGE OF ATHENS, GREENE COUNTY, NEW YORK

PREPARED AS PART OF THE GREENE CO. INFRASTRUCTURE INVENTORY AND DEVELOPMENT PROJECT



The Village of Athens has 3 Agricultural parcels that meet the Project criteria. These parcels are located immediately adjacent to water/sewer infrastructure and may already be connected to water/sewer infrastructure, although, these parcels are zoned Open Space Conservation and/or Residential. Current capacity exists at the Village-owned and operated WTP and WWTP for future connections.



 0 1,250 2,500 5,000 7,500 Feet

 Prepared by: Delaware Engineering D.P.C.

 Date: June 2016

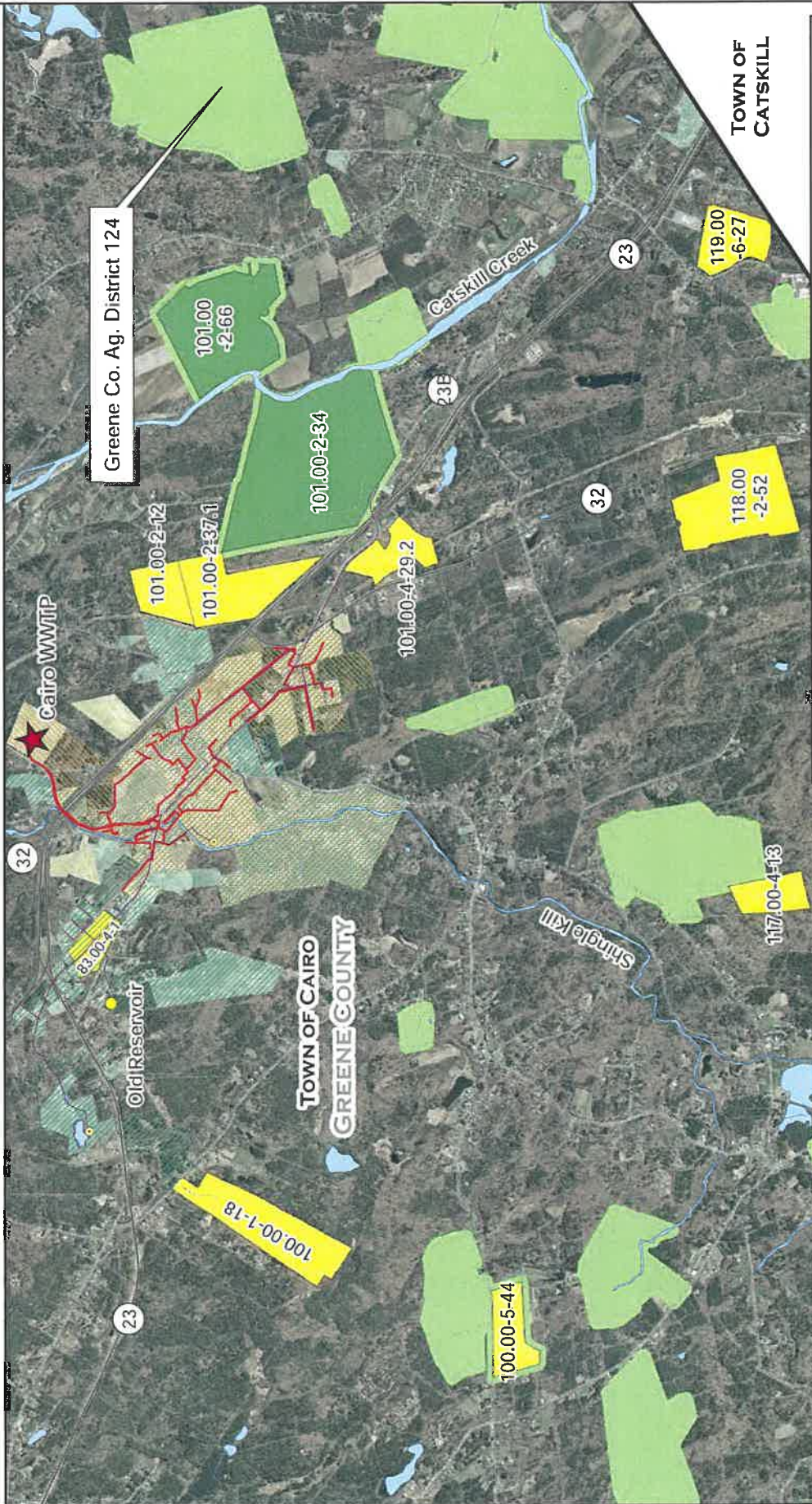
 Sources: Greene Co. RPS 2015 Parcels & Databases, NYS Hydrology, Municipal Water System Drawings, Municipal Sewer System Drawings, NYS Ortho Imagery 2013, Greene Co. Ag. Distr. 124

Greene Co. Ag. District 124



TOWN OF CAIRO, GREENE COUNTY, NEW YORK

PREPARED AS PART OF THE GREENE CO. INFRASTRUCTURE INVENTORY AND DEVELOPMENT PROJECT



Greene Co. Ag. District 124

N

0 1,500 3,000 6,000 9,000 Feet

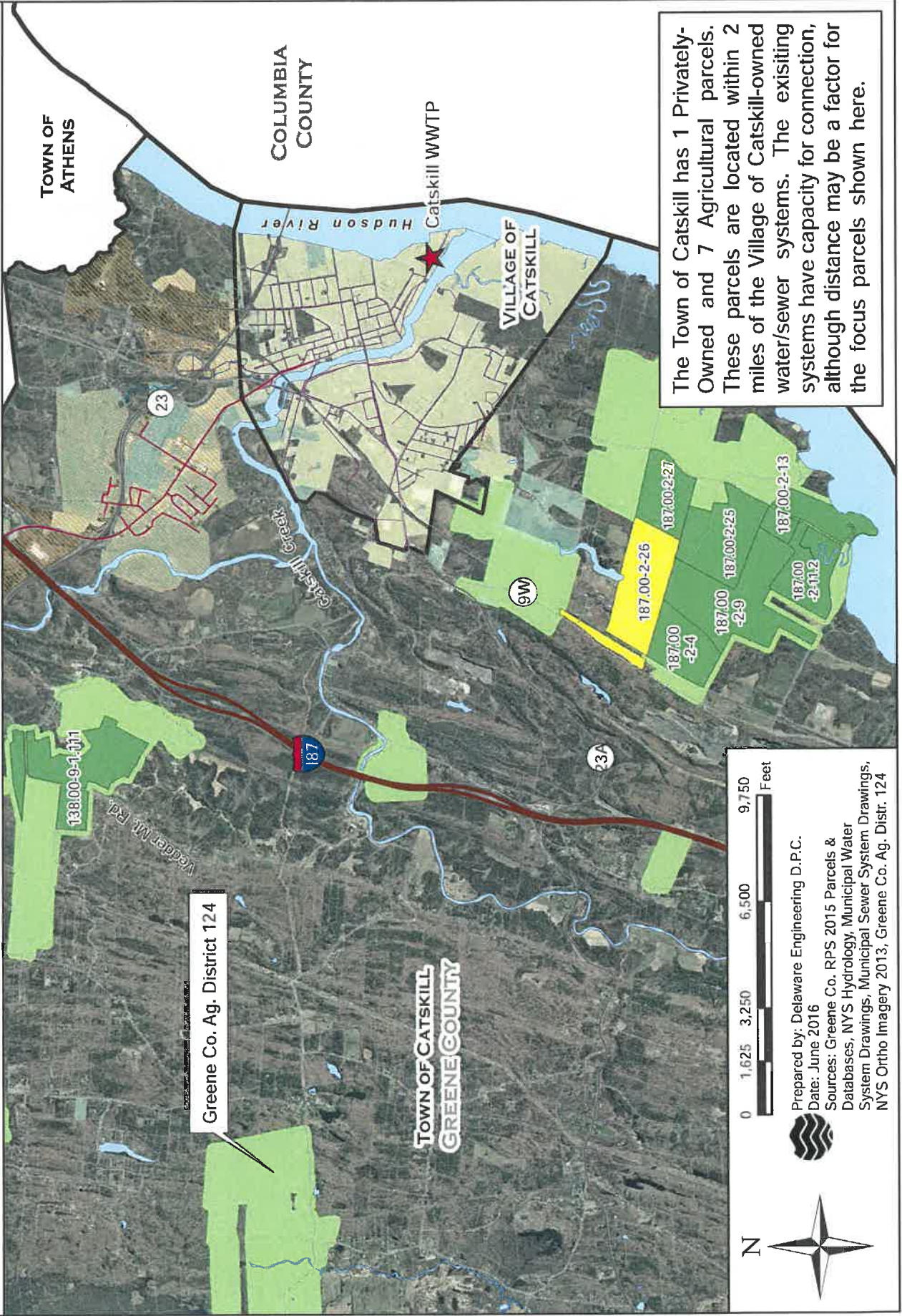
Prepared by: Delaware Engineering D.P.C.
 Date: June 2016
 Sources: Greene Co. RPS 2015 Parcels & Databases, NYS Hydrology, Municipal Water System Drawings, Municipal Sewer System Drawings, NYS Ortho Imagery 2013, Greene Co. Ag. Distr. 124

The Town of Cairo has 9 Privately-Owned and 2 Agricultural parcels that meet the Project criteria. These parcels are located within 2 miles of water and/or sewer infrastructure and some may already be connected to water/sewer infrastructure. Current connection capacity still exists within the water system Sewer connection may be limited to smaller users.



TOWN OF CATSKILL, GREENE COUNTY, NEW YORK

PREPARED AS PART OF THE GREENE CO. INFRASTRUCTURE INVENTORY AND DEVELOPMENT PROJECT



The Town of Catskill has 1 Privately-Owned and 7 Agricultural parcels. These parcels are located within 2 miles of the Village of Catskill-owned water/sewer systems. The existing systems have capacity for connection, although distance may be a factor for the focus parcels shown here.

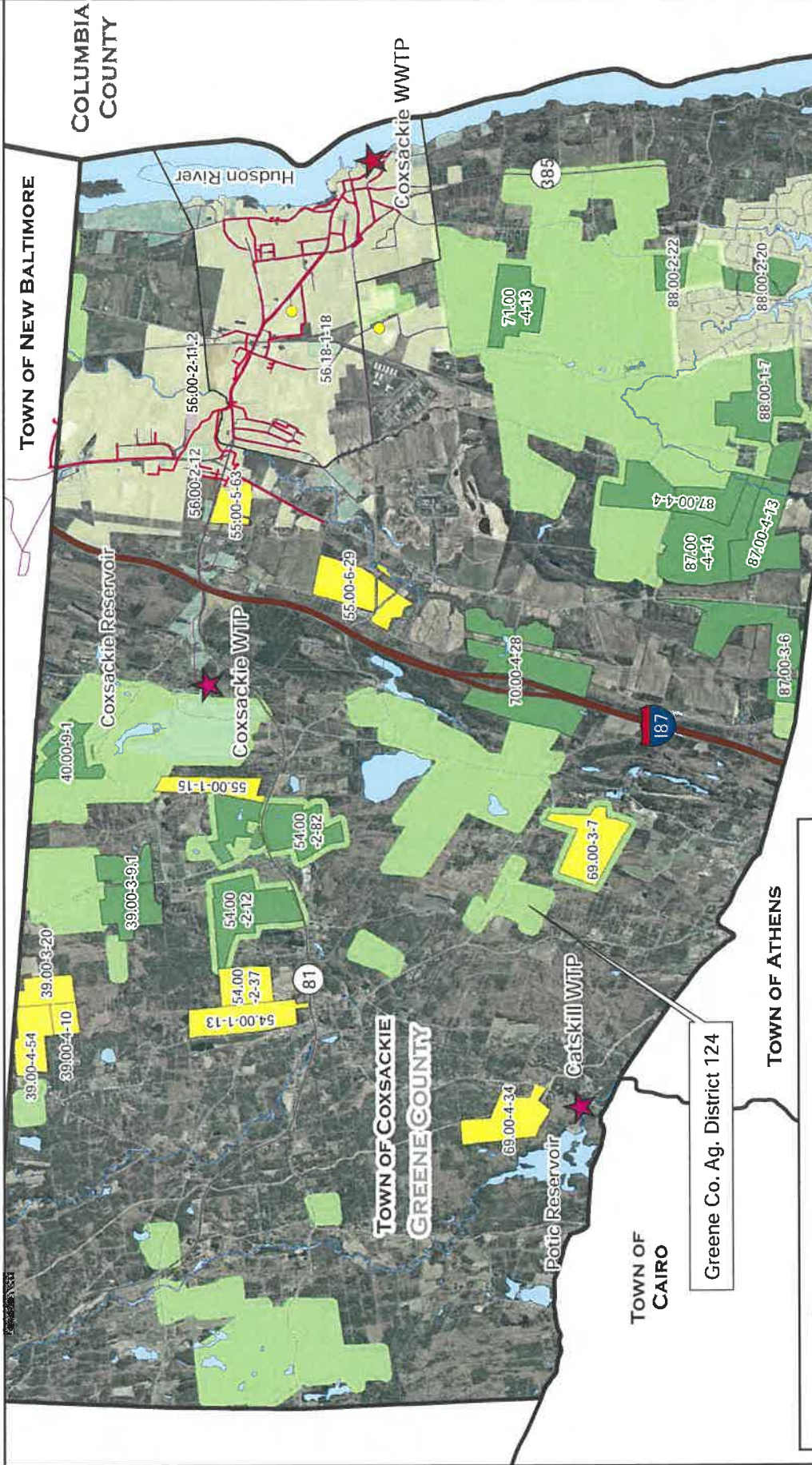


Prepared by: Delaware Engineering D.P.C.
 Date: June 2016
 Sources: Greene Co. RPS 2015 Parcels & Databases, NYS Hydrology, Municipal Water System Drawings, Municipal Sewer System Drawings, NYS Ortho Imagery 2013, Greene Co. Ag. Distr. 124



TOWN OF COXSACKIE, GREENE COUNTY, NEW YORK

PREPARED AS PART OF THE GREENE CO. INFRASTRUCTURE INVENTORY AND DEVELOPMENT PROJECT



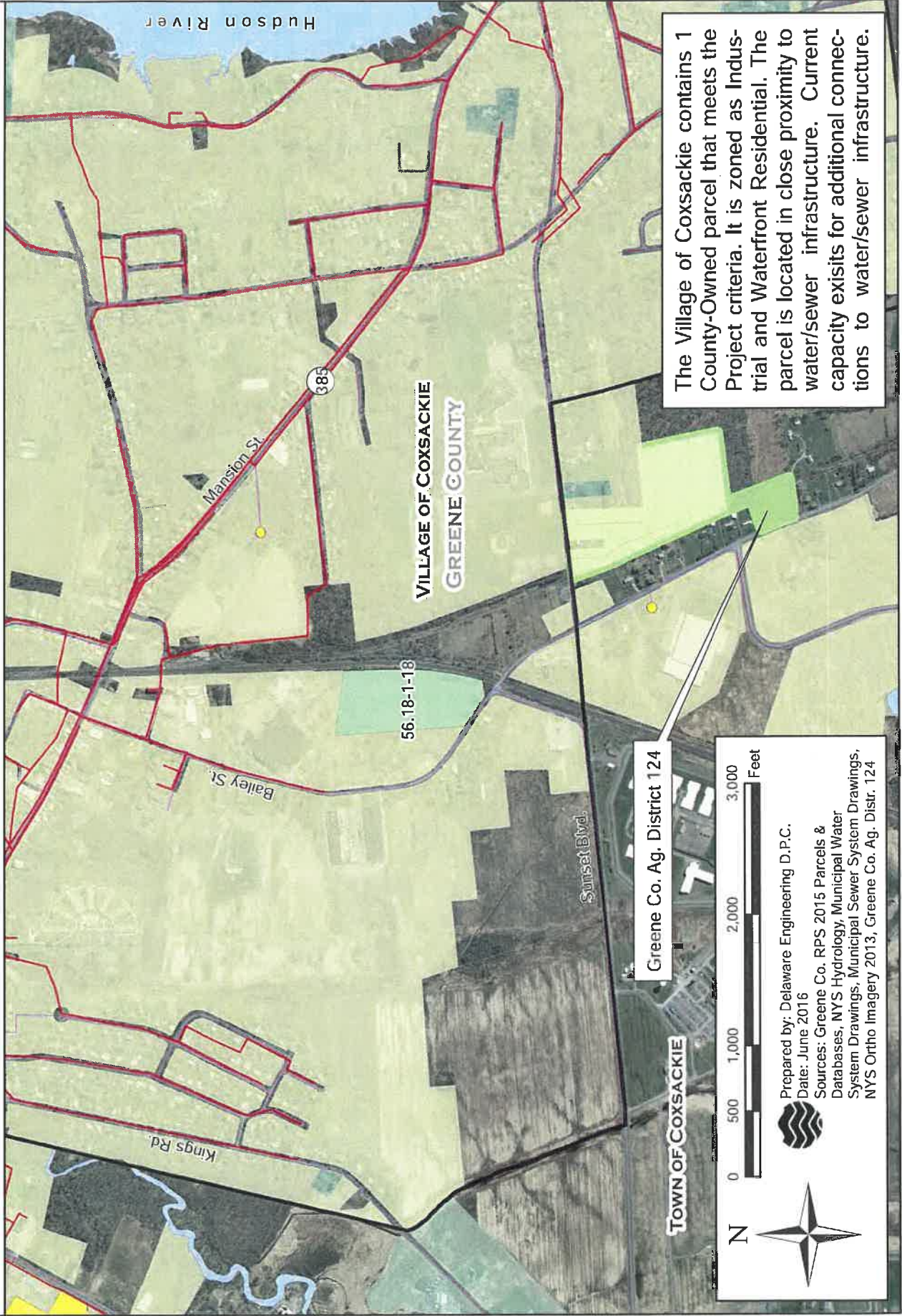
Prepared by: Delaware Engineering D.P.C.
 Date: June 2016
 Sources: Greene Co. RPS 2015 Parcels & Databases, NYS Hydrology, Municipal Water System Drawings, Municipal Sewer System Drawings, NYS Ortho Imagery 2013, Greene Co. Ag. Distr. 124

The Town of Coxsackie has 1 County-Owned Parcel, 1 MLS-Listed Parcel, 10 Private and 13 Agricultural Parcels that meet the Project criteria. Portions of the Town are connected to the Village-owned water/sewer infrastructure. Current capacity exists for additional connections to the Village's water/sewer infrastructure.



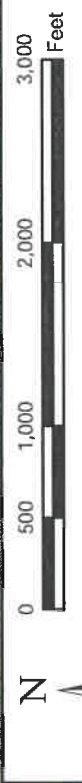
VILLAGE OF COXSACKIE, GREENE COUNTY, NEW YORK

PREPARED AS PART OF THE GREENE CO. INFRASTRUCTURE INVENTORY AND DEVELOPMENT PROJECT



The Village of Coxsackie contains 1 County-Owned parcel that meets the Project criteria. It is zoned as Industrial and Waterfront Residential. The parcel is located in close proximity to water/sewer infrastructure. Current capacity exists for additional connections to water/sewer infrastructure.

Greene Co. Ag. District 124



Prepared by: Delaware Engineering D.P.C.
 Date: June 2016
 Sources: Greene Co. RPS 2015 Parcels & Databases, NYS Hydrology, Municipal Water System Drawings, Municipal Sewer System Drawings, NYS Ortho Imagery 2013, Greene Co. Ag. Distr. 124

TOWN OF COXSACKIE

VILLAGE OF COXSACKIE
 GREENE COUNTY

385

56.18-1-13

Hudson River

Mansion St

Bailey St

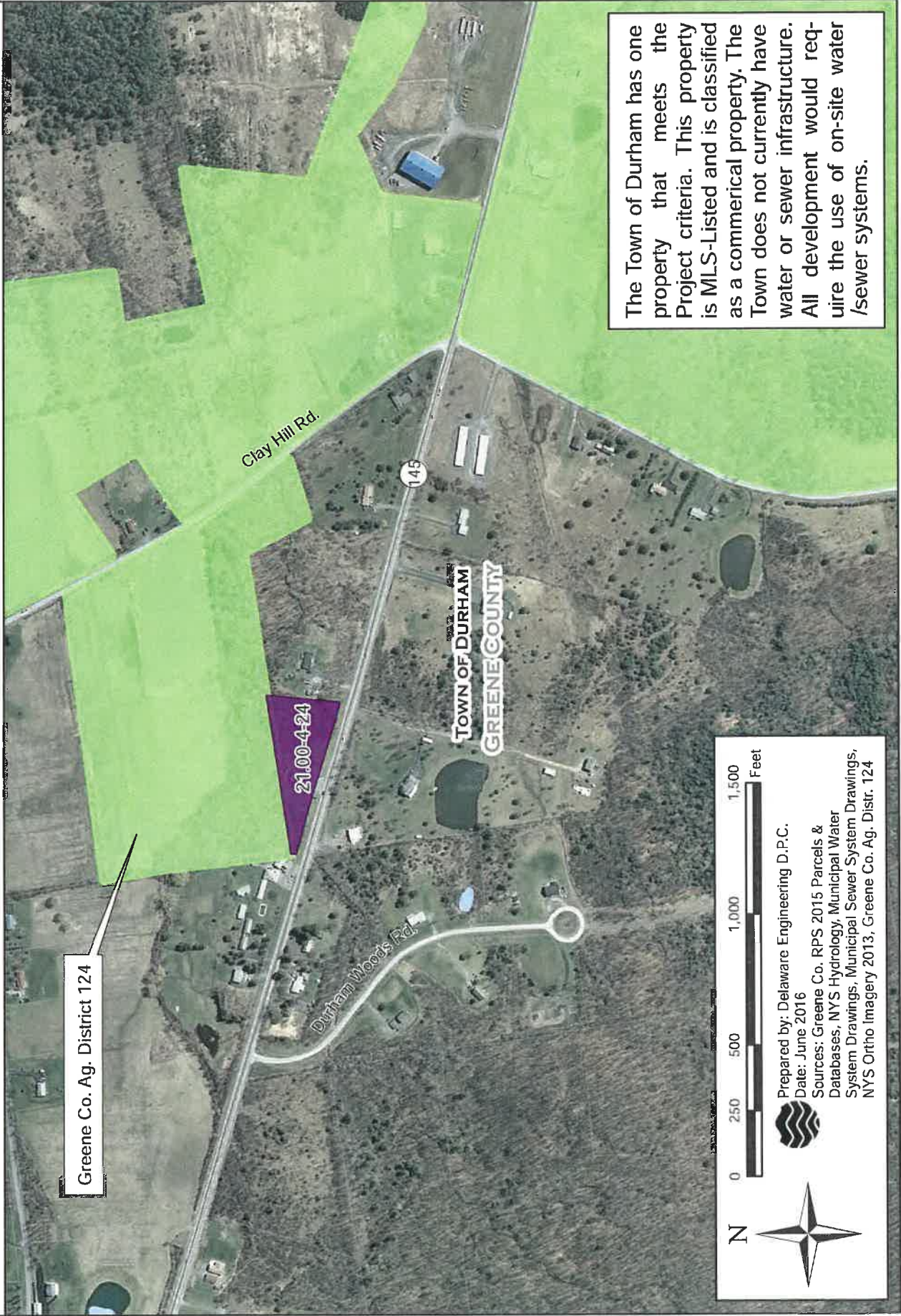
Kings Rd

Sunset Blvd.



TOWN OF DURHAM, GREENE COUNTY, NEW YORK


PREPARED AS PART OF THE GREENE CO. INFRASTRUCTURE INVENTORY AND DEVELOPMENT PROJECT



Greene Co. Ag. District 124

The Town of Durham has one property that meets the Project criteria. This property is MLS-Listed and is classified as a commercial property. The Town does not currently have water or sewer infrastructure. All development would require the use of on-site water/sewer systems.

0 250 500 1,000 1,500 Feet

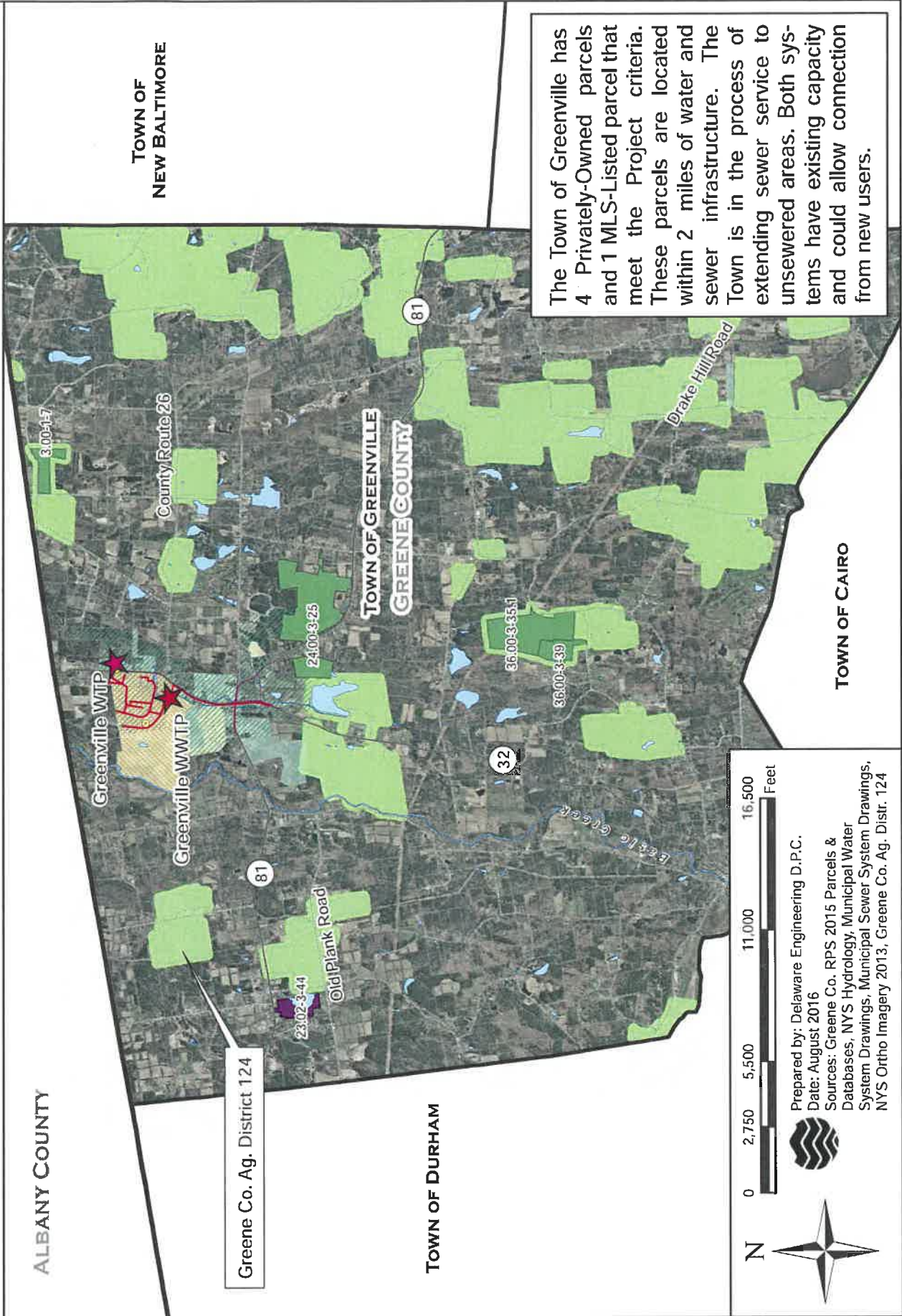


Prepared by: Delaware Engineering D.P.C.
 Date: June 2016
 Sources: Greene Co. RPS 2015 Parcels & Databases, NYS Hydrology, Municipal Water System Drawings, Municipal Sewer System Drawings, NYS Ortho Imagery 2013, Greene Co. Ag. Distr. 124



TOWN OF GREENVILLE, GREENE COUNTY, NEW YORK

PREPARED AS PART OF THE GREENE CO. INFRASTRUCTURE INVENTORY AND DEVELOPMENT PROJECT



TOWN OF
NEW BALTIMORE

ALBANY COUNTY

TOWN OF GREENVILLE
GREENE COUNTY

TOWN OF CAIRO

Greene Co. Ag. District 124

TOWN OF DURHAM

The Town of Greenville has 4 Privately-Owned parcels and 1 MLS-Listed parcel that meet the Project criteria. These parcels are located within 2 miles of water and sewer infrastructure. The Town is in the process of extending sewer service to unsewered areas. Both systems have existing capacity and could allow connection from new users.

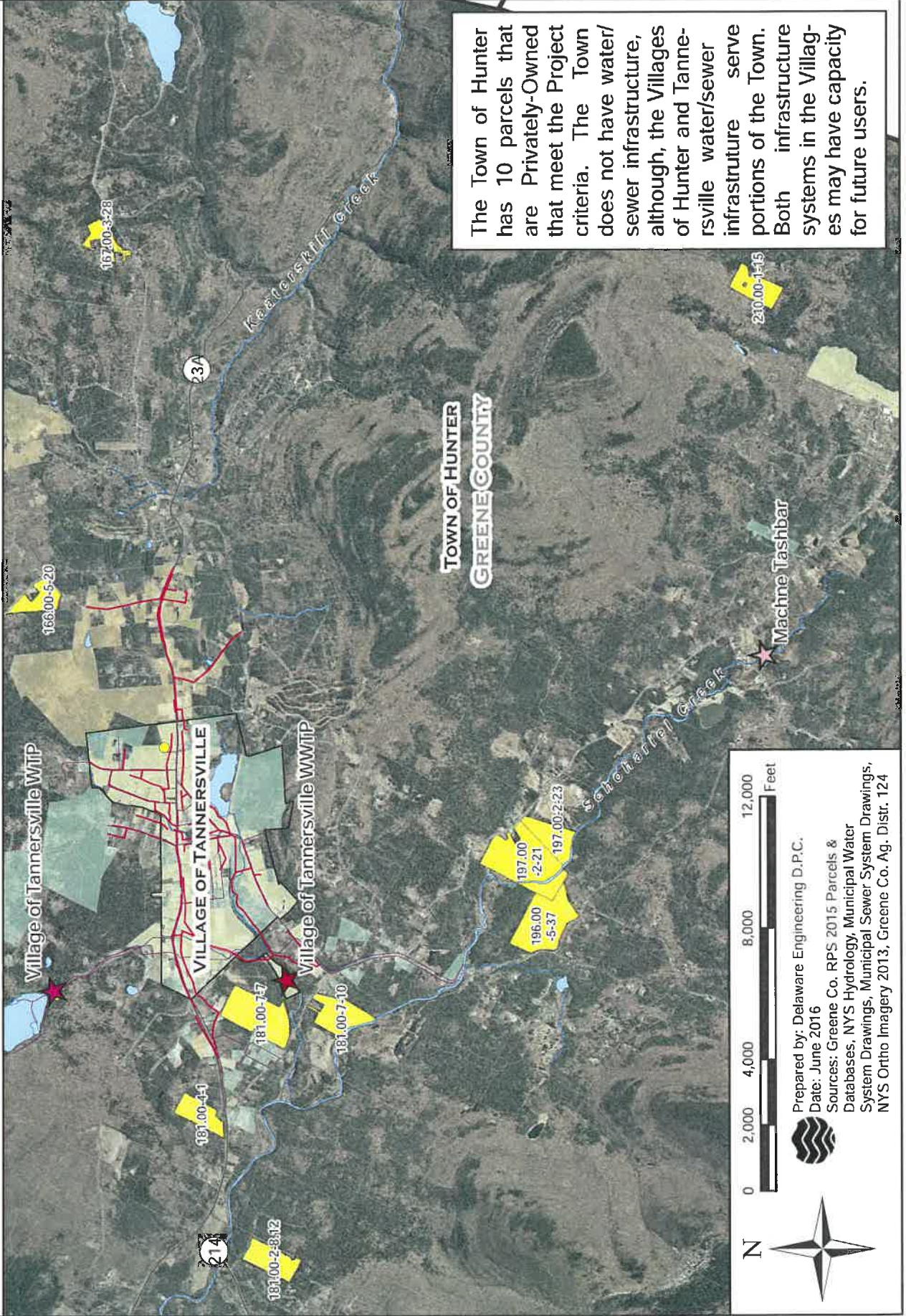


Prepared by: Delaware Engineering D.P.C.
 Date: August 2016
 Sources: Greene Co. RPS 2015 Parcels & Databases, NYS Hydrology, Municipal Water System Drawings, Municipal Sewer System Drawings, NYS Ortho Imagery 2013, Greene Co. Ag. Distr. 124



TOWN OF HUNTER, GREENE COUNTY, NEW YORK

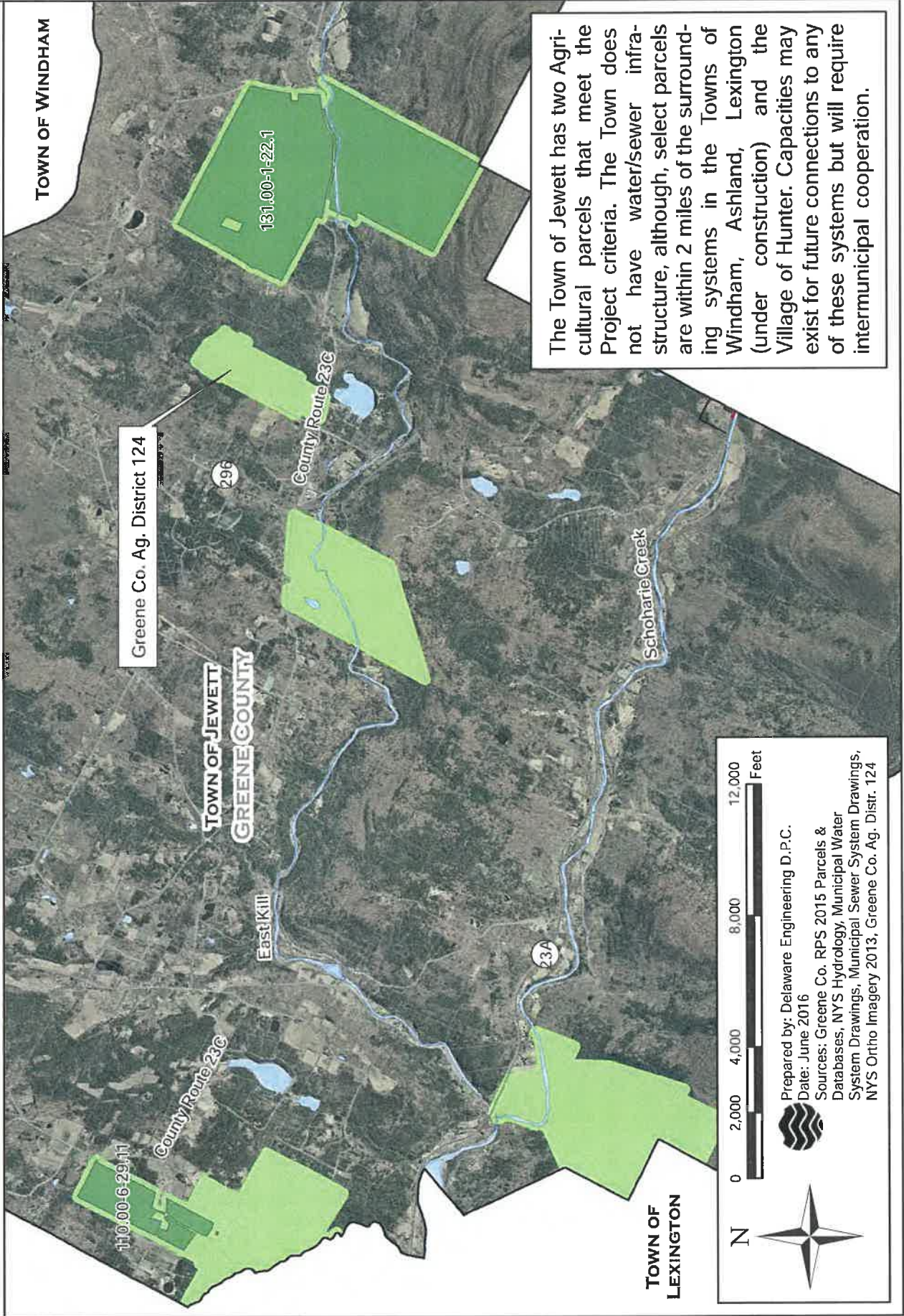
PREPARED AS PART OF THE GREENE CO. INFRASTRUCTURE INVENTORY AND DEVELOPMENT PROJECT







TOWN OF JEWETT, GREENE COUNTY, NEW YORK

PREPARED AS PART OF THE GREENE CO. INFRASTRUCTURE INVENTORY AND DEVELOPMENT PROJECT



The Town of Jewett has two Agricultural parcels that meet the Project criteria. The Town does not have water/sewer infrastructure, although, select parcels are within 2 miles of the surrounding systems in the Towns of Windham, Ashland, Lexington (under construction) and the Village of Hunter. Capacities may exist for future connections to any of these systems but will require intermunicipal cooperation.

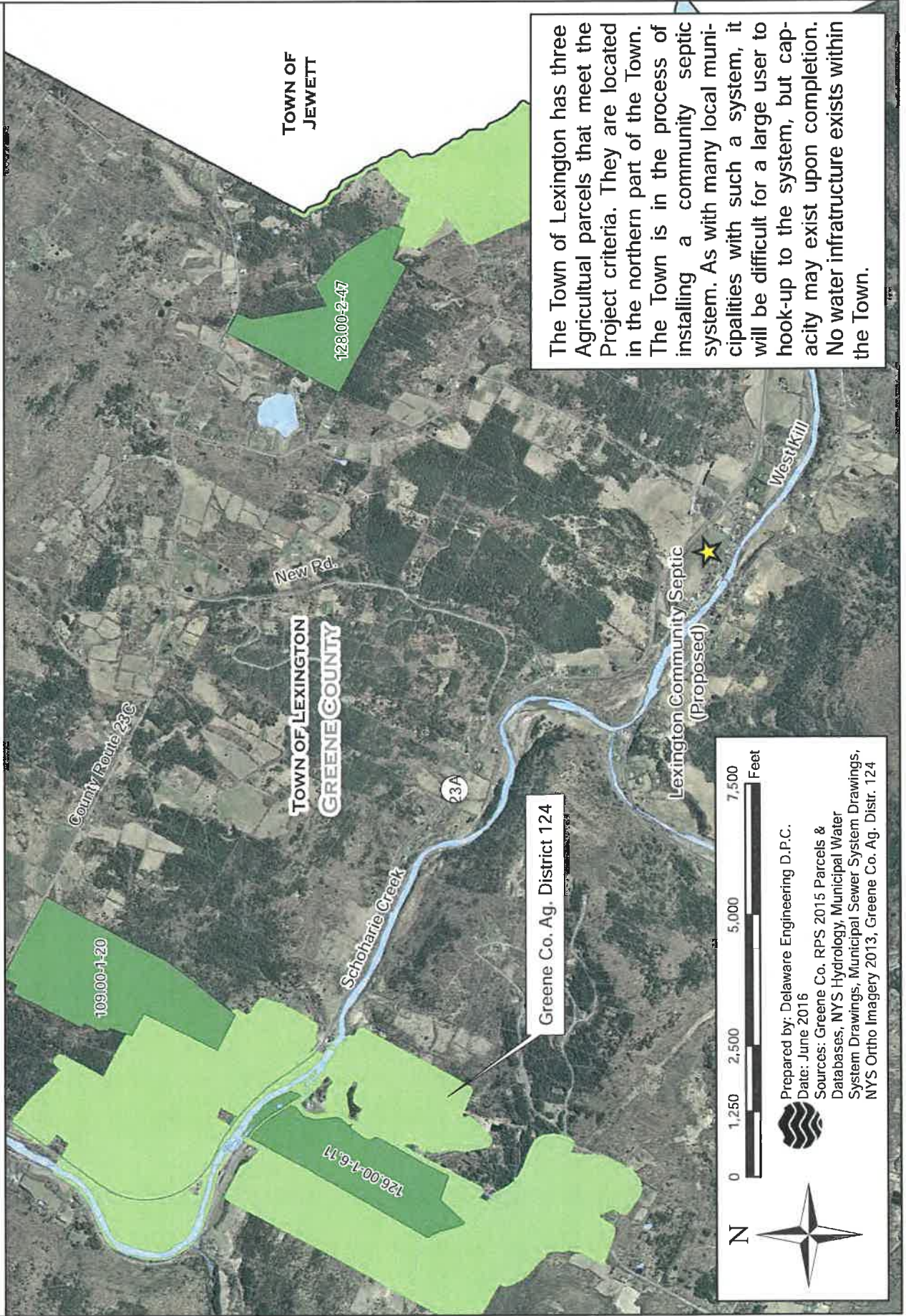



Prepared by: Delaware Engineering D.P.C.
 Date: June 2016
 Sources: Greene Co. RPS 2015 Parcels & Databases, NYS Hydrology, Municipal Water System Drawings, Municipal Sewer System Drawings, NYS Ortho Imagery 2013, Greene Co. Ag. Distr. 124





TOWN OF LEXINGTON, GREENE COUNTY, NEW YORK

PREPARED AS PART OF THE GREENE CO. INFRASTRUCTURE INVENTORY AND DEVELOPMENT PROJECT



The Town of Lexington has three Agricultural parcels that meet the Project criteria. They are located in the northern part of the Town. The Town is in the process of installing a community septic system. As with many local municipalities with such a system, it will be difficult for a large user to hook-up to the system, but capacity may exist upon completion. No water infrastructure exists within the Town.

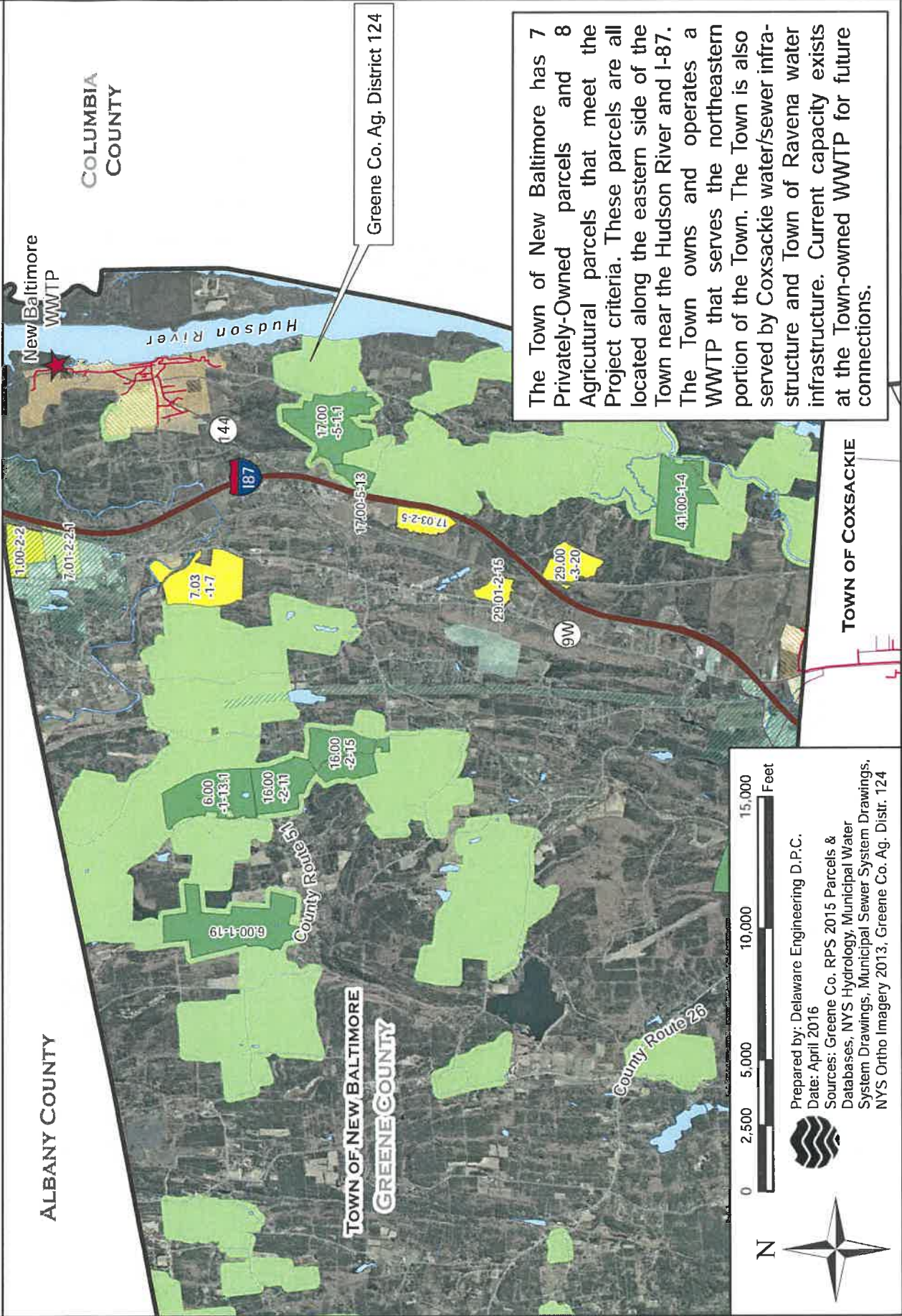



Prepared by: Delaware Engineering D.P.C.
 Date: June 2016
 Sources: Greene Co. RPS 2015 Parcels & Databases, NYS Hydrology, Municipal Water System Drawings, Municipal Sewer System Drawings, NYS Ortho Imagery 2013, Greene Co. Ag. Distr. 124



TOWN OF NEW BALTIMORE, GREENE COUNTY, NEW YORK

PREPARED AS PART OF THE GREENE CO. INFRASTRUCTURE INVENTORY AND DEVELOPMENT PROJECT



The Town of New Baltimore has 7 Privately-Owned parcels and 8 Agricultural parcels that meet the Project criteria. These parcels are all located along the eastern side of the Town near the Hudson River and I-87. The Town owns and operates a WWTP that serves the northeastern portion of the Town. The Town is also served by Coxsackie water/sewer infrastructure and Town of Ravena water infrastructure. Current capacity exists at the Town-owned WWTP for future connections.

TOWN OF COXSACKIE

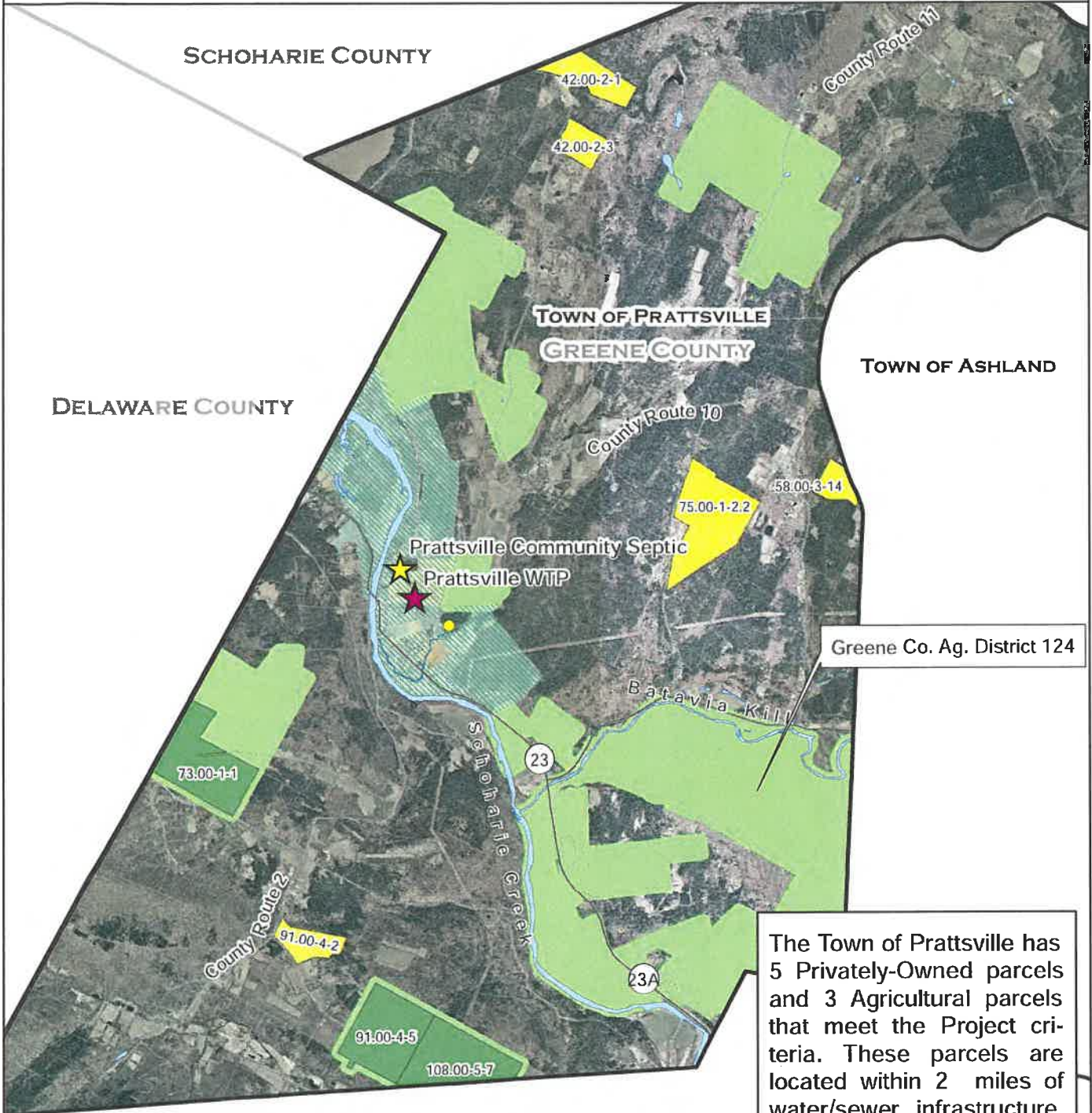


Prepared by: Delaware Engineering D.P.C.
 Date: April 2016
 Sources: Greene Co. RPS 2015 Parcels & Databases, NYS Hydrology, Municipal Water System Drawings, Municipal Sewer System Drawings, NYS Ortho Imagery 2013, Greene Co. Ag. Distr. 124



TOWN OF PRATTSVILLE, GREENE COUNTY, NEW YORK

PREPARED AS PART OF THE GREENE CO. INFRASTRUCTURE INVENTORY AND DEVELOPMENT PROJECT



The Town of Prattsville has 5 Privately-Owned parcels and 3 Agricultural parcels that meet the Project criteria. These parcels are located within 2 miles of water/sewer infrastructure, although, as with many municipalities with a community septic system, it will be difficult for a large user to hook-up to the system. The water system has existing capacity.



Prepared by: Delaware Engineering D.P.C.
 Date: June 2016
 Sources: Greene Co. RPS 2015 Parcels & Databases, NYS Hydrology, Municipal Water System Drawings, Municipal Sewer System Drawings, NYS Ortho Imagery 2013, Greene Co. Ag. Distr. 124

