

# GREENE COUNTY HIGHWAY DEPARTMENT

## & SOLID WASTE

Cauterskill Road  
Bridge over the  
Kaaterskill Creek.

RECEIVED

APR 17 2018

Greene Co Legislature

RECEIVED

APR 03 2018

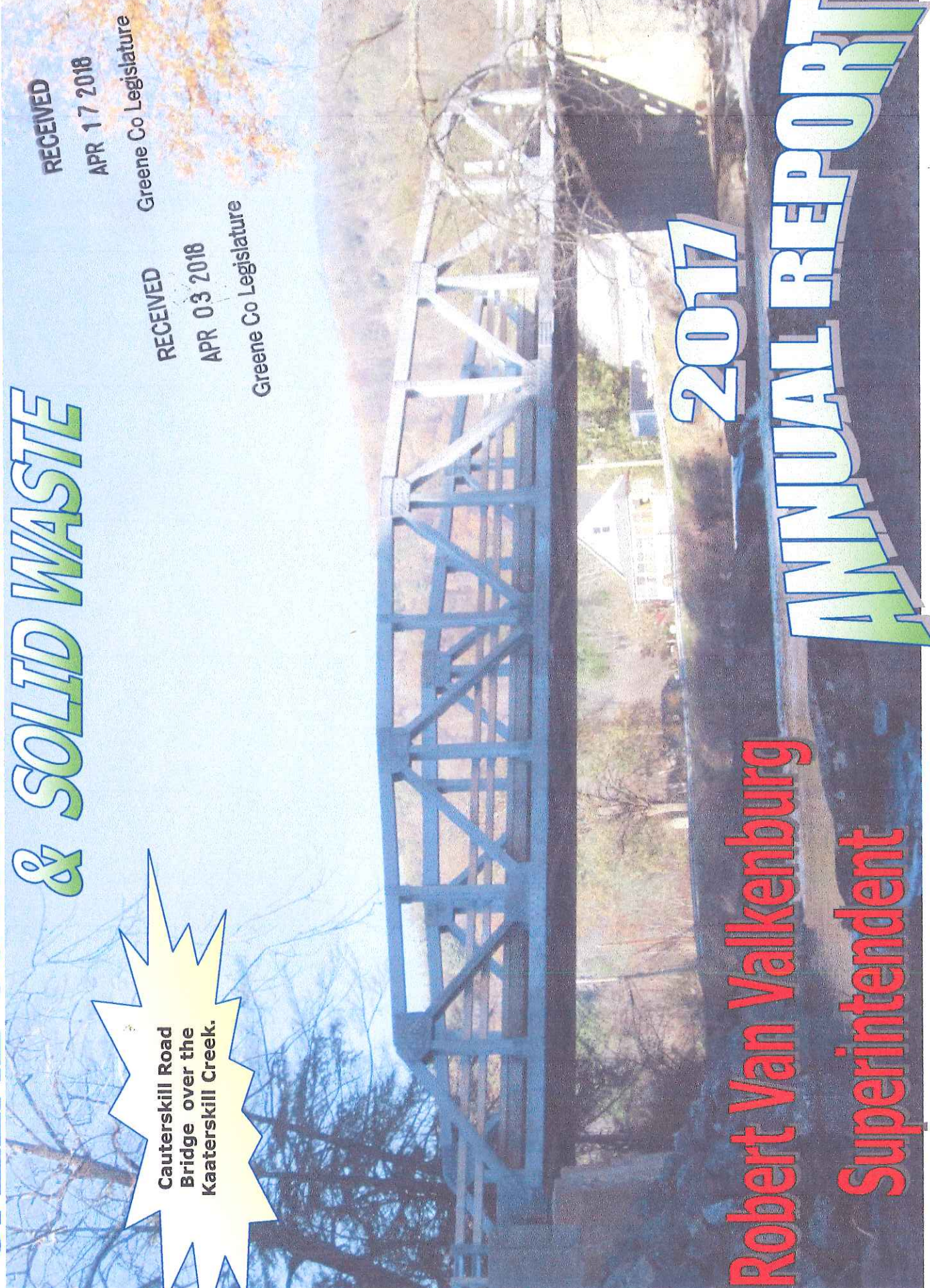
Greene Co Legislature

# 2017

## Robert Van Valkenburg

## Superintendent

# ANNUAL REPORT





# TABLE OF CONTENTS

SUMMARY SUBMITTAL LETTERS..... ROBERT VAN VALKENBURG ~ SUPERINTENDENT.

MISSION STATEMENTS

ORGANIZATIONAL FLOW CHART

HIGHWAYS IN GREENE COUNTY

PAVEMENT CONDITION SUMMARY GRAPH

PAVEMENT TREATMENT SUMMARY AND BAR GRAPH

2017 ASPHALT PAVING LIST

2017 FEDERAL & STATE AID PROJECT SUMMARYS

2017 LOCAL FUNDED PROJECT SUMMARY

GREENE COUNTY IN-HOUSE PROJECTS

BRIDGE INVENTORY BY LENGTH CHART

DEFICIENT BRIDGE STATUS HISTORY

BRIDGE STRUCTURAL FLAGS

FUNDING CHARTS

2017 VEHICLE LIST

2017 EQUIPMENT LIST

2017 SNOW / ICE REMOVAL CHART

SOLID WASTE VOLUME SUMMARY

2017 SOLID WASTE VEHICLE & EQUIPMENT LIST

MUNICIPAL SOLID WASTE CHART

2017 TRAINING AND SEMINARS

2017 PROJECT PHOTOGRAPHS

2017 HIGHWAY DEPARTMENT AND SOLID WASTE QUICK FACTS

DANIEL BURKHOLDER WINTER PHOTOGRAPHS



**Greene County  
Highway and Solid Waste  
Department**

240 West Main Street  
Post Office Box 485  
Catskill, New York 12414

**Robert J. Van Valkenburg**  
Superintendent

Greene County Legislature  
411 Main Street  
Catskill, N.Y. 12414

RE: 2017 Annual Report

Dear Legislators:

The following pages detail the work of the Highway and Solid Waste Department for 2017.

On the Highway side, we are responsible for maintenance of 262.5 centerline miles of roadway, including pavement, cross over pipes and roadside drainage ditches, shoulders, guiderail, mowing and tree removal in the right of way, as well as 135 bridges, over 15,000 signs, 184 culverts larger than 4 feet and hundreds of smaller culverts and pipes. As always, our employees have regularly gone beyond expectations to meet this immense responsibility and provide safe and efficient highway infrastructure to meet the needs of the travelling public.

Our main office and administrative staff is located in Catskill. For operations, the county is divided into four work areas, covered by facilities in Athens, Ashland, Freehold and Hunter. Our work force, including Administration, Engineering, Traffic, Road and Machinery staff totaled 57 employees with one budgeted vacancy. Training our staff for safety and productivity was a priority and many topics were covered both on site and through conferences and seminars as detailed in this report. Several key employees were nearing retirement in 2017. Replacing the experience and knowledge that is lost will be an important priority for the department and Greene County.

In 2017 we were again able to take full advantage of funding from the state funded Consolidated Highway Improvement (CHIPS), Extreme Weather Recovery and PAVE NY programs. Taken together, these reimbursement programs fund a significant portion of our paving program and increased from a total of \$1,852,938 in 2014 (prior to PAVE NY) to \$2,333,039 in 2017. This drove a corresponding increase in related county budget appropriations. However, revenues derived from these programs covered 81% of transportation improvements completed in 2017 with county taxes directly funding only 19%. Of course, any reduction in these state programs would have a significant impact on our paving program and our budget. This year we were able to overlay 19.50 miles of road with asphalt paving. This is a decrease of 1.1 miles of total miles treated or 5.3% less than 2016 primarily because money allocated to chip sealing, a much less costly surface treatment was redirected to asphalt paving in 2017. Hot mix paving this year required over 30,375 tons of asphalt compared to 27,000 tons in 2017. An increased budget appropriation for pavement marking allowed us to increase centerline marking by 11.58 miles or 5.6% and edge line marking by 91.54 miles or 51.54%.



.com

Before a road can be paved, a significant amount of work is required, particularly drainage improvements, pipe replacements, tree trimming and then shoulder work after the paving is done. Realistically, asphalt pavements have approximately a 10 year life cycle before additional treatment is necessary. Therefore our goal is to address 10% of our system, or 26.2 miles each year. This is not possible with the current level of funding.

Given the high cost of construction and maintenance of major transportation infrastructure, the ability to access, utilize and properly administer Federal and State aid is critically important to our department. In 2017, we had a total of eight Federally and State Aided Projects in various phases from design, through construction and project closeout. Generally, these projects are funded by an 80% Federal share, 15% State share and 5% local Share. In two of the projects we are currently administering, the local share is being funded by other municipalities, a Town and a Village. The total value of the active phases of these projects exceeded 5.27 million dollars in 2017.

Under the County funded portion of our program two bridges and three large concrete culverts were replaced. Design work was advanced for three additional bridge replacements and two large culvert replacement projects at a current cost near \$576,502. We also worked with Buildings and Grounds and two of our prequalified contractors to achieve significant savings on the construction of the new Parking Lot F near the Crossroads Brewery. Over the years our strong bridge program has paid significant dividends. In 2017 the number of county bridges considered deficient was reduced from 21 to 16, or approximately 12% of the total. The term "deficient" does not mean that the bridges in this classification are unsafe, rather that the bridge is not functioning as it was originally designed. Of course, with 135 bridges in our system, this is an ongoing process. Even as structures are replaced or rehabilitated, others continue to deteriorate and become deficient.

During the winter months, snow and ice control dominates our operations. This is a highly visible and measurable service with high public expectations and is a significant focus of the department. Our costs are largely driven by the weather and like the winter season, spread over two budget years. Conditions were more seasonable in 2017 and unremarkable until March 14<sup>th</sup> when Winter Storm Stella impacted the area with a heavy snowfall in excess of 3 feet in most parts of the county. While we were able to manage the effects of the massive storm, it did result in a Federal disaster declaration. Preliminary costs for overtime, equipment, sand and salt used during the eligible period in excess of \$157,320 have been submitted to FEMA in anticipation of at least partial reimbursement. Our work force and supervisors efficiently handled these operations, working long hours, often in difficult conditions to provide the level of services expected by the travelling public and emergency responders. In 2017 we began a shift toward increased use of straight salt on appropriate plow runs. While the material cost for using straight salt is higher, that expense is offset on appropriate plow runs by reduced costs for labor and equipment and resulted in noticeably better road conditions. In August, we increased our salt requirement by 43%, to a total of 5,260 tons, switching five plow runs in the valley to straight salt and

increasing the percentage of salt added to abrasives on the mountain top. We continue to review the effectiveness of our salt and abrasives usage and further adjustments will be made next year.

After labor, our trucks and machinery are the most important and expensive asset required to accomplish our work. While our mechanics have done outstanding work on repairs and overhauls that extend the service life of our heavier vehicles, the deteriorating reliability and increasing age of the vehicles in our fleet, especially during snow and ice control or other emergency operations, had become a major concern. In 2017 we continued implementation of our Capital Improvement Plan. We were able to purchase and place into service two wheel loaders, one tractor with mowing equipment, two replacement mowers for existing tractors, one tandem truck with snow and ice equipment and four, 19,000 lb four wheel drive trucks with snow and ice equipment. Additionally, we were able to purchase two full size, four wheel drive trucks with snow and ice equipment in good condition from local municipalities as well as a new vacuum sweeper truck funded through grants from the Catskill Watershed Corporation and Soil and Water. This significant investment of \$1,026,123.20 has allowed us to address our most pressing and immediate concerns and greatly improved our snow and ice control capabilities. The addition of several new, electronically controlled sand/salt spreaders has enhanced our ability to convert from the use of abrasives to straight salt where appropriate. With the support of the Legislature, we are planning to continue to address our capital needs in 2018.

On the Solid Waste side, our staff continued to successfully meet the challenges of providing solid waste management and recycling services to our residents. The department again disposed of a record volume of waste. 59,770.96 tons of Municipal Solid Waste (MSW) and Construction and Demolition Debris (C&D) was processed through the transfer station system in 2017, compared to 58,038.32 in 2016, an increase of 1732.64 tons or approximately 3%. This compares with volumes of 54,822.37 tons in 2015, 51,407 tons in 2014, 50,122 tons in 2013, 50,014 tons in 2012 and 38,579 tons in 2011. This work was completed with a workforce of 17 full time employees the same number that we had in 2000, when we processed a total of 10,358 tons of MSW and C&D.

In 2017 we were able to begin implementation of our capital improvement program through purchase of a used Ottawa yard tractor, 10 used open top roll off containers of various sizes and a used Volvo road tractor, all in good condition and at a substantial savings over the cost of new equipment. Work began on the development of software to allow electronic processing of all transactions and eliminate paperwork now done manually at the stations. Implementation is scheduled for the second quarter of 2018. We also began work on a Request for Proposals for engineering work necessary to reconfigure the Transfer Stations at Hunter and Coxsackie to allow direct loading and shipment of waste in large transfer trailers from each site and provided information to Cornerstone Engineering for Ulster County's study on the feasibility of a multi-county solid waste authority. Community Service

workers continue to assist with cleanup and recyclable sorting at the stations and are provided by Social Services and the Probation Department. Inmates from the County Jail also assisted with cleanup at Catskill on a regular basis. A three year collective bargaining agreement was in place with Teamsters Local 294 for Solid Waste employees and will run through December 2019.

In June, we held our eleventh annual Household Hazardous Waste Collection event at the Highway Department facility in Athens, again utilizing the services of MXI Environmental for sorting, packaging, recycling and disposal of the waste. As in the past the public participation was very strong. Our costs are based on unit prices contracted for each of the various types of hazardous materials collected and are set under terms of a three year contract. The cost for this year's event was \$41,472 as compared to \$32,699.60 in 2016, reflecting even greater participation due to increased advertising and outreach efforts. The collection event is eligible for a 50% reimbursement under the NYS Household Hazardous Waste Assistance program. Our staff was assisted by the Highway and the Sheriff's Departments with each providing personnel and equipment for the event. The Emergency Services Department also provided assistance by notifying the public about the event.

2017 was the first year of a four year agreement with Seneca Meadows Inc. for solid waste transportation and disposal. This agreement also gives us the option of separating C&D for disposal at a lower cost landfill, providing a considerable savings. We also operated under a Disposal Agreement with County Waste Ulster LLC, to accept the MSW and C&D they collect locally, stabilizing the volume coming into our system. County Waste is the largest private hauler operating within the County and utilizes the Catskill Transfer Station for disposal along with several other high volume haulers.

Eleven different materials are accepted, processed and sent to markets for recycling. The department processed a total of 1675.67 tons of recyclables in 2017 compared to 1506.92 tons of recyclables in 2016, an increase of 168.75 tons or approximately 11%. Department staff are always reviewing markets with our recyclables brokers to obtain the best pricing for the products. Electronics are collected year round at all Transfer Stations at no charge to residents and transported to Catskill. They are then sorted, packed and loaded into trailers provided by the market. We collected 67.7 tons, equal to 5.5 tractor trailer loads in 2017.

The Needle Smart Initiative continues to be an important program and helps protect our staff by removing sharps from the solid waste stream. We continued our partnership with the Public Health Department on the Needle Smart Initiative, servicing eight kiosks located throughout the County where residents can drop off used sharps. In 2017 we collected and transported 2,395 pounds of used sharps which was an increase of 322 pounds over the amount collected in 2016. We continued to accept waste collected locally by Greenville and Halcott and provided recycling services for the towns of Cairo, Halcott, Greenville, Durham and New Baltimore. We also were able to assist



## *Mission Statement*

**THE GREENE COUNTY HIGHWAY DEPARTMENT EXISTS TO EFFECTIVELY MAINTAIN AND IMPROVE THE HIGHWAY AND BRIDGE INFRASTRUCTURE OF GREENE COUNTY, FOR THE EFFICIENT AND SAFE USE OF THE TRAVELING PUBLIC.**



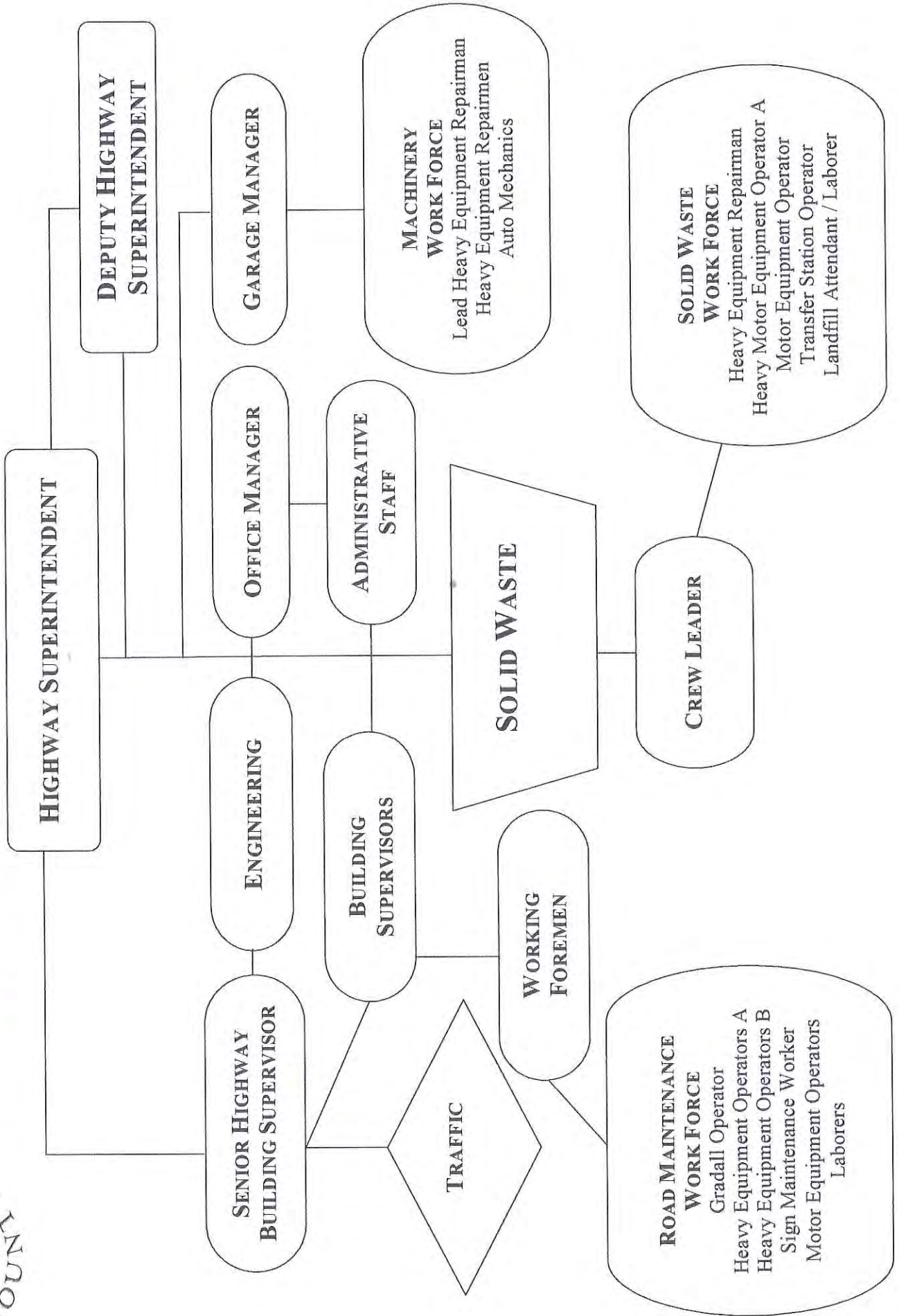
## *Mission Statement*

**THE MISSION OF THE GREENE COUNTY SOLID WASTE DEPARTMENT IS TO ACCEPT AND EFFICIENTLY DISPOSE OF THE MUNICIPAL SOLID WASTE STREAM, INCLUDING CONSTRUCTION AND DEMOLITION DEBRIS, AND TO PROCESS AND MARKET THE SOURCE SEPARATED RECYCLABLES GENERATED BY THE COUNTY'S RESIDENTS AND BUSINESSES.**





# Organizational Chart





# Highways in Greene County

Mileage of each class of highway in Greene County is as follows:

Class 1 – State Highways.....	220.88 miles
Class 2 – Controlled Access Highways .....	9.77 miles
Class 3 – State Thruways .....	23.83 miles
Class 4 – County Roads.....	262.52 miles
County Roads within Villages.....	3.70 miles
Class 5- Town Roads.....	663.61 miles

	County Roads in Towns	County Roads in Villages	County Roads	Town Highway Total
Ashland	16.59	--	16.59	17.99
Athens	11.97	2.75	14.72	31.67
Cairo	30.21	--	30.09	91.34
Catskill	18.68	--	18.56	83.39
Coxsackie	17.73	0.56	18.29	49.42
Durham	22.67	--	22.67	80.02
Greenville	23.59	--	23.59	62.51
Halcott	7.16	--	7.16	16.34
Hunter	14.01	0.39	14.40	38.97
Jewett	23.88	--	23.88	39.07
Lexington	16.79	--	16.79	34.97
New Baltimore	23.83	--	23.83	63.18
Prattsville	12.62	--	12.62	18.91
Windham	19.07	--	19.07	35.83
	258.82	3.70	262.52	663.61

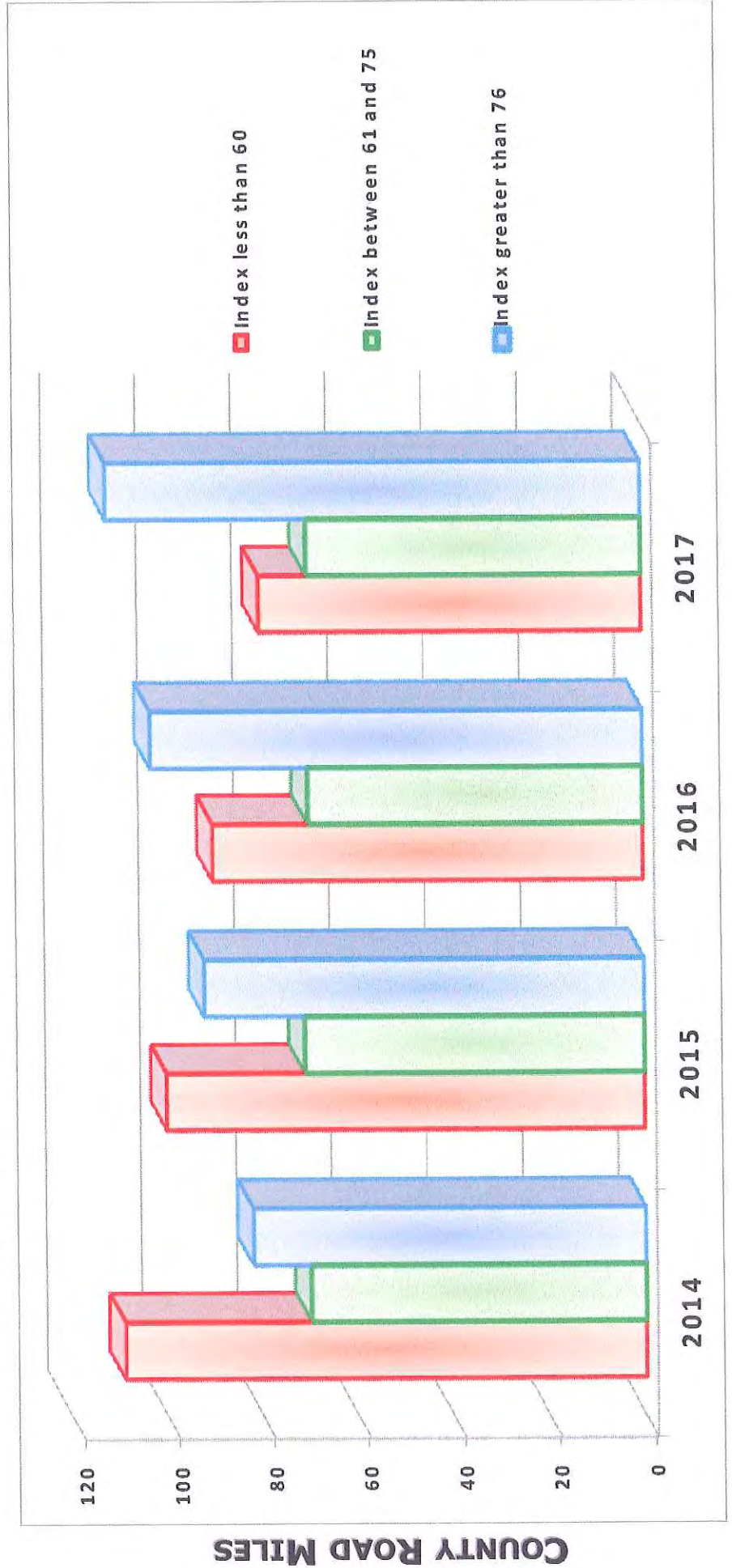


# Pavement Condition Summary

Pavement Condition Index, or also known as PCI, is the Value assigned to each road Section that indicates the road condition based on a 0 to 94 value system. Zero being the worst and 94 being the Best.

Total County Road Miles = 262.52 Miles  
 Total Number of Pavement Management Sections = 306 Sections  
 Average Length of each Section = 0.89 Miles

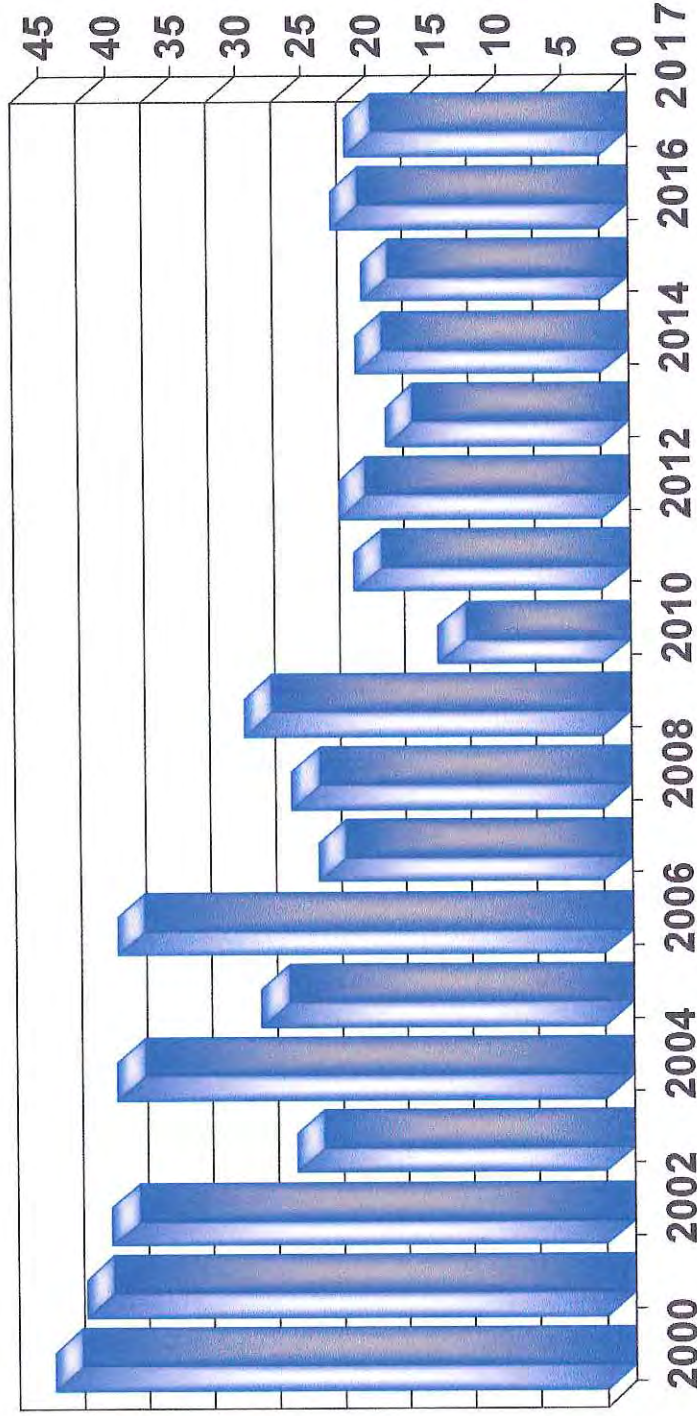
## THE NUMBER OF COUNTY ROAD MILES VERSES CALENDAR YEAR



# Pavement Treatment Summary

Treatment	2011	2012	2013	2014	2015	2016	2017
Asphalt Paving	10.77 mi.	11.60 mi.	12.58 mi.	11.14 mi.	13.19 mi.	17.77 mi.	19.50 mi.
Motor Paving	0.00 mi.	0.00 mi.	0.00 mi.	0.00 mi.	1.10 mi.	2.84 mi.	0.00 mi.
Chip Seal	8.18 mi.	8.52 mi.	3.93 mi.	7.62 mi.	5.11 mi.	2.84 mi.	0.00 mi.
Nova Chipping	0.00 mi.	0.00 mi.	0.00 mi.	0.00 mi.	0.00 mi.	0.00 mi.	0.00 mi.
Hot-In-Place Rec.	0.00 mi.	2.58 mi.	2.10 mi.	0.00 mi.	0.00 mi.	0.00 mi.	0.00 mi.

**Total Miles**    **18.97 mi.**    **20.12 mi.**    **16.51 mi.**    **18.76 mi.**    **18.3 mi.**    **20.61 mi.**    **19.50 mi.**



**Total Number of Treated Miles Verses Calendar Year**



# GREENE COUNTY HIGHWAY DEPARTMENT



## 2017 Quick Quote: Paving Contract

Road Name	Town	From	To	Road Width (feet)	Length (miles)	US Tons Estimated	US Tons Actual	Over / Under Tons
CR. 02	Prattsville	State Route 23	Barney Moore Road	21.0	2.15	3,311.00	3,492.39	181.39
CR. 06	Lexington	Shoemaker Road	Auffarth / Evergreen Road	21.0	1.81	2,787.40	2,968.26	180.86
CR. 10	Prattsville	Dent Road	Stanley Slater Road	21.0	1.91	2,941.40	3,025.29	83.89
CR. 20	Cairo	State Route 23	State Route 23	21.0	2.36	3,634.40	3,632.98	-1.42
CR. 22	Durham	State Route 145	Bridge over the Catskill Creek	21.0	1.22	1,878.80	1,793.87	-84.93
CR. 23C	Lexington (Add-In Rd)	State Route 23A	Top of Hill (Maben Airport)	21.0	1.00	1,540.00	1,639.37	99.37
CR. 23C	Jewett	Natty Bumpo's Path	County Road 40	21.0	2.35	3,619.00	3,367.45	-251.55
CR. 24	Cairo	County Road 24 - Culvert (125-ft. x 25-ft.) Located 4,100-ft. East of CR 31		25.0	0.05	80.67	80.00	-0.67
CR. 31	Cairo	County Road 24	County Road 20	21.0	2.19	3,372.60	3,415.97	43.37
CR. 31	Cairo	Binder Course along reconstructed area of County Road 31 (sta 0+0.00 to sta 4+50)		24.0	0.08	202.75	111.05	-91.70
CR. 37	Greenville	County Road 26	County Road 38	21.0	1.46	2,248.40	2,207.47	-40.93
CR. 51	New Baltimore	County Road 26	Jennings Road	21.0	1.55	2,387.00	2,157.03	-229.97
CR. 53	Athens	County Road 28	County Road 53	21.0	1.54	2,371.60	2,386.89	15.29
<b>Grand Total</b>					<b>19.67</b>	<b>30,375.02</b>		<b>-336.83</b>

# 2017 FEDERAL & STATE AID PROJECT SUMMARY

<u>BIN / PIN</u>	<u>PROJECT DESCRIPTION</u>	<u>FUND APPROPRIATION</u>	<u>CONTRACT COST</u>
	<b><u>BRIDGE PRESERVATION PROJECT BUNDLED</u></b>	Project 78 (2013 & On Going)	
3-30288-0	Brooksburch Road (CR 65) Over the Batavia Kill		\$304,327.14 (Actual Cost)
3-30310-0	Deans Mill Road Bridge (CR 27) Over the Catskill Creek		\$40,965.96 (Actual Cost)
3-30356-0	Old State Route 23 (CR23B) Over the Catskill Creek		\$2,250.00 (Actual Cost)
PIN 1756.47 (Federal Aid)	Engineering - CDM Smith ROW Incidentals - CDM Smith ROW Acquisitions - (2015) Construction - Bette & Cringe, LLC. Construction Inspection - Barton & Loguidice, D,P,C.		\$1,780,658.43 (Contract Amount) \$230,500.00 (Contract Amount)



**Leeds Bridge  
(Cr. 23B)**

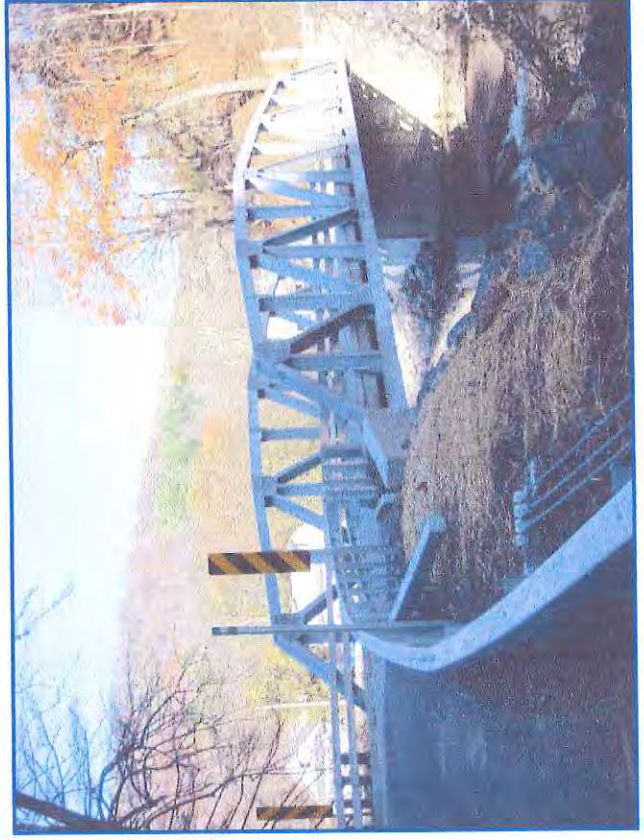


# 2017 FEDERAL & STATE AID PROJECT SUMMARY

<u>BIN / PIN</u>	<u>PROJECT DESCRIPTION</u>	<u>FUND APPROPRIATION</u>	<u>CONTRACT COST</u>
<b>PIN 1124.41</b> (Federal Aid)	<b>Palenville and Mansion Street Sidewalk Project</b> Engineering - Creighton Manning Engineering, LLP Construction Inspection - Creighton Manning Engineering, LLP Construction - HMA Contracting Corp.	<b>Project 89</b> (2016 & On Going) \$100,500.00 (\$10,000 <i>State Drainage</i> ) \$564,019.90 (\$89,908.59 <i>State Drainage</i> )	\$93,855.00
<b>BIN 3-30296-0</b> <b>PIN 1760.21</b> (Federal Aid)	<b>CR 06 Over the West Kill (3rd.) Bridge Replacement</b> Engineering - Clark Patterson & Lee ROW Incidentals - Clark Patterson & Lee	<b>Project 90</b> (2016 & On Going)	\$261,500.00 \$26,000.00
<b>PIN 1760.21</b> (Federal Aid)	<b>CR 12 (South Street) Bicycle Lane Project</b> Engineering - Barton & Loguidice, P.C. ROW Incidentals - Barton & Loguidice, P.C	<b>Project 91</b> (2016 & On Going)	\$244,932.00 \$49,136.00
<b>PIN 1759.71</b> (Federal Aid)	<b>Black Bridge Project / Catskill Creek</b> Engineering - Creighton Manning Engineering, LLP Construction Inspection - Clark Patterson & Lee Construction - Harrison and Burrowes Bridge Constructors, Inc.	<b>Project 85</b> (2014 & On Going)	\$335,622.06 (Actual Cost) \$224,000.00 \$2,382,874.78 (Actual Cost)

# 2017 FEDERAL & STATE AID PROJECT SUMMARY

<u>BIN / PIN</u>	<u>PROJECT DESCRIPTION</u>	<u>FUND APPROPRIATION</u>	<u>CONTRACT COST</u>
BIN 3-30328-0 PIN 1760.24 (Federal Aid)	CR 23B Over the Shingle Kill Engineering - Creighton Manning Engineering, LLP ROW Incidentals - Creighton Manning Engineering, LLP	Project 94 (2017 & On Going)	\$135,000.00 \$16,960.00
PIN 1760.23 (Federal Aid)	CR 83 Culvert and Pedestrian Bridge Engineering - CDM Smith ROW Incidentals - CDM Smith	Project 93 (2017 & On Going)	\$193,719.00 \$14,962.00
BIN 3-20068-0 PIN 1757.13 (Federal Aid)	Cauterskill Road Bridge / Kaaterskill Creek Engineering - Barton & Loguidice, P.C. ROW Incidentals - Barton & Loguidice, P.C. Construction Inspection - Clark Patterson Lee Construction - New Century, LLC.	Project 86 (2014 & On Going)	\$232,875.00 (Actual Cost) \$1,366.68 (Actual Cost) \$196,000.00 \$864,400.00



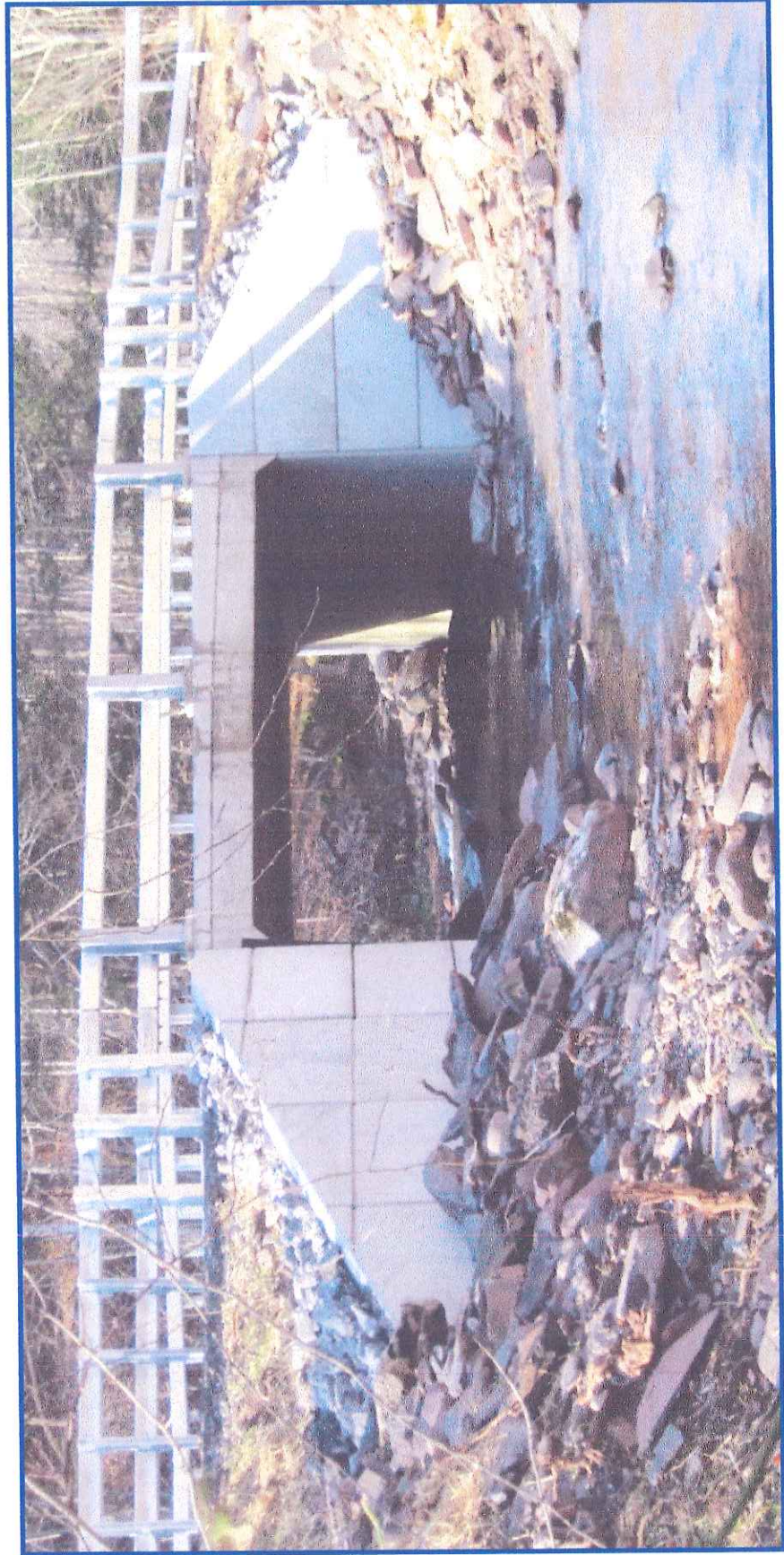
*Cauterskill Road Bridge*



# 2017 LOCAL FUNDED PROJECT SUMMARY

<u>BIN / CIN</u>	<u>PROJECT DESCRIPTION</u>	<u>FUND APPROPRIATION</u>	<u>CONTRACT COST</u>
CIN 02-02-266 LEX	County Road 02 Culvert / Little West kill Engineering Design & Construction Inspection Services – Creighton Manning Engineering, LLP Construction - A. Colarusso & Son, Inc.	D5112.2160 MISCELLANEOUS BRIDGES	\$304,950.00 (Total Cost)

(Note: \$100,000 Stream Management Plan Implementation Project Funding through Soil & Water )



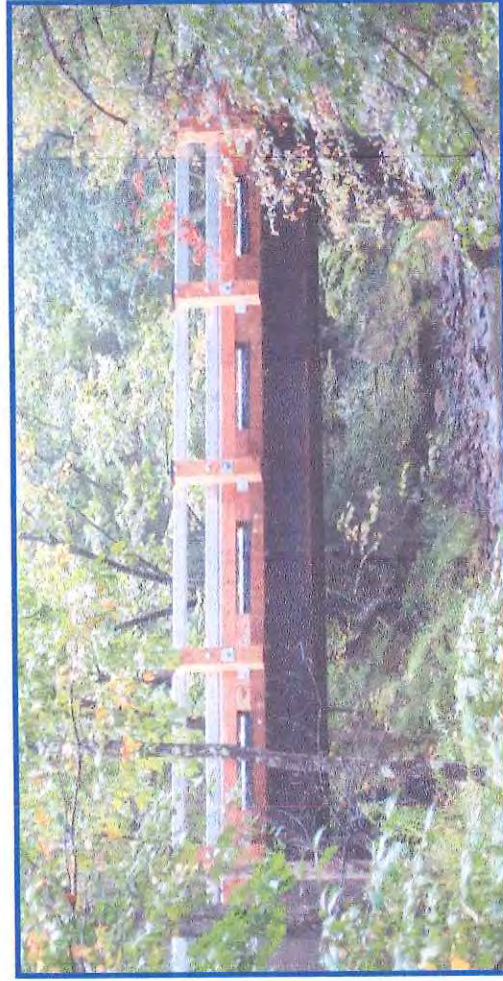
*County Road 02 - Culvert In the Town of Lexington*

# 2017 LOCAL FUNDED PROJECT SUMMARY

<u>BIN / CIN</u>	<u>PROJECT DESCRIPTION</u>	<u>FUND APPROPRIATION</u>	<u>CONTRACT COST</u>
BIN 3-20110	Sunset Road Bridge / Kaaterskill Creek Engineering Design & Construction Inspection Services – Creighton Manning Engineering, LLP	D5112.2160 MISCELLANEOUS BRIDGES	\$13,500.00
3-20089-0	Golden Hill Road Bridge / Thorp Creek & CR. 41 Culvert Replacement Engineering Design & Construction Inspection Services – Clark Patterson Lee Design Professionals Construction (Golden Hill Road Bridge) - HVB Construction, Inc. Construction (County Road 41 Culvert) - HVB Construction, Inc.	D5112.2160 MISCELLANEOUS BRIDGES	\$30,390.00 \$47,100.00 \$103,900.00



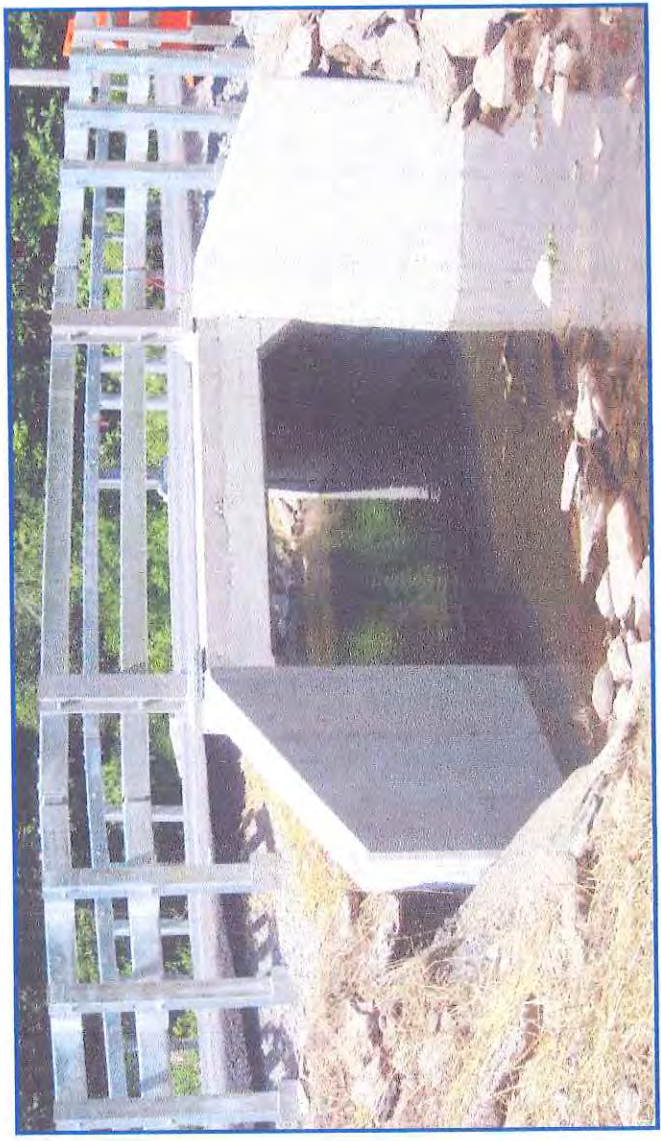
*CR. 41 Culvert - In the Town of Cairo*



*Golden Hill Road Bridge - In the Town of Durham*

# 2017 LOCAL FUNDED PROJECT SUMMARY

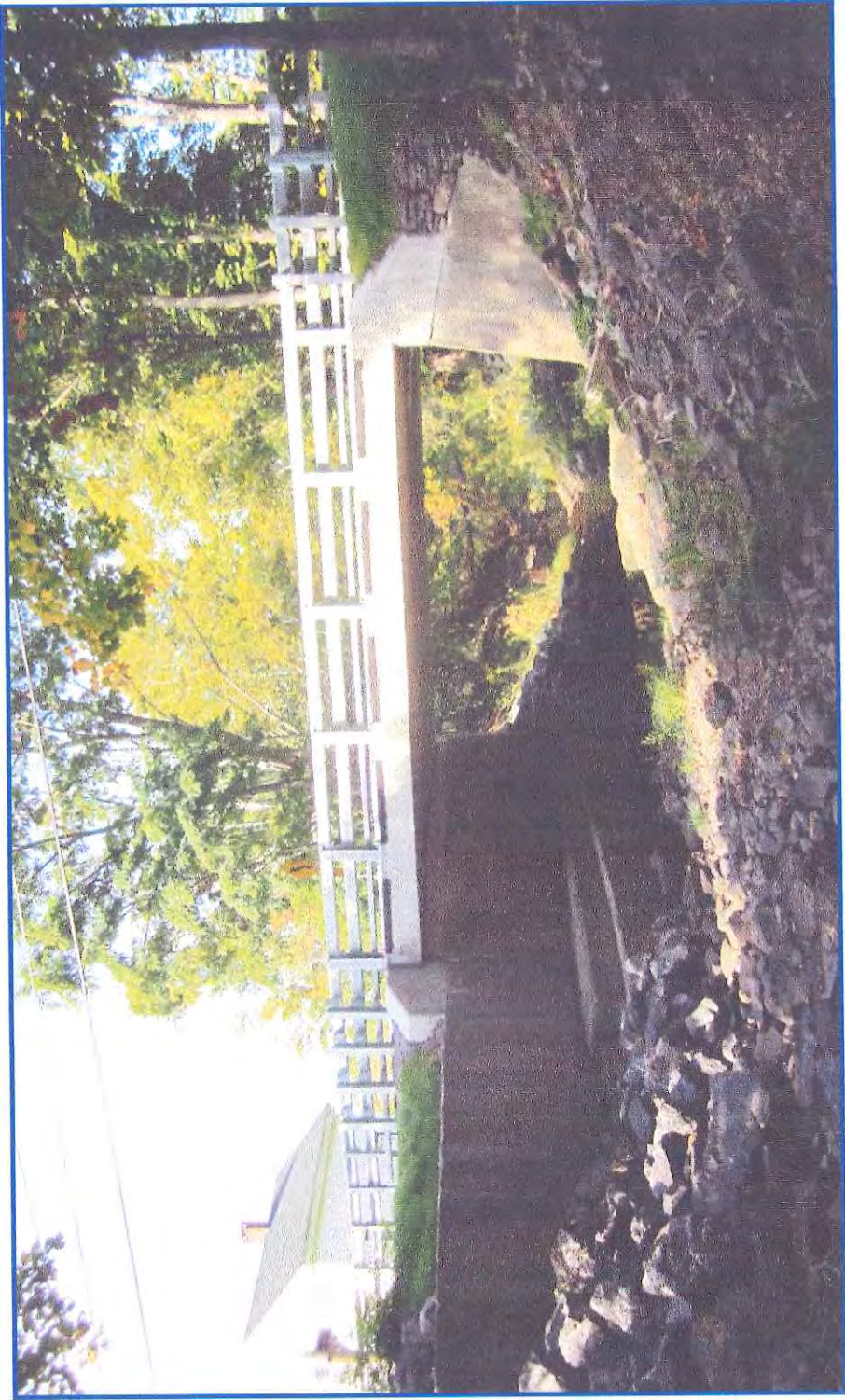
<u>BIN / CIN</u>	<u>PROJECT DESCRIPTION</u>	<u>FUND APPROPRIATION</u>	<u>CONTRACT COST</u>
3-20092-0	<b>Hervey Street / Thorpe Creek</b> Engineering Design & Construction Inspection Services -- Barton and Loguidice, P.C.	D5112.2160 MISCELLANEOUS BRIDGES	\$18,940.00
3-20092-0	<b>South Road Bridge / Glen Brook</b> Engineering Design & Construction Inspection Services -- Barton and Loguidice, P.C.	D5112.2160 MISCELLANEOUS BRIDGES	\$24,580.00
	<b>Poplock Parking Lot Project</b> Construction - HVB Construction Inc.	A1620 2600 BUILDING & GROUNDS	\$39,000.00
CIN 01-02-007 HAL	<b>West Settlement Road (CR. 01) / West Settlement Creek</b> Engineering Design & Construction Inspection Services -- Creighton Manning Engineering, LLP Construction - A. Colarusso & Son, Inc.	D5112.2160 MISCELLANEOUS BRIDGES	\$13,000.00 \$63,532.00



*CR. 01 Culvert  
In the Town of Halcott*

# 2017 LOCAL FUNDED PROJECT SUMMARY

<u>BIN / CIN</u>	<u>PROJECT DESCRIPTION</u>	<u>FUND APPROPRIATION</u>	<u>CONTRACT COST</u>
3-30284-0	Mitchell Hollow Road (CR 21) / Mad Brook Engineering Design & Construction Inspection Services – Barton & Loguidice, P.C. Construction - Wm. J. Keller Construction Corp.	D5112.2160 MISCELLANEOUS BRIDGES	\$19,825.00 \$58,000.00



# Greene County In-House

## REPAIR PROJECTS

### *Town & County Bridge and Rail*

D5112.2160 (misc. bridges)

County Road 41A Jerome Ave. - Shotcrete Repairs

**\$17,550.00**

## APPLICATION OF SILANE PENETRATING SEALER (DECK SEALING)

### *Town & County Bridge and Rail*

D5112.2160 (misc. bridges)

Poultney Bridge & Summit Ave. Bridge

**\$8,930.00**

Sunside Road Bridge (Blackthorn Bridge)

**\$14,499.50**

262.52 Miles of Roadway Maintained.

General Maintenance Including: Culvert Replacement, Ditching, Tree removal & Trimming, Mowing, Removal of Debris.

Maintained 135 Bridges within the NYS Computer Regulated "FLAG" System

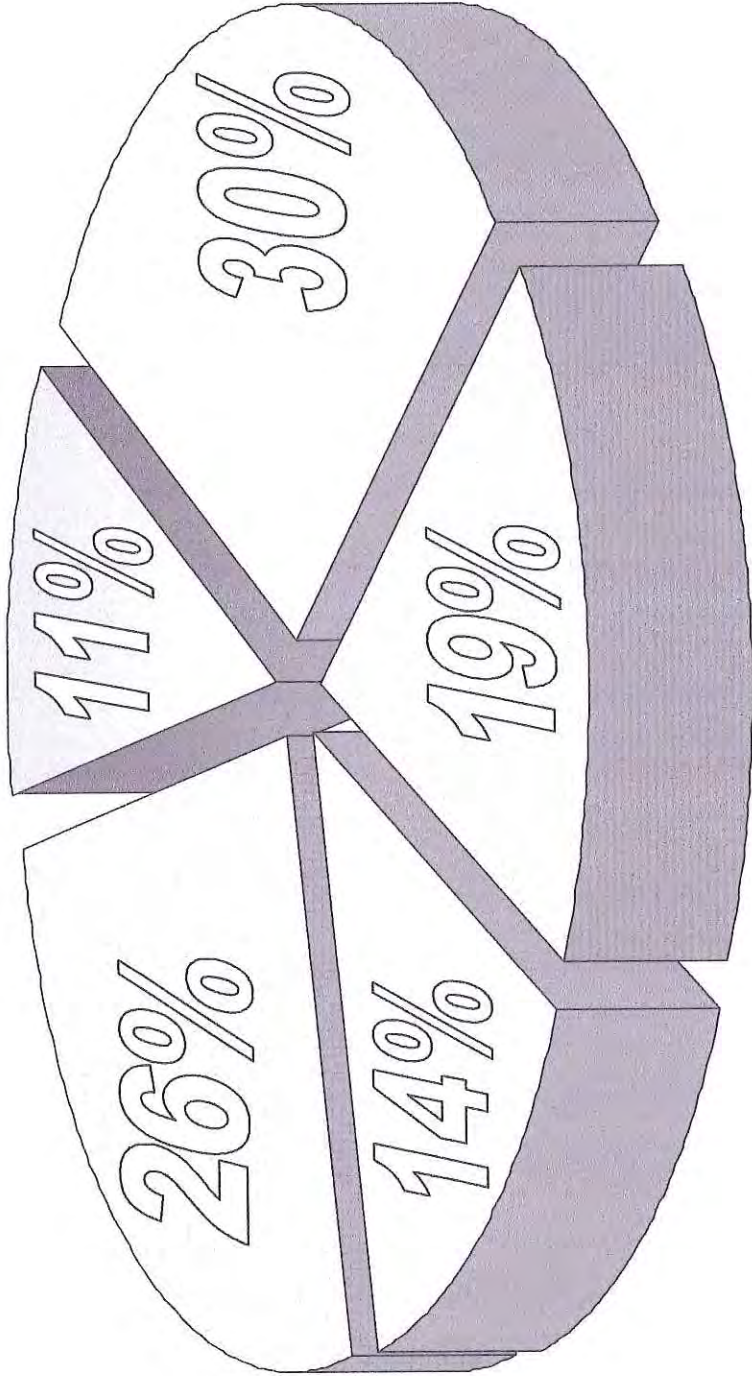
Administered the "Petro-Vend" Automated Fueling Management System.

The Sign Department is responsible for over 15,000 signs along with 223.83 miles of centerline striping, and 422.06 miles of edge line striping. With budgetary constraints, 218.12 miles of centerline and 269.14 miles of edge line was striped.



# GREENE COUNTY

## 135 BRIDGES



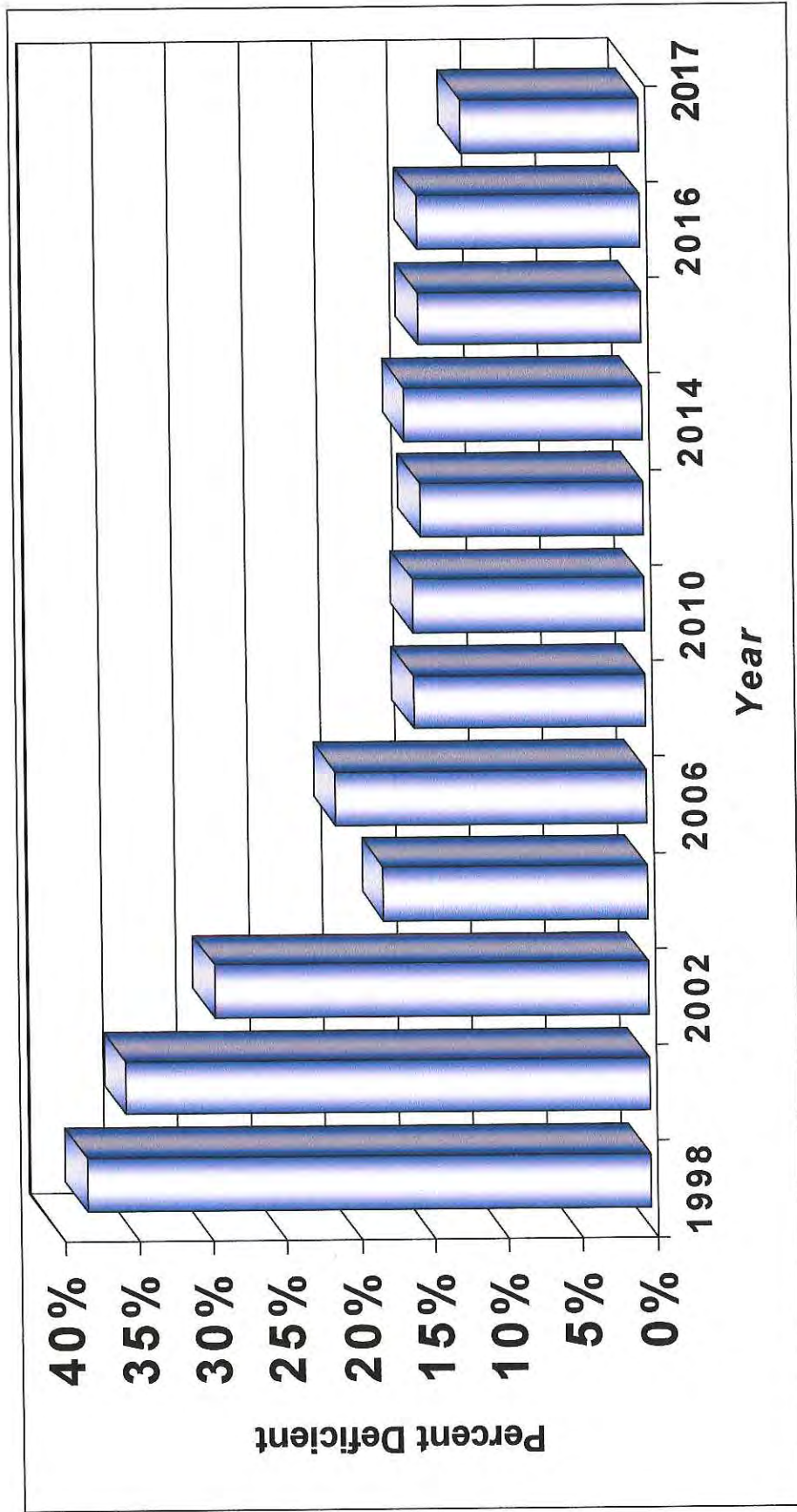
- Between 20 & 30 ft. = 11%
- Between 31 & 45 ft. = 30%
- Between 46 & 60 ft. = 19%
- Between 61 & 75 ft. = 14%
- Greater Than 75 ft. = 26%

2017 Bridge Inventory by Length



# Deficient Bridge Status History

## From 1998 to 2017



A Bridge with an Overall General Recommendation of less than 5.0 is considered NOT to be performing as it was designed and is, therefore, considered "DEFICIENT". The term "DEFICIENT" does NOT mean, however that a Bridge is Unsafe. Currently there are 16 County owned bridges that are rated less than 5.0, down from 21 bridges in 2016.



# Bridge Structural Flags

New York State Department of Transportation administers an annual or bi-annual inspection of all publicly owned bridges located in Greene County. The Engineering Division receives from New York State Department of Transportation the inspection reports and any "Flag" information resulting from those bridge inspections. Red Structural Flags require immediate response in the form of a site inspection, by the County's General Consultant Engineer, and subsequent repair plan formulated and submitted to New York State Department of Transportation within 24 hours or 6 weeks from the initial notification, depending on the designated urgency of the flagged condition.

Yellow Structural Flags are reviewed and a proposed plan to effect repairs is formulated before the flagged condition worsens, resulting in a red flag.

The Engineering Division monitors all structural and safety flags received from New York State Department of Transportation and then updates the files in our Bridge Management database. In 2017, there were a total of 11 Structural Flags, 9 Yellow, 1 Safety, and 1 Red.

The table below indicates the number of Red and Yellow Flags received over the past thirteen years:

<u>YEAR</u>	<u>RED</u>	<u>YELLOW</u>
2017	1	9
2016	5	11
2015	3	18
2014	6	14
2013	10	19
2012	12	11
2011	5	23
2010	1	21
2009	10	23
2008	4	10
2007	2	8
2006	1	6
2005	4	9



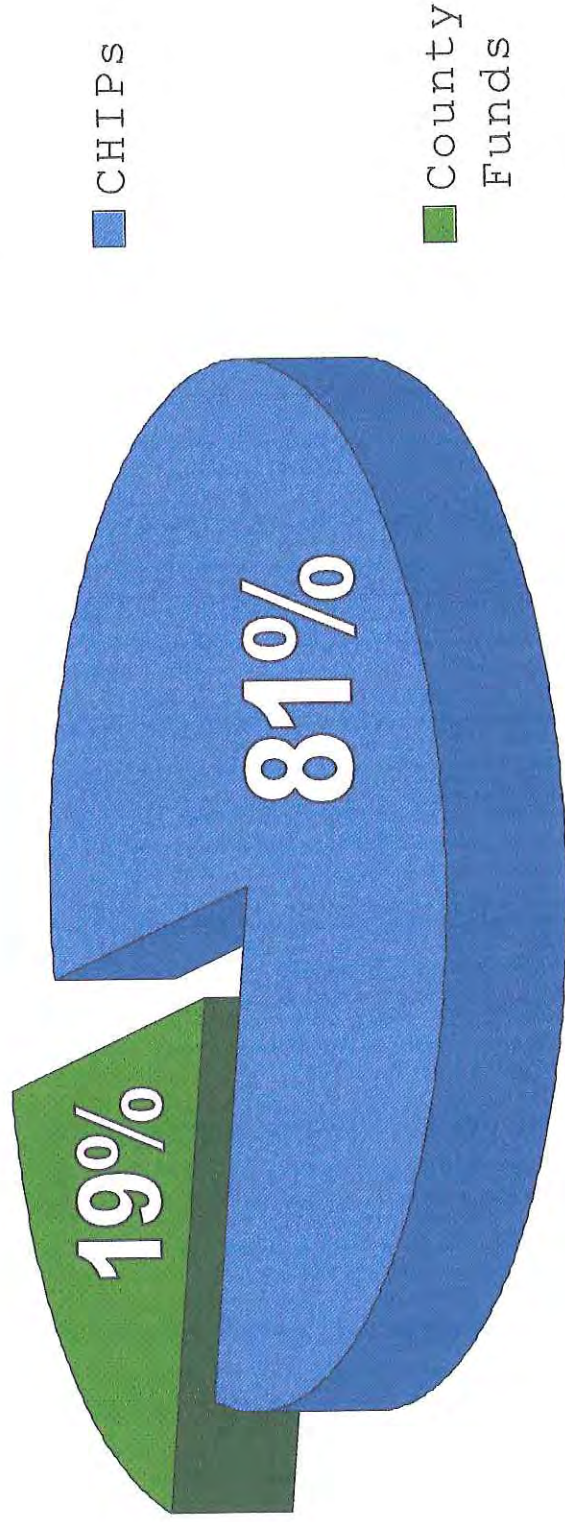
# Where the Money Comes From

## Greene County Funds

VS

## Consolidated Local Street and Highway Improvement Program - "CHIPS"

State legislators enacted the "Extreme Winter Recovery Appropriations," (EWR) which we have received since 2013. This reimbursement to local governments is to help offset repair costs to roads and bridges damaged during the winter season. Like CHIPS, it is a reimbursement grant for eligible costs of local highway and bridge projects and the money is allocated via the CHIPS formula.

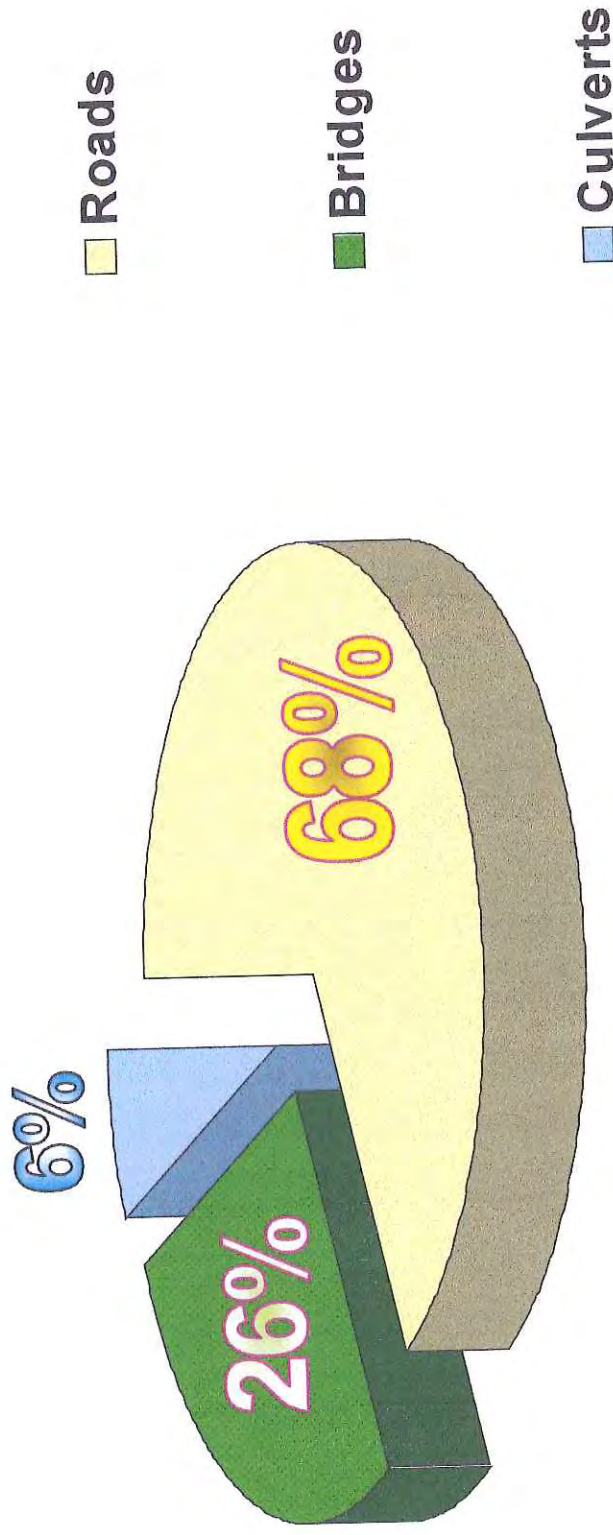


OF THE \$2,897,000.00 BUDGETED IN 2017 FOR TRANSPORTATION IMPROVEMENTS, \$2,333,038.56 OR 81% WAS FUNDED THROUGH THE CHIPS, EWR, AND PAVENY PROGRAMS. ONLY \$563,961.14 WAS FUNDED BY COUNTY TAXPAYERS

**2017 Annual Total: \$2,897,000.00**

# Where the Money Goes

**Roads (262.5 Miles) \* Bridges (135) \* Culverts (150)**

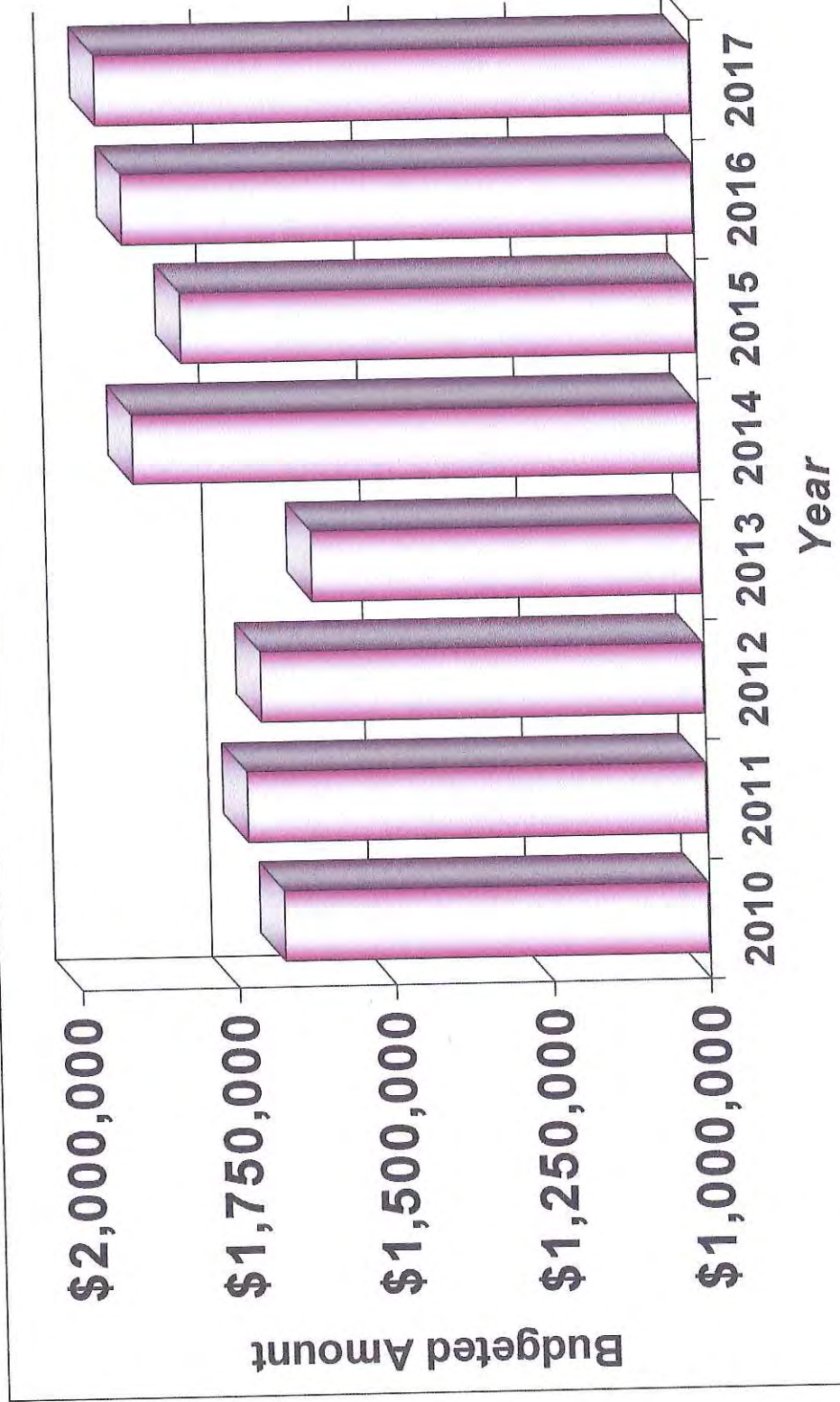


**2017 Annual Budget: \$2,897,000.00**



# Annual Road Maintenance Money

## From 2010 to 2017

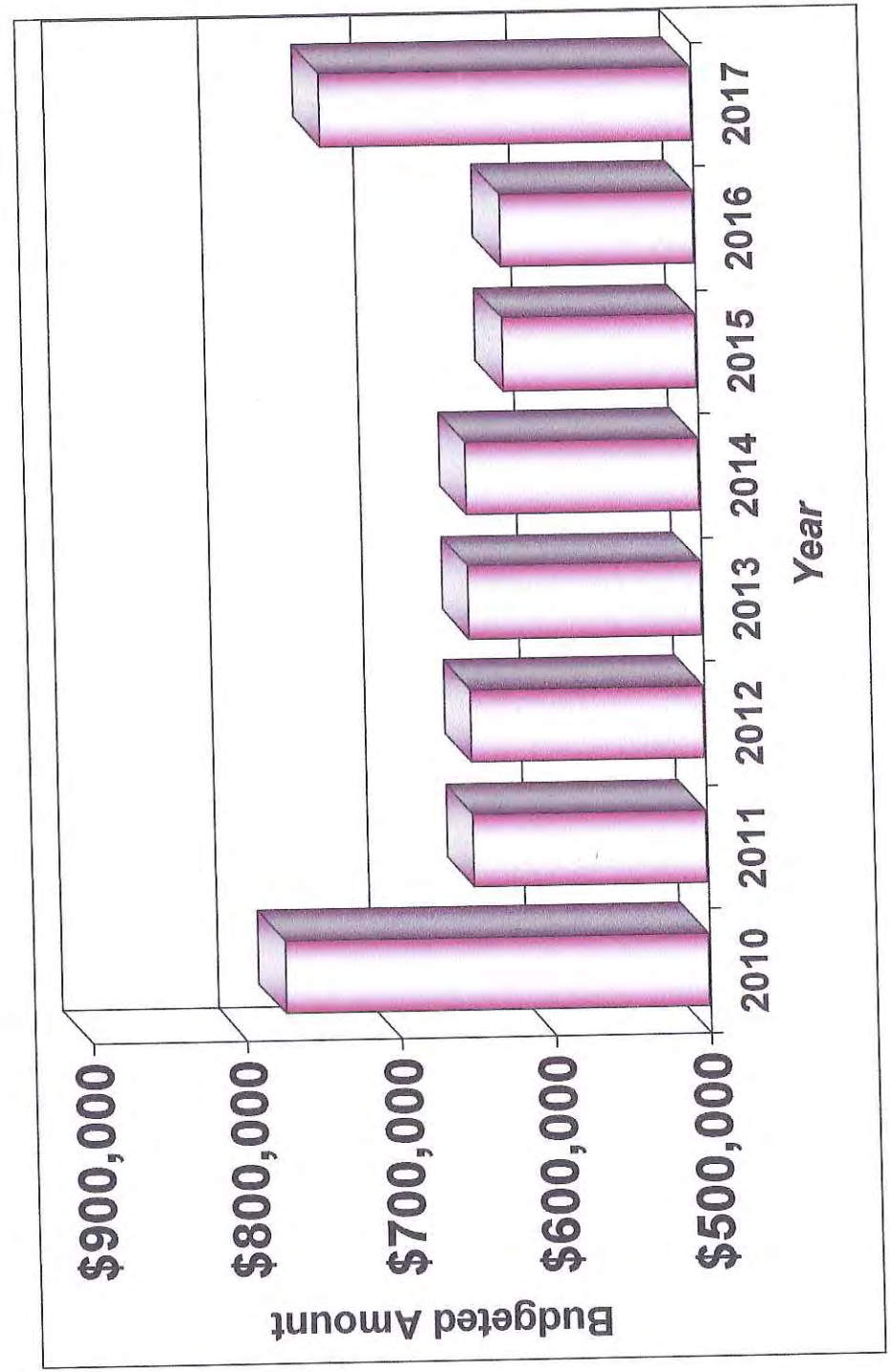


THIS GRAPH DOES NOT REFLECT CULVERT & GUIDERAIL MAINTENANCE MONEY, WHICH IS PROPORTIONED BETWEEN BRIDGES AND ROADS.



# Annual Bridge Maintenance Money

## From 2010 to 2017



# County Vehicle List

ID. Num.	VEHICLE DESCRIPTION	ID. Num.	VEHICLE DESCRIPTION	ID. Num.	VEHICLE DESCRIPTION
14-01	14 Dodge Durango	15-33	15 Ford F350 Crew Cab 1 Ton Pickup	02-67	02 Int'l Dump Truck
06-02	06 Jeep Liberty	13-34	13 Ford F350 Pickup Crew Cab	02-68	02 Int'l Dump Tandem Truck
16-03	16 Ford F250 3/4 Ton 4x4 Pickup	01-35	01 Ford F 450 XL Utility 1 Ton Truck	02-69	02 Ford F450 1 Ton w/Stake Body
13-04	13 Ford F250 3/4 Ton 4x4 Pickup	00-36	00 GMC Sierra 1 Ton Utility Truck	06-70	06 Int'l Dump
15-05	15 Ford F250 3/4 Ton 4x4 Pickup	89-37	89 Oshkosh Dump Truck	71	
01-06	01 Dodge Durango Sport	16-38	16 Ford F350 Pickup Crew Cab	72	
16-07	16 Ford F250 3/4 Ton 4x4 Pickup	16-39	16 Ford F350 Pickup Crew Cab	10-73	10 Int'l Tandem Snow Plow / Dump
13-08	13 Ford F250 3/4 Ton 4x4 Pickup	88-40	88 Int'l Cab Chassis Stake Body Flat Bed	01-74	01 Chevrolet S-10 Pickup (Out of service)
15-09	15 Ford F250 3/4 Ton 4x4 Pickup	08-41	08 Int'l Tandem Dump Truck w/plow	75	
02-10	02 Chevrolet Pickup (Out of service)	00-42	00 Volvo Dump Truck	06-76	06 Ford Taurus
08-11	08 Dodge Durango	02-43	02 Int'l 4700 w/16' Flat Bed Rack Truck	77	
14-12	14 Dodge Durango	83-44	83 Oshkosh Snow Plow	78	
04-13	04 Dodge 2500 3/4 ton 4x4 Pickup	07-45	07 Int'l 7500 Dump Truck	05-79	05 Johnson Sweeper - Freightliner
06-14	06 Ford F250 Pickup (Out of service)	87-46	87 Int'l Dump Truck (Parts Truck)	07-80	07 Freightliner 55-ft. Bucket Truck
01-15	01 Ford F550 Dump	03-47	02 Int'l Dump Truck	01-81	01 Int'l Altec + F11 65-ft. Bucket Truck
14-16	14 Dodge Durango	09-48	09 Ford F250 Pickup	01-82	01 Sterling Elgin Eagle Pavement Sweeper
08-17	08 Ford F250 3/4 Ton 4x4 Pickup	95-49	95 Int'l Dump w/plow model 4900	18-83	18 Freightliner Tymco Broom
04-18	04 Dodge 2500 3/4 ton 4x4 Pickup	86-50	86 Int'l Tractor	88-84	88 Oshkosh Tandem Dump
04-19	04 Ford 550 Dump Truck	97-51	97 Oshkosh Snow Plow	00-85	00 Int'l Eagle Paystar Tri-Axle Dump Truck
86-20	86 Oshkosh Snow Plow	95-52	95 Oshkosh Snow Plow	01-86	01 Int'l Eagle Paystar Tri-Axle Dump Truck
95-21	95 Chevrolet Tahoe (Out of service)	04-53	04 Mack Single Axel Dump	00-87	00 Int'l Tractor
92-22	92 International Dump Truck	03-54	03 Int'l 7400 Dump	88	
18-23	18 Dodge Ram 5500 Dump Truck	90-55	90 Ford/Oshkosh 4x4 Snow Plow	00-89	00 Oshkosh Snow Plow w/spreader
01-24	01 Int'l Crew Cab Truck (Out of service)	91-56	91 Int'l Dump	88-90	88 Oshkosh Snow Plow w/spreader
01-25	01 Int'l Crew Cab Truck (Out of service)	98-57	98 Int'l Dump (Parts Truck)	91	
17-24	17 Dodge Ram 5500 Dump	17-58	17 Western Star Dump Truck w/plow	92	
17-25	17 Dodge Ram 5500 Dump	58-59	58 Oshkosh Snow Blower (Durham)	91-93	91 Int'l Dump Crew Cab (Water Truck)
01-26	01 Int'l 4700 Crew Cab Dump Truck	01-60	01 Int'l Dump	05-94	05 Int'l Paystar Dump Truck w/plow
91-27	91 Int'l 4600 Crew Cab Dump Truck	01-61	01 Int'l Dump (Out of service)	95	
00-28	00 Ford Suburban Expedition	01-62	01 Int'l Dump (Parts Truck)	96	
92-29	92 Int'l Dump Truck	01-63	01 Int'l Dump	97	
03-30	03 Ford F350 4x4 Utility Service Truck	14-64	Freightliner Tandem Dump w/plow	98	
87-31	87 Oshkosh Snow Plow	96-65	96 Int'l Dump Truck	99	
07-32	07 Int'l 7500 Dump Truck	01-66	01 Int'l Paystar Plow	100	

# County Equipment List

DESCRIPTION

ID. Num.

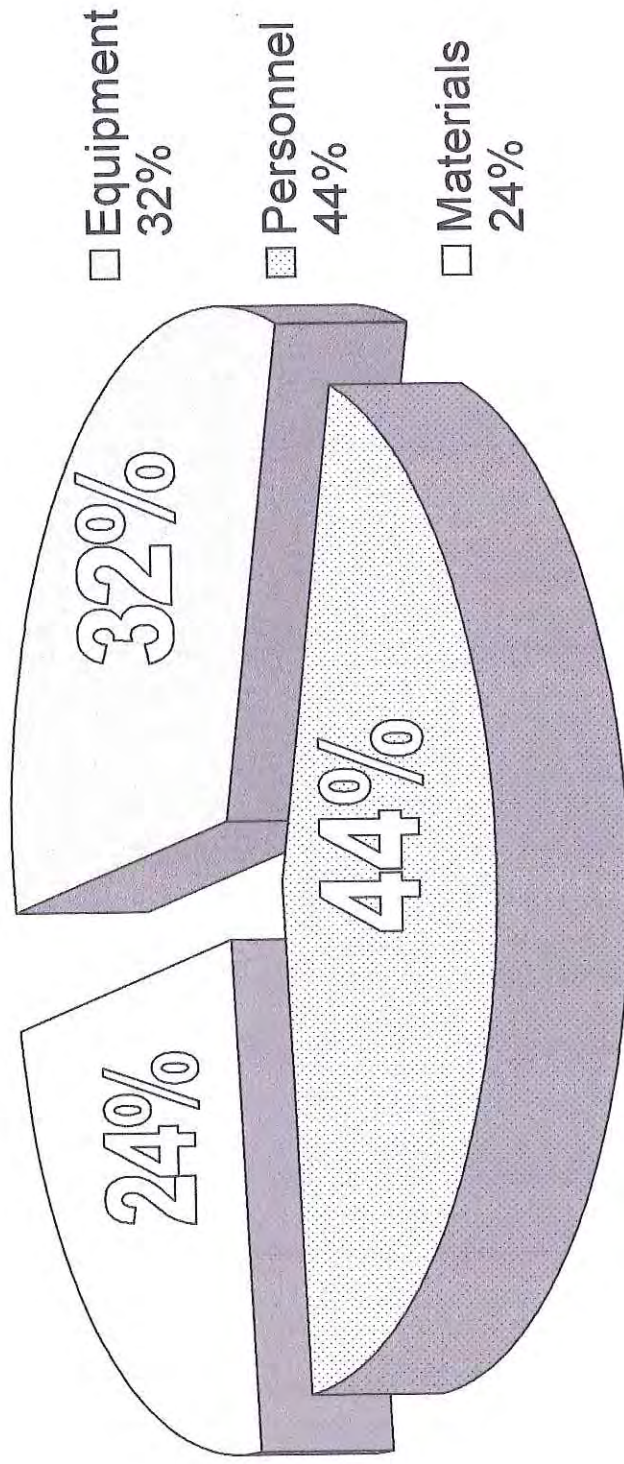
DESCRIPTION

ID. Num.

ID. Num.	DESCRIPTION	ID. Num.	DESCRIPTION
81-E02	81 Power Pack 605 Road Widener 3 cy. / 18 hp.	97-E54	97 Gradall Excavator
99-E06	99 Case 650G Dozer, 80 hp. 2.2cy.	95-E55	95 Gradall Excavator
99-E07	20 Ton Tagalong Trail King Trailer	00-E56	00 Big Tex 6 Ton Trailer
97-E09	97 Ford 555 Backhoe / Loader 1cy. / 65 hp.	00-E57	00 Big Tex 6 Ton Trailer
99-E12	99 Caterpillar 938G Loader 3 cu. yd. / 145 hp.	89-E68	89 John Deere 544E Loader 2.25 cy. / 115 hp.
63-E15	63 Lincoln Welder	01-E70	01 Ingersoll-Rand 873 Bobcat 73 hp.
88-E16	88 Mastercraft Forklift	94-E74	94 Gradall XL-4100 8 cy. / 145 hp.
00-E17	00 Caterpillar 938G Loader 145 hp.	93-E81	93 Morbark 290 Eagle Chipper
81-E22	81 Champion 715 Grader 150 hp.	00-E85	00 Case 590 Super L Backhoe
00-E23	00 Ingersoll-Rand DD12 1/2 ton Roller / 16.5 hp.	01-E86	01 John Deere 4x4 624 Loader / 2.5 cy.
00-E24	00 Ingersoll-Rand DD12 1/2 ton Roller / 16.5 hp.	01-E87	01 Ingersoll-Rand Roller DD110 / 120 hp.
00-E25	00 Big Tex 5 Ton Trailer	00-E87T	00 Talbert 35 Ton Trailer
01-E26	01 Stone Wolfpac 2500 Vibratory Roller / 18 hp.	98-E88	98 Miller Welder
04-E27	04 Stone Wolfpac 3100 Vibratory Roller / 18 hp.	98-E90	98 Vermeer 1230A Chipper 4 cy. / 86 hp.
94-E28	94 John Deere 624 Loader 3.25 cy. 145 hp.	98-E91	98 Vermeer 1230A Chipper 4 cy. / 86 hp.
05-E29	05 Brim Trailer	00-E92	00 Salsco Chipper / 4.21 cy. Diesel
03-E35	03 Broce Broom RJ350 Street Sweeper 80 hp.	00-E93	00 Salsco Chipper / 4.21 cy. Diesel
05-E39	John Deere Tractor / Boom Flail Mower	02-E96	02 Case 590 Backhoe 4cyl. / 99 hp.
15-E40	15 John Deere 5085M Tractor / Flail Mower	80-E108	80 Hauck Steam Culvert Thawer
02-E44	02 John Deere 5320 Diesel Tractor Mower 4 cy.	83-E111	83 Sullair Air Comp. 68 hp., 185 cfm.
91-E45	91 Rexworks SP-910B Roller 87 hp.	88-E112	88 Sullair Air Comp. 78 hp., 185 cfm.
00-E46	00 John Deere 5310 Tractor Mower 55 hp.	07-E115	07 Caterpillar 314C Excavator Track
01-E48	02 John Deere 5320 Diesel Tractor Mower	89-E120	89 Caterpillar Grader 120 hp.
99-E53	99 Gradall G3WD / 8cy. / 190 hp.	85-E200	85 Leeboy Asphalt Maintainer 65 hp.

# 2017 - Snow / Ice Removal

*\* Equipment \* Personnel \* Materials \**



**2017 Annual Budgeted Total: \$1,731,820.00**



# SOLID WASTE MANAGEMENT

## Municipal Solid Waste and Construction & Demolition

2016

2017

### MSW and C&D

### MSW and C&D

January	3,981.71
February	3,967.40
March	4,464.13
April	4,716.22
May	4,694.54
June	5,471.08
July	5,402.05
August	5,867.03
September	5,376.80
October	4,850.31
November	4,897.78
December	4,349.27
<b>Total</b>	<b>58,038.32</b>

January	4,099.58
February	3,675.01
March	4,657.31
April	4,491.72
May	4,889.24
June	6,393.39
July	5,326.29
August	5,084.35
September	6,121.05
October	5,096.25
November	4,635.08
December	5,301.69
<b>Total</b>	<b>59,770.96</b>

**Percentage of 2016 Total**

**102.99%**





# SOLID WASTE MANAGEMENT

## HIGH VOLUME TONS

PREVIOUS	MSW	C&D	TOTAL	YTD TOTAL
42,860.53	3,160.17	312.43	3,472.60	46,333.13

**2017**

December  
YTD

## APPROXIMATE CUSTOMER COUNT

	WINDHAM	HUNTER	BOOTH	SCALE	COXSACKIE
January	2,401	2,223	1,505	1,377	2,907
February	1,848	1,882	1,354	1,281	2,602
March	1,634	1,821	1,538	1,430	2,477
April	2,120	2,188	3,158	1,825	3,246
May	2,004	2,287	3,028	1,776	3,263
June	2,298	2,561	3,903	1,994	3,302
July	2,516	3,642	3,733	1,925	3,452
August	2,631	3,657	3,433	1,905	3,482
September	2,148	3,378	2,836	1,849	3,062
October	2,584	3,311	2,687	1,876	2,954
November	1,906	2,544	2,218	1,639	3,287
December	2,372	2,588	2,465	1,425	3,236
<b>Year to Date</b>	<b>26,462</b>	<b>32,082</b>	<b>31,858</b>	<b>20,302</b>	<b>37,270</b>
<b>Monthly Total</b>					
					10,413
					8,967
					8,900
					12,537
					12,358
					14,058
					15,268
					15,108
					13,273
					13,412
					11,594
					12,086
					<b>147,974</b>

**2016**

January  
February  
March  
April  
May  
June  
July  
August  
September  
October  
November  
December  
Year to Date



# SOLID WASTE MANAGEMENT

## RECYCLABLES SHIPPED

2017

2016

	2016	2017	Percentage of 2016 Total
Batteries	7.60	6.23	81.97%
Cans	65.91	67.35	102.18%
Cardboard	228.68	179.84	78.64%
Electronics	84.22	84.04	99.79%
Glass	159.82	254.47	159.22%
Metal	658.07	660.50	100.37%
Paper	143.73	302.28	210.31%
Plastic	44.91	16.44	36.61%
Textiles	45.75	47.25	103.28%
Tires	62.19	73.65	118.43%
<b>Previous Totals</b>	<b>6.23</b>	<b>6.23</b>	
<b>Current Totals</b>	<b>0.00</b>	<b>6.23</b>	
<b>Previous Totals</b>	<b>64.56</b>	<b>67.35</b>	
<b>Current Totals</b>	<b>2.79</b>	<b>67.35</b>	
<b>Previous Totals</b>	<b>179.84</b>	<b>179.84</b>	
<b>Current Totals</b>	<b>0.00</b>	<b>179.84</b>	
<b>Previous Totals</b>	<b>72.22</b>	<b>84.04</b>	
<b>Current Totals</b>	<b>11.82</b>	<b>84.04</b>	
<b>Previous Totals</b>	<b>239.53</b>	<b>254.47</b>	
<b>Current Totals</b>	<b>14.94</b>	<b>254.47</b>	
<b>Previous Totals</b>	<b>621.68</b>	<b>660.50</b>	
<b>Current Totals</b>	<b>38.82</b>	<b>660.50</b>	
<b>Previous Totals</b>	<b>255.55</b>	<b>302.28</b>	
<b>Current Totals</b>	<b>46.73</b>	<b>302.28</b>	
<b>Previous Totals</b>	<b>16.44</b>	<b>16.44</b>	
<b>Current Totals</b>	<b>0.00</b>	<b>16.44</b>	
<b>Previous Totals</b>	<b>44.25</b>	<b>47.25</b>	
<b>Current Totals</b>	<b>3.00</b>	<b>47.25</b>	
<b>Previous Totals</b>	<b>73.65</b>	<b>73.65</b>	
<b>Current Totals</b>	<b>0.00</b>	<b>73.65</b>	



# 2017 Solid Waste VEHICLES & EQUIPMENT LIST

ID. Num.	Description
SW-2	FORD
SW-3	DODGE
SW-4	INTERNATIONAL
SW-5	CHEVROLET
SW-9	MACK
SW-10	MACK
SW-12	INTERNATIONAL
SW-13	INTERNATIONAL
SW-16	INTERNATIONAL
SW-17	OTTAWA
SW-18	OTTAWA
SW-19	OTTAWA
SW-20	VOLVO
SW-49	INTERNATIONAL
SWT-9	GALBREATH
SWT-10	GALBREATH
SWT-21	SPEC TEC
SWT-22	SPEC TEC
SW130G	JOHN DEERE
SW-310G	JOHN DEERE
SW-863	BOB CAT
SW-510B	JOHN DEERE
SW-416E	CATERPILLAR
SW-416E1	CATERPILLAR
SW-92	YALE
SW-914 K	CATERPILLAR
SWT-15	STECO
SWT-16	STECO
SWT-18	STECO
SWT-20	FRUEHAUF
No #	STRICK
No #	STRICK
	F350 MECHANICS TRUCK
	1500 PICKUP
	CREW CAB DUMP VAN
	TRACTOR
	TRACTOR
	BOX TRUCK
	ROLL OFF TRUCK
	TRACTOR
	YARD TRACTOR
	YARD TRACTOR
	YARD TRACTOR
	TRACTOR
	TRACTOR
	TRIAXLE TILT TRAILER
	TRIAXLE TILT TRAILER
	COMPACTOR TRAILER
	COMPACTOR TRAILER
	EXCAVATOR
	BACKHOE
	SKID STEER LOADER
	BACKHOE
	BACKHOE
	BACKHOE
	FORK TRUCK
	LOADER
	COMPACTOR TRAILER
	COMPACTOR TRAILER
	COMPACTOR TRAILER
	BOX TRAILER
	BOX TRAILER
	BOX TRAILER

## TRAILERS

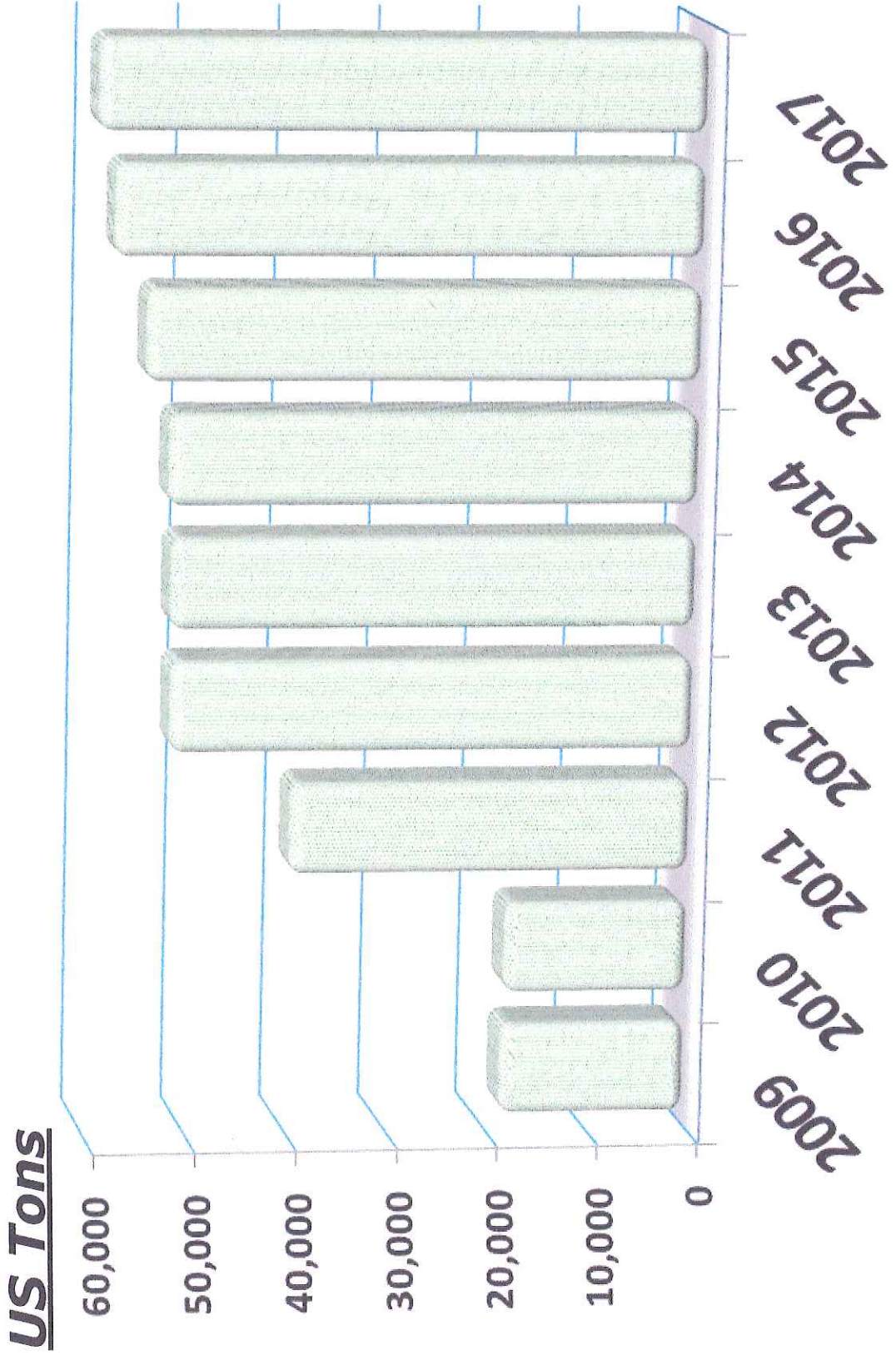
## EQUIPMENT

## STORAGE CONTAINERS



# SOLID WASTE MANAGEMENT

**TOTAL VOLUME OF MUNICIPAL SOLID WASTE BY YEAR.**



**Tons of Municipal Solid Waste and Construction & Demolition Debris Per Year.**



# 2017 TRAINING and SEMINARS

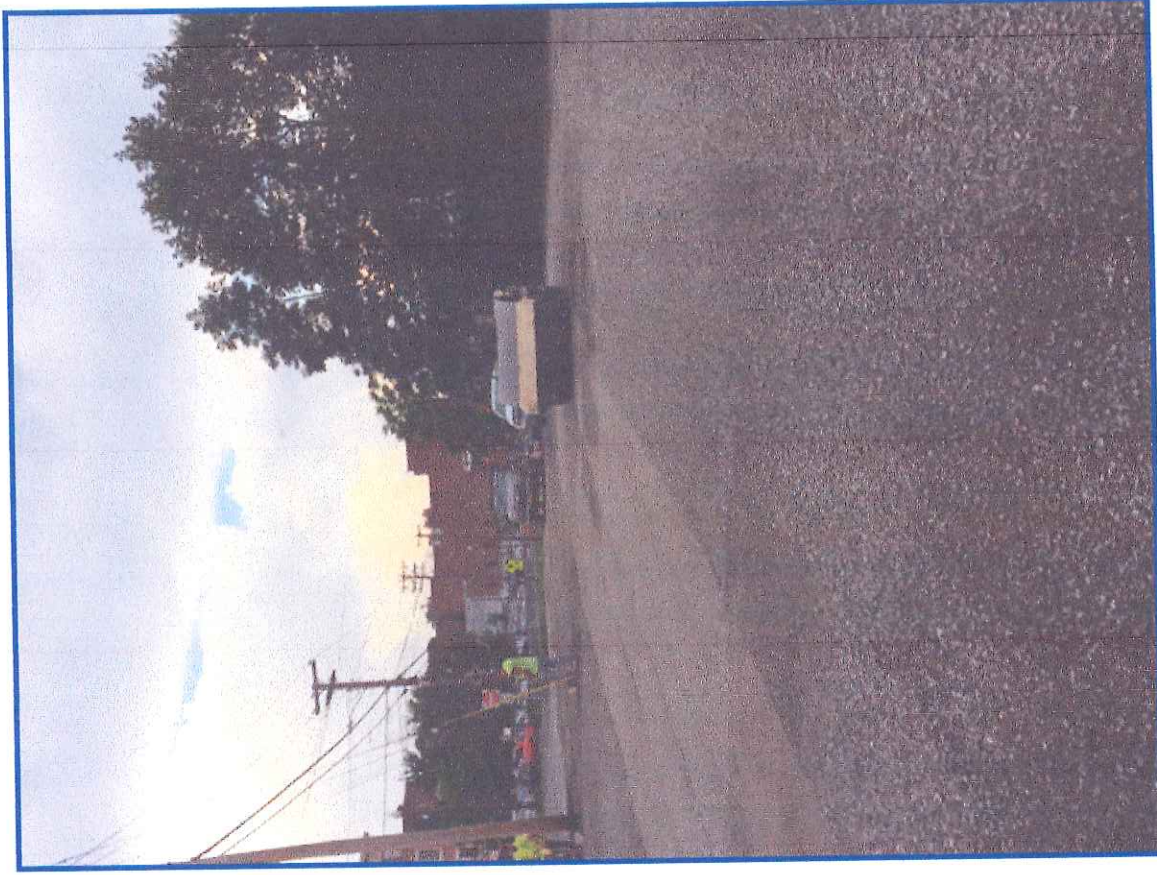
DATE	EVENT	LOCATION	ATTENDEES	DEPARTMENT
January 6	Game of Logging (Chainsaw Safety Training)	Cairo	All Laborers	Highway
January 31	Annual Safety Training	Cairo	Various Staff	Highway
February 6-8	Snow Plow Training	Cairo	Highway Staff	Highway
April 21	Operator Training for Lifts	Shop one & Catskill Trans.	Various Staff	Highway & Solid Waste
April 25	Chainsaw, Chipper, Catskill & Electrical Hazzard	Cairo	Highway Staff	Highway
April 26	Wheel Loader Training	Building 3 & 5	Various Staff	Highway
May 2	Flagging Seminar	Cairo	All Laborers	Highway
May 15-18	Lime Disease Prevention	Building 2, 3, 4, & 5	All Staff	Highway
May 25	Road Safety 365	Acra	Deputy, Bldg. Supervisor	Highway
June 5	Tractor Mowing Training	Athens	All Staff Bldg. 2	Highway
June 29	Performance Management	411	Superintendent, Deputy Foremen, Crew Leader	Highway & Solid Waste



# 2017 TRAINING and SEMINARS

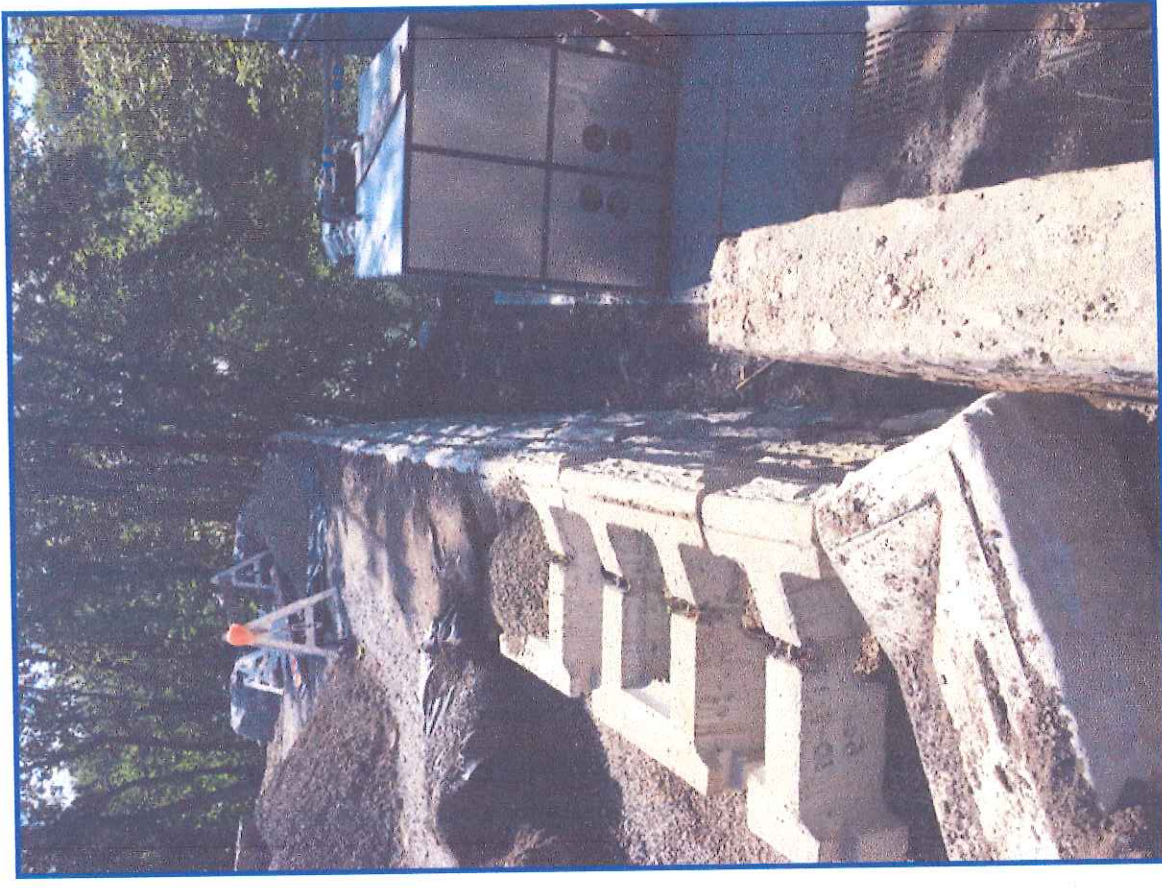
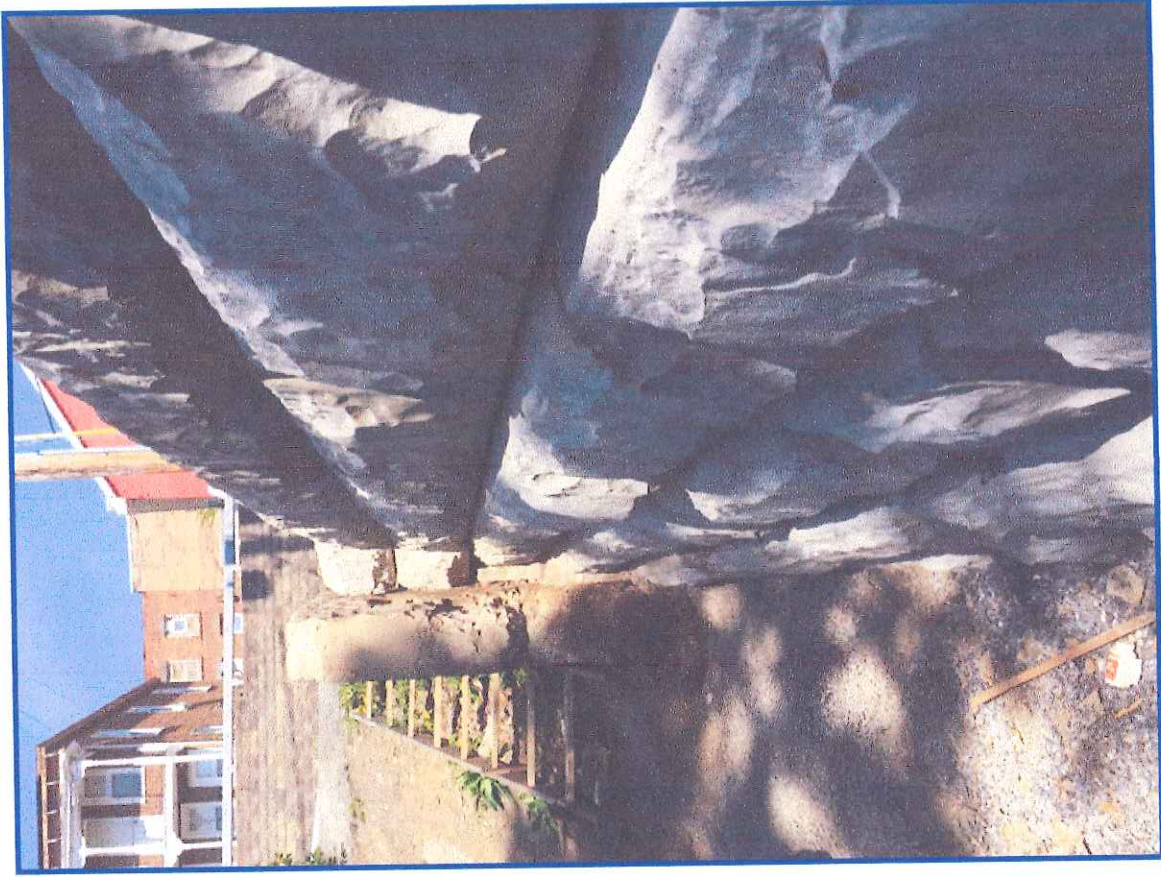
DATE	EVENT	LOCATION	ATTENDEES	DEPARTMENT
July 10-13	Road side Needle by NYS Dept. of Health	All buildings	Various	Administration
August 22	Needle Smart	Public Health	Various	Solid Waste
September 25	Sweeper Training	Acra	Bldg. 3	Highway
September 27	Compliance for Bulk Storage Tanks	Utica	Dep. Superintendent	Administration
October 24-31	Lockout / Tag out Policy & Procedures	Freehold, Cat Trans. Shop one, Ashland	Mechanics	Mechanics Shop
November 16	Sander Control Training	Athens	Various	Highway
November 28	Work Place Violence Prevention	Cairo	All Staff	Highway & Solid Waste
December 5-11	Fire & Emergency Evacuation	All buildings & Transfer Stations	Dep. Superintendent	Administration

# COUNTY PARKING LOT F - VILLAGE OF CATSKILL



***Working in conjunction with one of our miscellaneous bridge contractors, GCHD converted the old Poplock Property into a parking lot known as Lot F.***

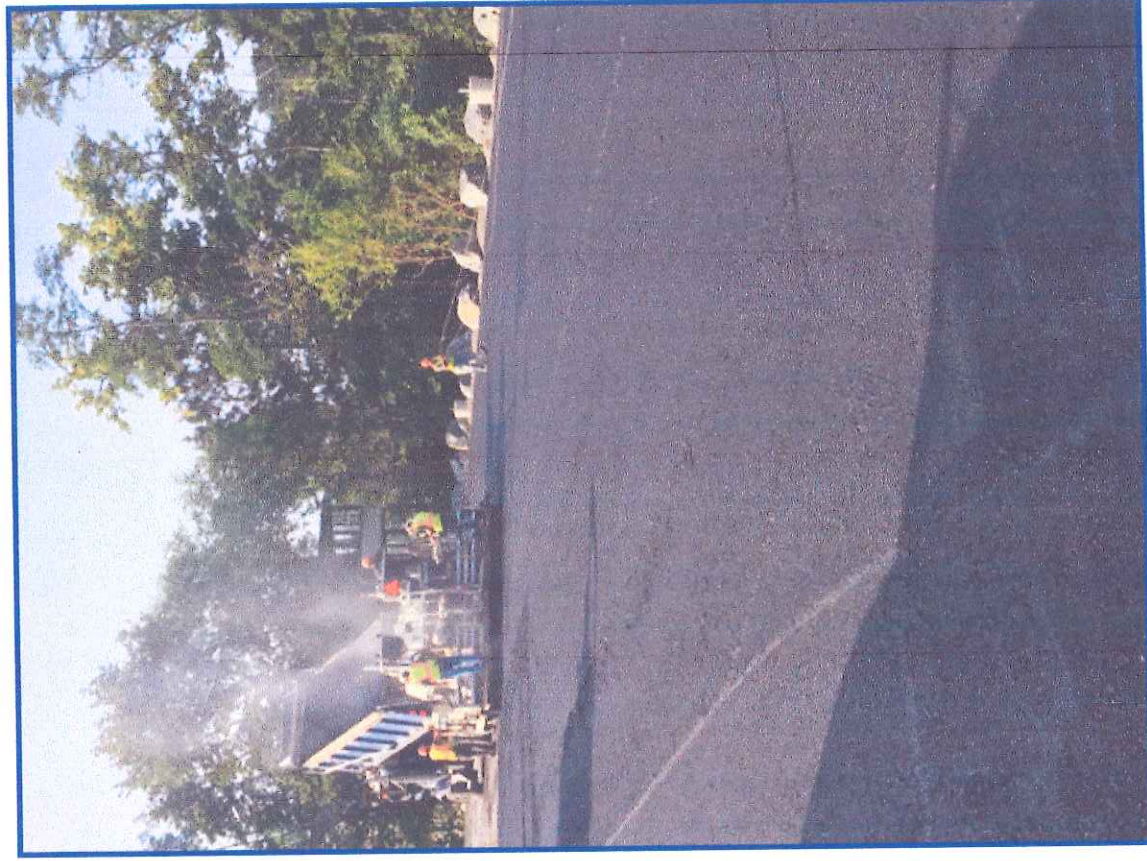
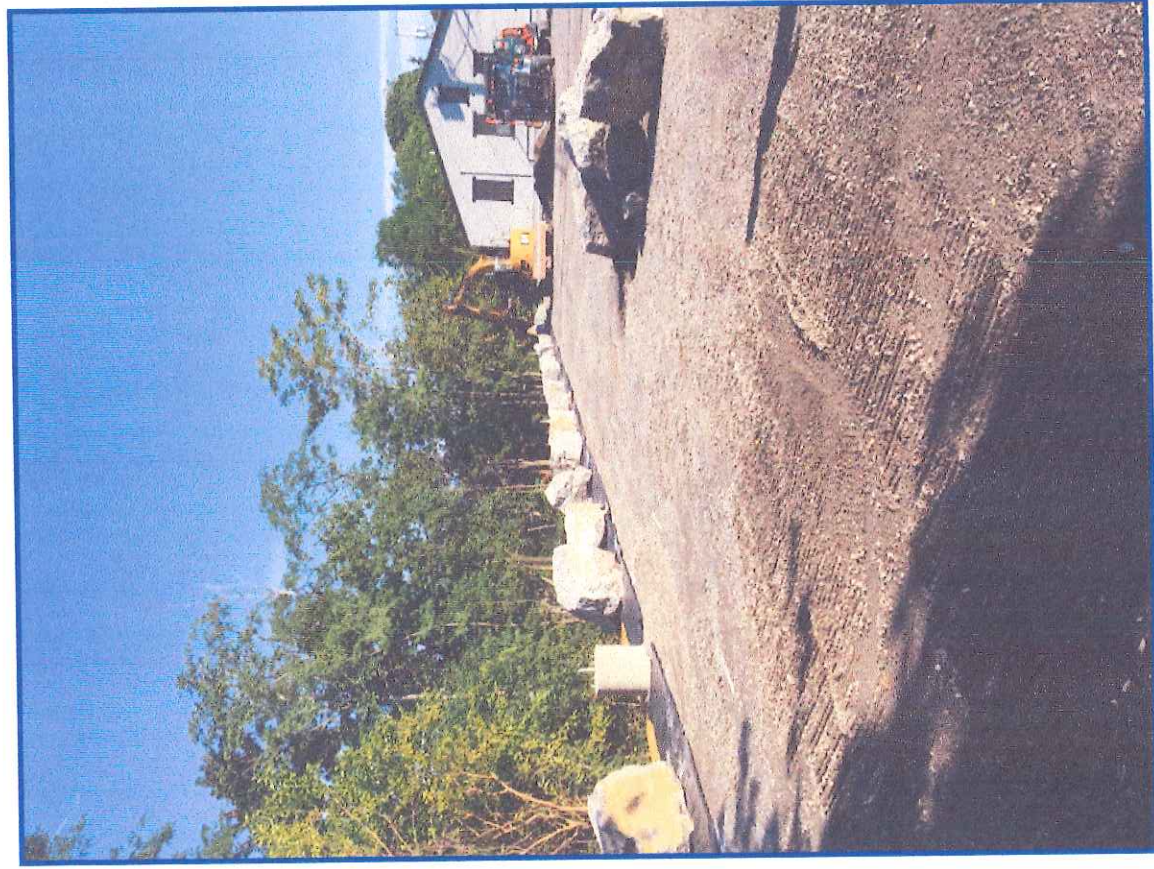
**COUNTY PARKING LOT F - VILLAGE OF CATSKILL**



***Stone Strong Modular Blocks are a large, engineered, precast retaining wall block that increases gravity wall height, without the need for tiebacks or geogrids. These interlocking blocks incorporate a built-in void for internal drainage that installs easily and quickly, resulting in schedule and labor savings.***

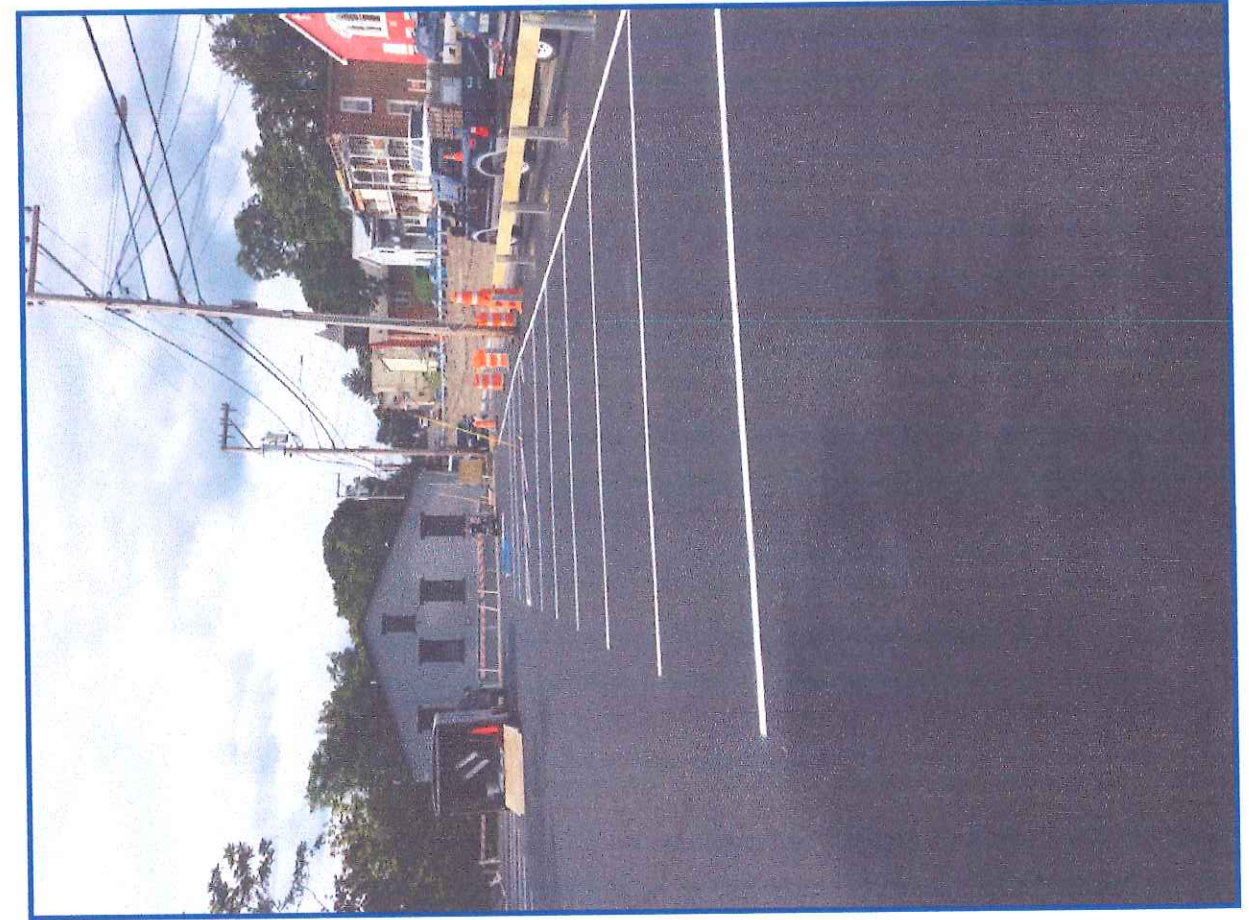


## COUNTY PARKING LOT F - VILLAGE OF CATSKILL

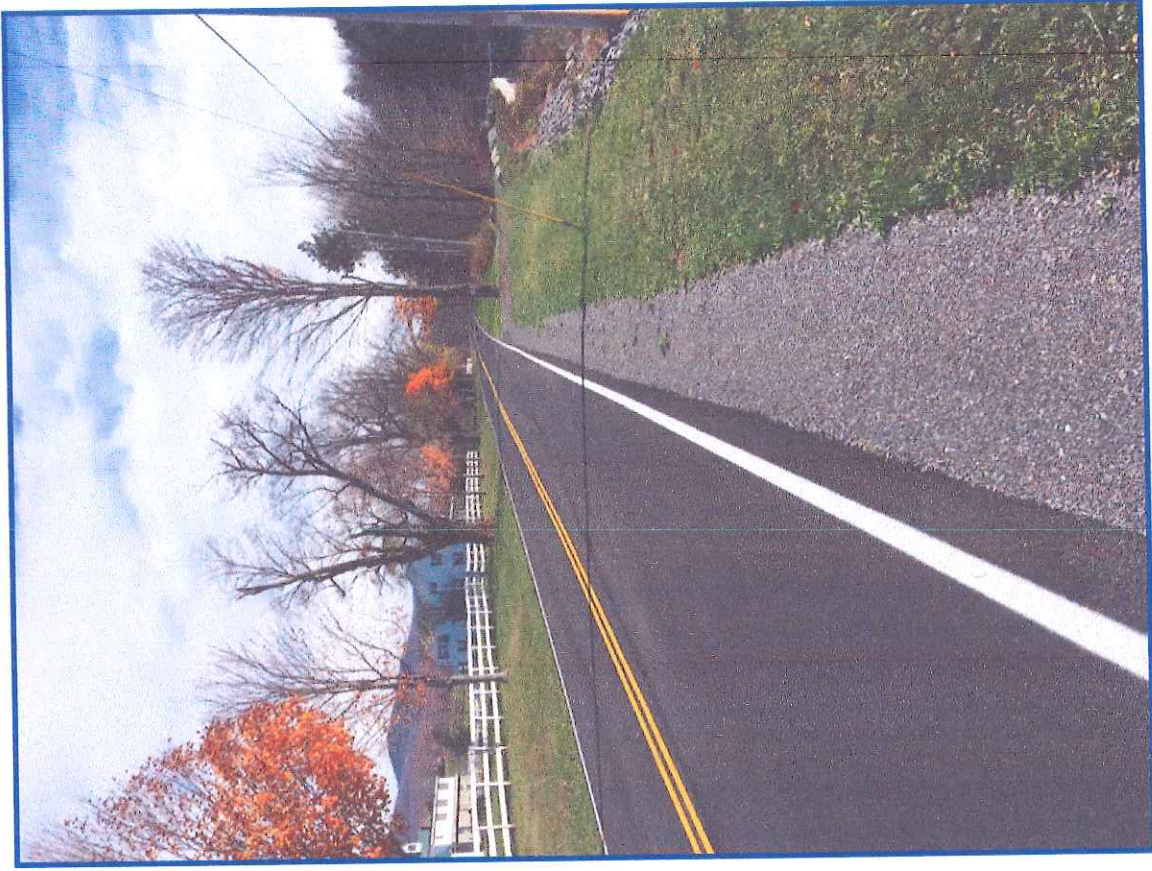
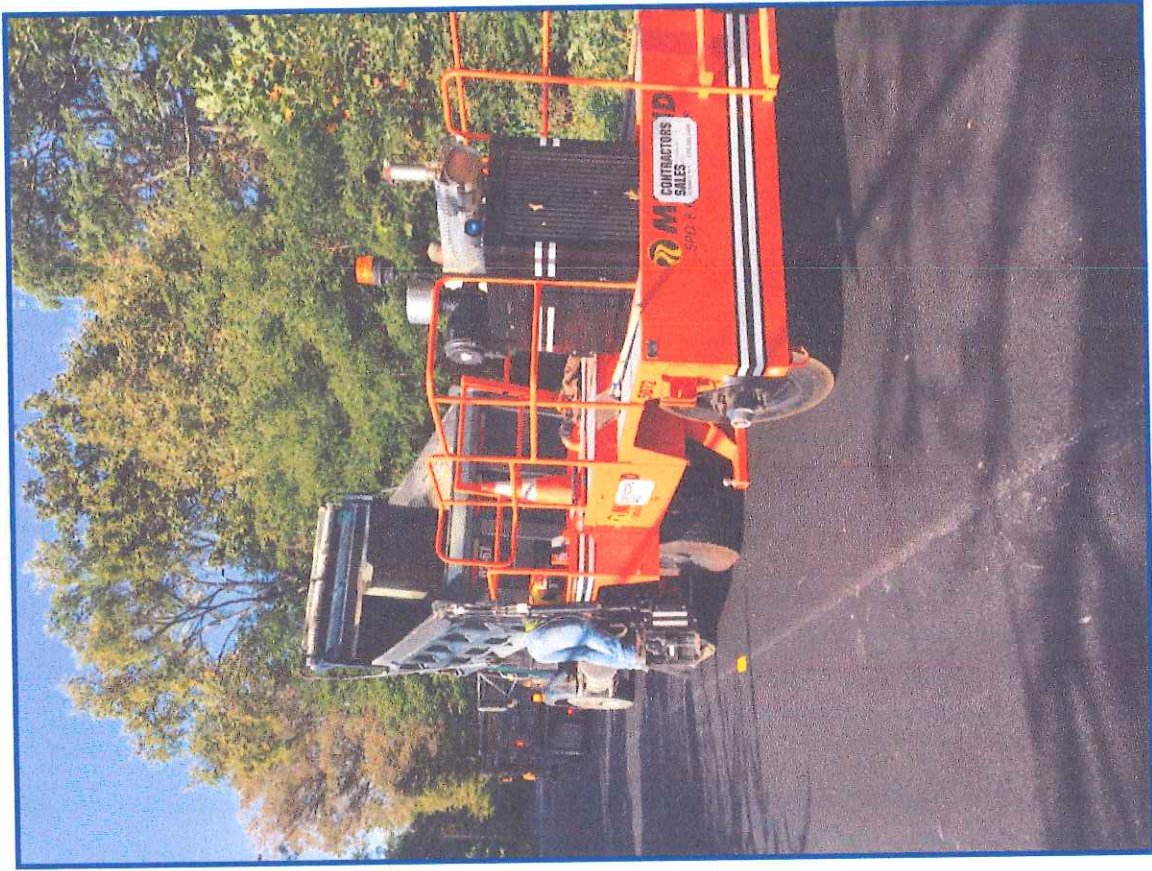


***In lieu of costlier guiderail and posts, large heavy stone fill (Rip-Rap) was delivered from a local quarry and set utilizing county forces.***

**COUNTY PARKING LOT F - VILLAGE OF CATSKILL**



**COUNTY ROAD 23C - TOWN OF JEWETT**



***Utilizing county forces along with a rented Shoulder machine, placed 6,843 tons of shoulder backup material alongside newly paved roads.***

# *Greene County Highway Quick Facts for 2017*

## **57- HIGHWAY EMPLOYEES**

Superintendent  
Deputy Superintendent  
1- Senior Highway Building Supervisor  
4- Highway Building Supervisor  
Gradall Operator  
9- Motor Equipment Operators  
7- Heavy Equipment Operators B  
2- Heavy Equipment Operator A  
Sign Maintenance Worker  
16- Laborers

## **SHOP 1 EMPLOYEES**

Garage Manager  
Lead Heavy Equipment Repairman  
2- Heavy Equipment Repairmen  
2- Auto Mechanics

## **CSEA EMPLOYEES**

3 - Senior Engineering Tech.  
Office Manager  
Administration Assistant  
Senior Account Clerk  
Stenographer  
Account Clerk Typist

# *Greene County Highway Quick Facts for 2017*

## **REQUESTS FOR SERVICE** (Complaints)

279 logged requests.

## **COUNTY WORK PERMITS**

68 Requested permits for Work to be completed within Greene County Right-of-Way.

## **ASPHALT PAVING**

19.5 miles of road paved.

30,375.02 Tons of Asphalt used on sections of 12 county roads.

### *In Preparation for Paving*

35 Crossover pipes replaced.

27 lane miles of ditching, (approx.) tree trimming, and brush removal.  
Provided traffic control and Construction Inspection.

Used -

2,234.72 Tons of asphalt for patching.

6,842.62 Tons of material for shoulder backup.

Paved two parking lots totaling 771 tons of asphalt.

## **ROAD SWEEPING**

261 miles of roadway and 135 bridges were swept.

Utilized - 2 Rental sweepers.

2 Truck mounted. (A third sweeper purchased this year.)

1 Broce Broom Street Sweeper.

4 Water trucks.

### ***In Hamlets located within the Watershed***

33 Days of sweeping.

252 Cubic yards collected.

528 Man hours of labor.

12 Catch basins cleaned.

# *Greene County Highway Quick Facts for 2017*

## **MISCELLANEOUS BRIDGE PROJECTS.** (G.C.H.D. Supplied necessary material and trucking.)

- 2 Bridge Projects. (Cr. 21 Mitchell Hollow Road, & Golden Hill Road Bridge)
- 2 Large Culvert Projects. (Cr.'s 01 & 41)

## **SIGN DEPARTMENT**

- 11,638.77 Gallons of paint for Striping
- 218.12 Center line miles
- 269.14 Edge line miles
- 6 Designed and signed closure detours.  
Mapped and lettered all new county equipment and vehicles.

## **SHOP 1**

- 81 Vehicles serviced, maintained, or repaired. (Highway only – does not include other agencies.)
- 53 Pieces of Equipment serviced, maintained, or repaired.
- 105,354.40 Gallons of fuel used.
- 27,632.30 Gallons of Unleaded Gasoline.
- 77,722.10 Gallons of Diesel Fuel.

## **RIGHT-OF-WAY MOWING**

- 4 Rounds of mowing.

# *Greene County Solid Waste Quick Facts for 2017*

## \$4,959,709 TOTAL SOLID WASTE BUDGET

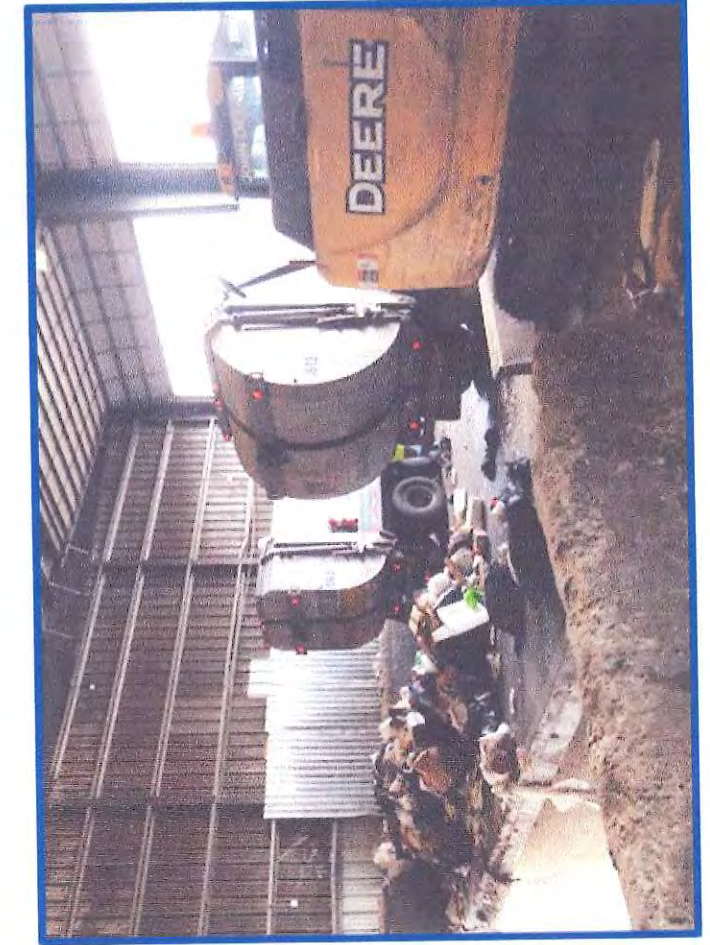
### 17- SOLID WASTE WORK FORCE EMPLOYEES

- 8 Landfill Attendant / Laborer
- 3 Transfer Station Operator
- 1 Motor Equipment Operator
- 3 Heavy Motor Equipment Operator A
- 1 Solid Waste Crew Leader
- 1 Heavy Equipment Repairman

### 1- SOLID WASTE CLERICAL

- 1 Account Clerk

### **Catskill Transfer Station**



## *Greene County Solid Waste Quick Facts for 2017*

- The average person generates approximately 4.5 lbs. of waste each day. (average)
- The average 30 gallon black trash bag weighs approximately 30 lbs. So the average person generates about one bag per week.
- At 30 lbs. it takes 67 bags to make a ton.
- 59,770 tons, our 2017 volume would equal 3,984,667 bags.
- Approximately 1,758 trailer loads were disposed of last year.
- 147,974 customer visits in 2017. Coxsackie had the most visits and was the only station open six days per week.
- Our Municipal Solid Waste, approximately 81% of the waste stream is transported to the Seneca Meadows Landfill in Waterloo, NY for disposal. The landfill is the largest in NYS and covers approximately 400 acres on a 2,600 acre site and has a maximum height of 280'. It accepts up to 7,700 tons per day, or over 2,400,000 tons per year. The landfill is required to maintain a total of 50 operating permits covering air, water and solid waste. Reported revenues are near \$48,000,000 per year.
- The trash hauling is done by MBI, a subcontractor to Seneca Meadows. The transfer trailers have four axles and a capacity of 156 CY with a maximum legal payload of 39 tons. The average load is about 34 tons.
- In 2000 our total volume was 10,358 tons with a workforce of 17 Full time employees (FTEs). We handled 59,770 tons in 2017 with the same workforce of 17 FTEs.
- Enough methane gas is produced and collected at the landfill to generate 18 Megawatts of electrical power, enough to power about 16,500 homes.

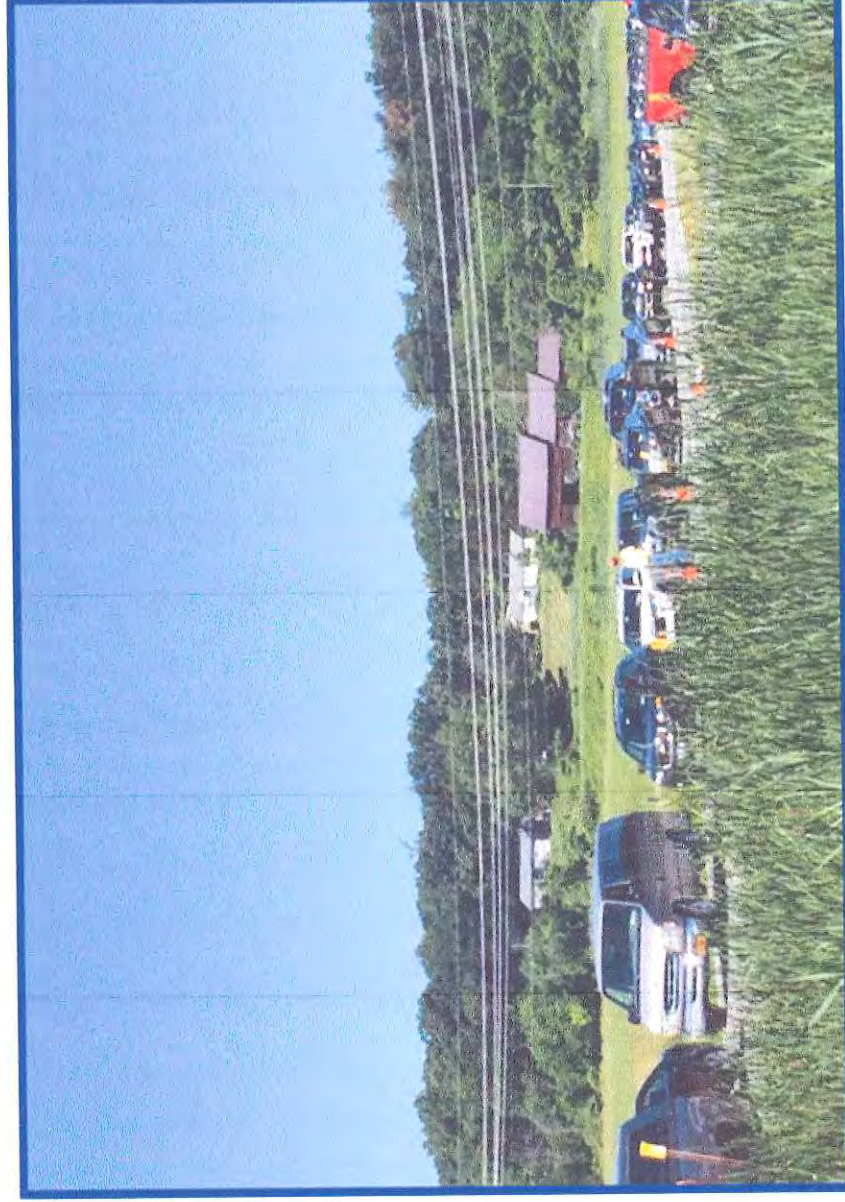


## *Greene County Solid Waste Quick Facts for 2017*

- Each round trip to Seneca Meadows is 428 miles. The drivers make one trip per day. The trucks average fuel economy is 4.9 MPG and each trip requires 95 gallons of diesel fuel. For the 48,600 tons that will go to Seneca Meadows this year it will take around 1,429 trips that will require around 135,755 gallons of diesel fuel. At a cost near \$3.00 per gallon that's a total cost of \$ 407,265.
- Approximately 19% of the waste stream is Construction and Demolition debris which is separated and transported to the Dunn C&D Landfill in Rensselaer for disposal. The costs for both transportation and disposal there are significantly lower.
- Catskill Transfer is permitted by NYSDEC to accept up to 223 tons per day. The other stations are registered with NYSDEC and can accept up to 11,500 tons per year.
- Seneca Meadows was selected as the lowest cost option out of two proposals received in response to our RFP last year. We are finishing the first year of a three year contract for transportation and disposal. Our current actual cost per ton is several dollars per ton less than we paid in 2004.
- We processed and marketed over 1,676 tons or 3,351,340 lbs. of source separated recyclable material last year. This includes 1,321,000 lbs. of metal, 359,680 lbs. of cardboard, 32,880 lbs. of plastic, 135,323 lbs. of electronics and 147,300 lbs. of tires. CW does not bring us any of the recycling they pick up.
- 95% of the electronics by weight accepted for recycling were televisions.

## *Greene County Solid Waste Quick Facts for 2017*

- Working with Public Health we picked up and transported to nursing homes for disposal 2,395. lbs. of needles from eight Needle Smart sites throughout the county.
- Disposed of waste from sites at the Towns of Greenville and Halcott and recycling from five municipal sites and numerous county departments.
- Assisted most of the towns and villages with their clean up days and the county Youth Fair with trash disposal.
- We collected and delivered approximately 172,622 nickel bottles for redemption to ARC and held our annual HHW collection disposing of two trailer loads of hazardous waste.



**Annual Household Hazardous Waste Collection held at Building #2 in Athens.**



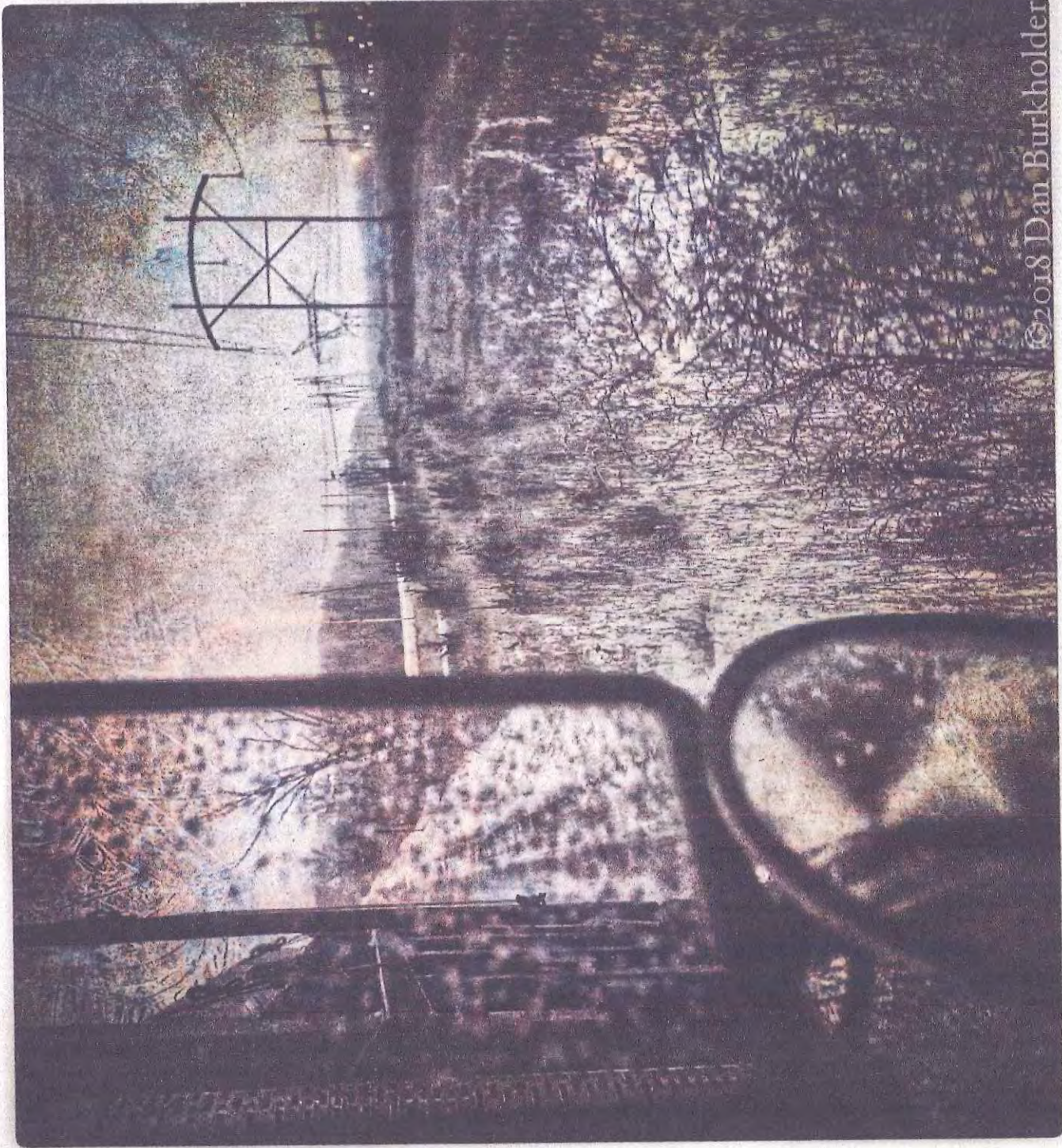
# DAN BURKHOLDER

PHOTOGRAPHER

Professional photographer, Dan Burkholder received both his BA and Master's Degrees from Brooks Institute of Photography. No stranger to traditional photography, he was a workshop student of Ansel Adams and his mastery of the wet darkroom was highlighted by serving as assistant to both John Sexton and Jerry Uelsmann. In the early 1990's, he was one of the first photographic artists to embrace digital technology. Dan was one of the first fine art photographers to champion digital technology by creating the digital negative in 1992, and has helped open doors for all black and white photographers interested in moving into the new electronic technologies. His award-winning book, *Making Digital Negatives for Contact Printing*, is regarded as the most authoritative work in the field.

His platinum/palladium prints combine the control of digital technology with the classic beauty of the handmade darkroom print. A Master platinum printer, Dan also developed methods leading to the Pigment-Over-Platinum print and the Platinum/Palladium Over Gold Leaf print..

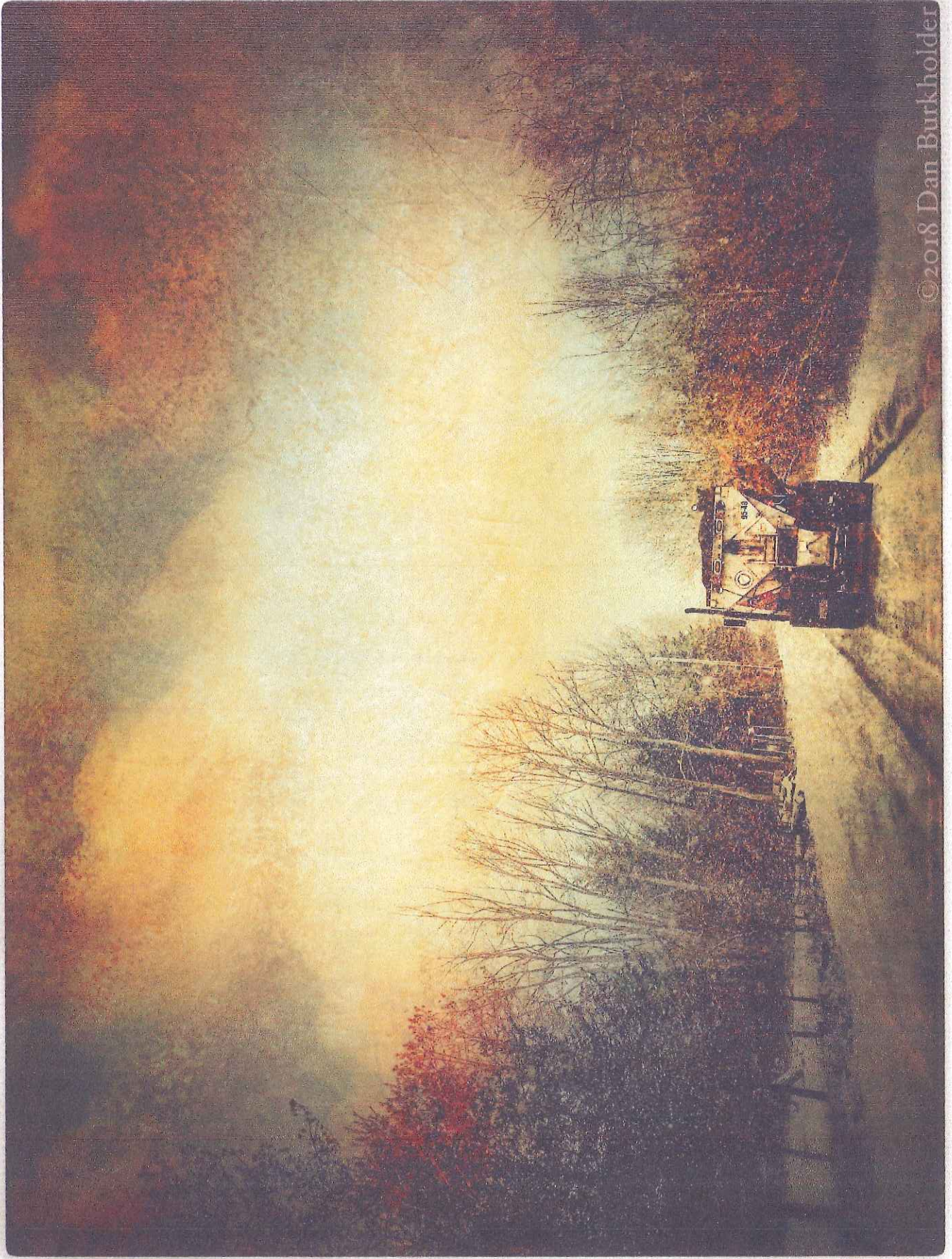
*Dan applied for a photographic grant and partnered with the Greene County Highway to take pictures during his past winter's snow events along County Roads. He was kind enough to supply us with some of his results. The following pages contain those images.*



©2018 Dan Burkholder

*County Road 74 - Looking North towards Athens Generating Plant.*

*County Road 21 in Windham*



©2018 Dan Burkholder

*Building #2 Athens Salt Shed*

