



KISKATOM FIRE DEPARTMENT

4838 Route 32 - Catskill NY 12414

August 1, 2016

Enclosed you will find the final mailing regarding the 128th Greene County Volunteer Firemen's Association Convention being held on September 6-10, 2016.

There is information on the events for each day, maps of the parade routes and parking locations, and parade rules.

If you have any questions, please contact one of the following people:

Pete Kusminsky 518-821-5754 Convention Chairman
Mark MacCormack 518-610-1361 Convention Co-Chairman
Michael Overbaugh 518-943-6545 Parade Chairman

We look forward to seeing you in September and pray for GREAT weather.

Pete Kusminsky
Convention Chairman



KISKATOM FIRE DEPARTMENT

4838 Route 32 - Catskill NY 12414

INFORMATION ON MEETINGS, DINNERS, MARDI GRAS, AND DRESS PARADE

LADIES AUXILIARY MEETING

Tuesday, September 6, 2016 – held at the Kiskatom Fire Dept., 4838 Rt. 32, Catskill. Starts at 7:30 pm. Refreshments will be served after the meeting.

LADIES AUXILIARY DINNER/ENTERTAINMENT

Wednesday, September 7, 2016 – held at the tent at the Kiskatom Fire Dept., 4838 Rt. 32, Catskill. Cocktail is 5-6 pm, dinner at 6pm. Followed by Entertainment

ASSOCIATION DINNER/MEETING/ENTERTAINMENT

Thursday, September 8, 2016 – held at the tent at the Kiskatom Fire Dept., 4838 Rt. 32, Catskill. Dinner is continual serve from 5 – 7 pm. Dinner will be followed by the Memorial Service at 7:30 and the Annual meeting Starting at 8pm. Entertainment will follow the meeting.

MARDI GRAS PARADE

Friday, September 9, 2016 – Line-up is at 6:00 pm on Ramsey School Rd., Catskill. Enter off of Rt. 23A (it's about ½ mile before Rt. 23A and Rt. 32 if heading West on 23A or ½ mile after intersection if heading East on 23A). Line-up is by first come order. We will proceed north on Ramsey School to Mountain Tpke., making a left onto Mountain Tpke and proceed to the firehouse. Food/refreshments will be served following parade and trophies awarded soon after. (see map for further) **THERE ARE NO SHUTTLE BUSES.**

DRESS PARADE

Saturday, September 10, 2016 – Line-up is at 1:00 pm with step-off at 2:00. **APPARATUS WILL BE JUDGED IN-LINE, DURING PARADE.** Parade line-up will be on Rt. 32, south of the intersection of Rt. 23A and Rt. 32. You can get there by way of 32A in Palenville to 32 North OR by Heading South on Rt. 32 at 23A. There are TWO locations that you will be able to turn around to head back North. (see map for further). Parade will proceed North on Rt. 32 to the tent at the Kiskatom Fire house. Parking for personal cars will be in the former Friar Tuck parking lot off of Mountain Tpke and parking for Fire Apparatus after parade will be in the former Friar Tuck parking lot off of Rt. 32. **Shuttle Buses will be available starting at 12:00 pm. from parking lot off of Mtn. Tpke.** 2 buses will run from 12 to 2 and 1 bus available until 4 pm. Food/refreshments will follow parade with trophies awarded at approx.. 6pm – give or take a few!!

Mardi Gras Parade Participants (as of 8/1)

Listed in no particular order – remember, line-up is first come basis.....

Blue Vests
Kiskatom
Storys Farm
Palenville
Cairo
Catskill
Cornell
DM Hamilton
East Durham
Freehold
Greenville
Saxton
Coxsackie Hose 3
Earlton
Haines Falls
Leeds
East Greenbush
Town of Athens

If your department is not on here and you want to participate,
Just show up!!

Escort Division

NY State Police Color Guard
Grand Marshal - Escort
GCVFA
GCVLA
Fireman of the Year
GC Legislatures
Town of Catskill
Scholarship Winners
Gent Band
Kiskatom Fire Dept. & Aux.
Tarrytown Vets Drum Corp
Palenville Fire Dept. and Aux.
Yankee Doodle Band
Catskill Fire Dept. & Aux.
Leeds Hose Co. No. 1 & Aux.
Round Top Fire Dept.

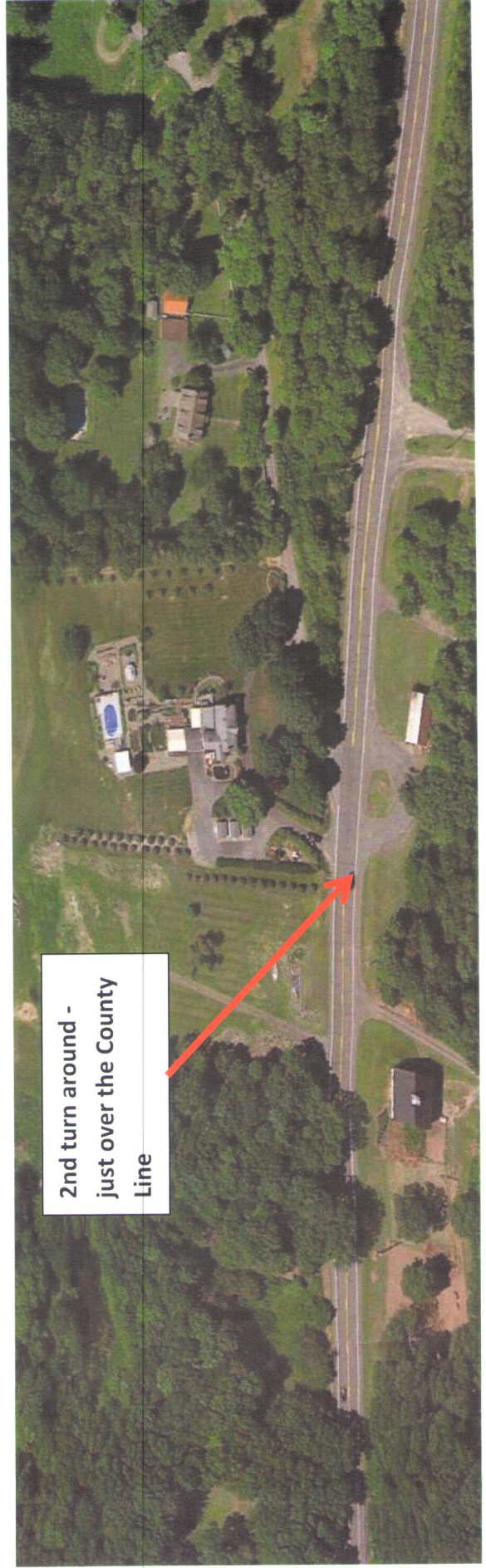
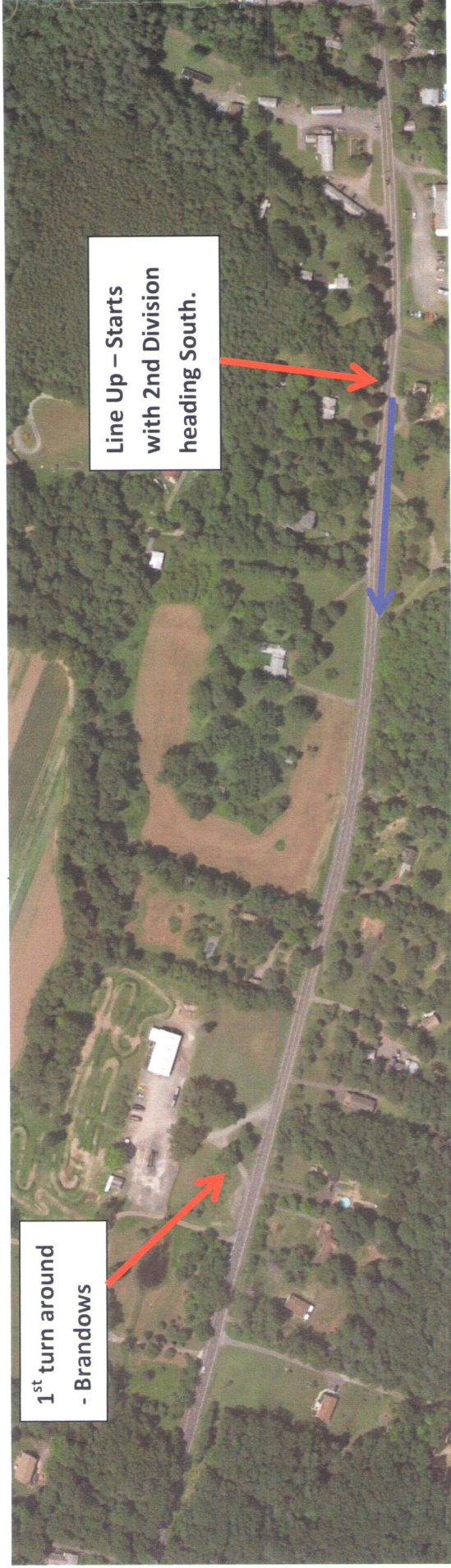
1st Division

GC Sheriff Color Guard
Marshal - 1st Div.
Hensonville Hose Company
Windham Hose Company No. 1
Town of Lexington Fire Company
Cairo Hose Company
Hunter Fire Company No. 1
Prattsville Hose Company & Aux.
Cornell Hook and Ladder Fire Co. & Drumline
HD Lane Vol. Fire Co.
Oak Hill Durham Vol. Fire Co. & Aux.
DM Hamilton Steamer Co. No. 1, Drumline & Aux.
Freehold Vol. Fire Co.
JW Hoystadt Hose & Drum line
Medway Grapeville Fire Dept
Saxton Fire District

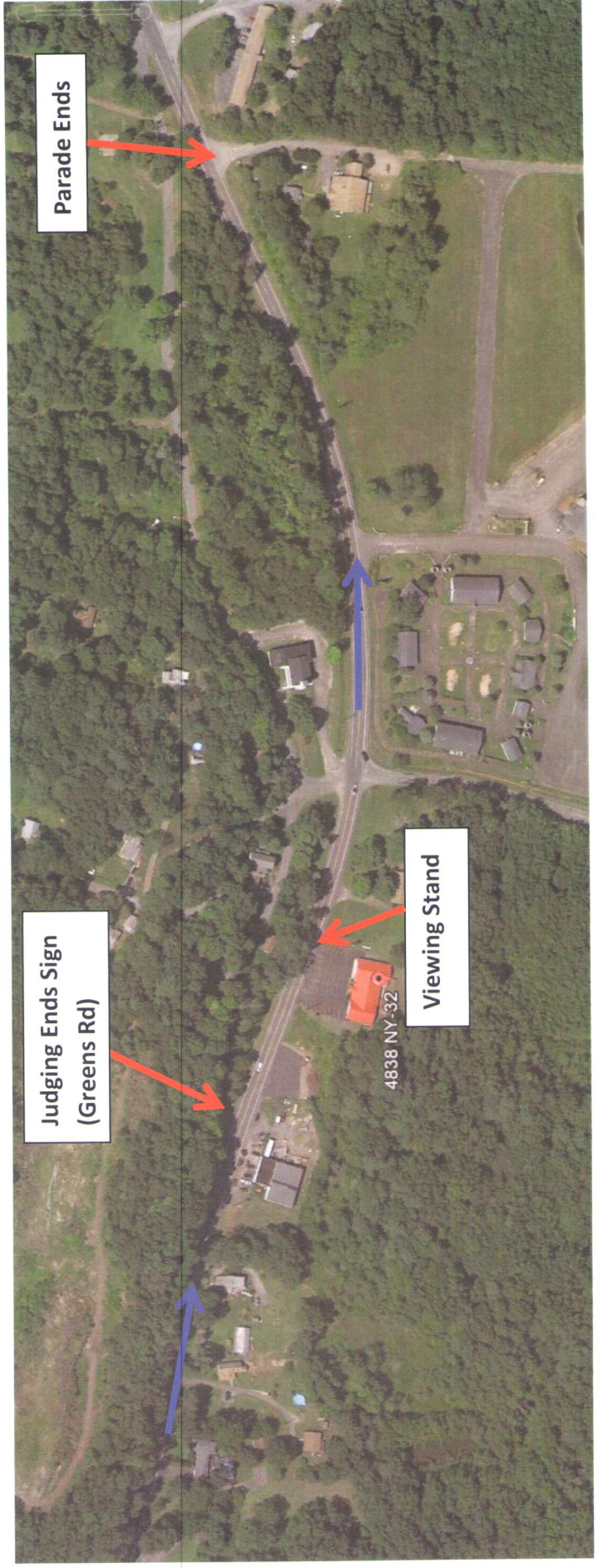
2nd Division

GC Corrections Color Guard
Civil Air Patrol Color Guard
Marshal - 2nd Div.
Knox Fire Dept Band
East Durham Vol. Fire Co. & Aux.
Tannersville Fire Dept.
Greenville Fire Co. & Aux.
Greenport FD Drum line
Coxsackie Hose Co. 3 & Aux.
Avant Garde Drum line
Earlton Fire Dept. & Aux.
Haines Falls Fire Comp. & Aux.
Centerville/Cedar Grove Fire Companies
East Greenbush Fire Co.
The Red Caps Marching Band
Town of Athens Fire Departments & Aux.
Ravena FD

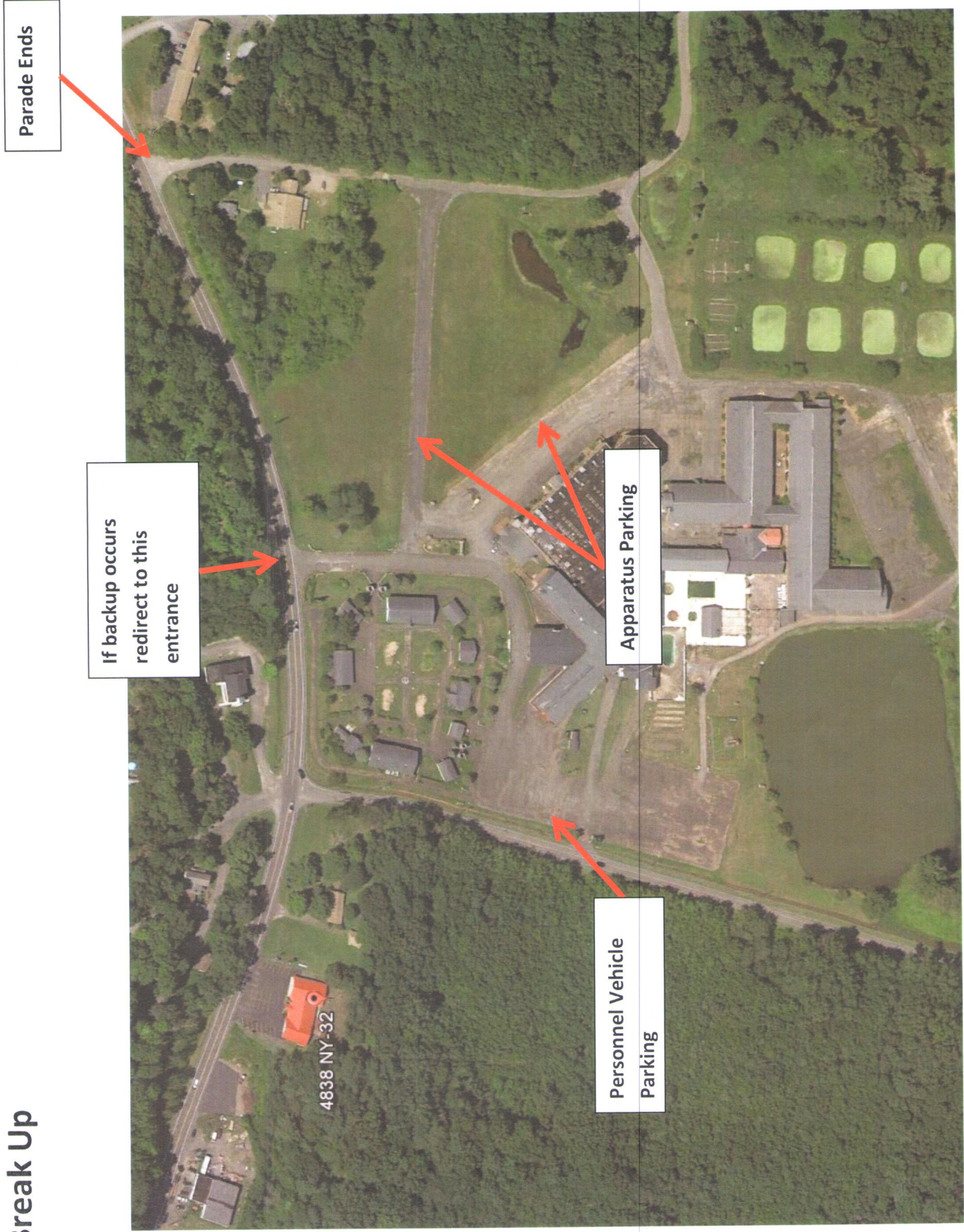
Line Up



Parade Route



Break Up



2016 GCVFA MENS PARADE RULES & REGULATIONS

GENERAL

1. Within a half an hour before the parade starts any fire company or department not in line will go to the rear of the parade or as directed by the host committee.
2. The host company shall supply ample room for each company or department at the line-up area.
3. The host committee will have complete charge of the parade as per the parade rules and regulations.
4. Host units cannot compete for trophies or prizes.
5. No advertising of any type will be permitted in the parade and any breaking of this rule will mean Disqualification.
6. The host will be allowed to invite no more than 3 (three) honored guest companies or departments to parade and they shall parade in the Escort Division. All other guest companies or departments may be dispersed throughout the parade. Associate and guest companies or departments will compete as "Out of County" units.
7. No written scores will leave the judging area unsealed
8. In case of emergency traffic, units will move to the right and stop.
9. Line-up will be left to the discretion of the company or department (See attached suggested lineup sheet)
10. County Officers, dignitaries, counters; Firefighter of the year, Scholarship winners, and Fire Police in uniform will be counted as members in line.
11. Members in vehicles (apparatus or cars) must be clearly visible to counters and judges. (Open dark or tinted windows)
12. Any Fire Unit may compete without music or apparatus.
13. No unauthorized vehicles or participants will be allowed in the parade.
14. Junior Firefighters/Explorers/Restricted Members that March as a separate unit will only be judged using the Marching and the Uniform Category for Rules and Regulations.

MARCHING

1. Any organization with men and women in line other than members will be ineligible for any trophies. Members will be classified as associate, honorary, active, or any firefighter carried on the company's or department's rolls as a member.
2. Any intoxicated marching or riding firefighter or auxiliary member will cause the entire unit to be disqualified from competition automatically.
3. Any Fire unit must have at least five (5) members in line to be eligible for a trophy, other than an apparatus trophy.
4. Anything that hinders the forward movement of the line of March will not be allowed in any part of the parade or unit will be assessed a five (5) point demerit.
5. All members in line will be dressed in a company or department designated uniform.
6. Dress uniforms and regulation uniforms will compete for the same trophy.

COLORGUARD

1. All Units must have a guarded American Flag and failure to do so will result in an automatic disqualification of the entire unit.
2. The American flag must be guarded by at least one member of the Unit, not carrying a flag, to the right of the American Flag.
3. The staff of ALL American flags carried by GCVFA member companies must display an eagle. All eagles must face forward and be carried as straight as possible
4. If another flag is carried, it must be lower in height than the American flag and should be dipped in salutation at the reviewing stand.
5. Do not dip the American Flag.
6. Any Unit not guarding the American flag will be disqualified
7. Only the Officer in Charge will salute at the reviewing stand.

UNIFORM

1. Personal appearance of marching firefighters will be appraised by the judges and one (1) demerit will be taken for each infraction such as buttons unbuttoned and hats, jackets, pants, etc. not the same. Uniformity will prevail. (See attached demerit sheet)
2. Company or Department badges must be worn appropriately. Earned Fire Badges are allowed.
3. Dress Uniforms and Regulation Uniforms will compete for the same trophy.

APPARATUS

1. Carriages and hose carts are exempt from line-up guidelines
2. All members on the apparatus must be in full uniform. Gloves are optional for the drivers of the apparatus/vehicles.
3. A minimum of two (2) members must be on the apparatus in the front positions of the cab. Where there is approved seating on the apparatus (jump seats, crew cab, etc) more than one member(s) may ride.
4. All Apparatus must have a sign placed in the lower right side of the windshield, if equipped, showing the year of the vehicle. Sign should be 8" wide by 6" high.
5. Any siren blown or bells rung or lights lit (other than full time headlights) on any apparatus before, during, and/or after line of march other than in an emergency situation will be disqualified.
6. Apparatus shall conform to Section 375, Parts (2), (4), and (41) of the NYS Vehicle and Traffic Laws (pertaining to red, white, and blue lights). The only exemption to this is that the Blue Light must be visible to the Rear Only as the new law states.
7. There will be no riding on the Rear Step of the apparatus. If so, this will result in an automatic disqualification of the entire unit.

8. All Lights/Warning Devices on the apparatus that are NFPA requirements are exempt. (Blue Lights on Ladders, Green Lights for Command Posts).
9. Apparatus judging before the parade will be set by the Host Company of the Convention. The trucks will be at the area specified by the time the host company states. You will be allowed to bring the truck early and clean it up to the time the judging starts. Anyone cleaning there truck after judging starts will be assessed a 50 point demerit.

JUDGING

1. Judging will be done on the demerit basis. (See attached Score Sheet).
2. The judges will be instructed to judge the parade over its entire length, from Start Line to Finish Line, except that no judges are to be in the immediate area where the residents of the Fireman's Home are assembled to view the parade. Judges will not interfere with the line of March. The Judges will be supplied with a copy of the parade rules and regulations at least one month in advance and the decision of the judges will be final.
3. Judges will come from Outside the County and serve no more than three (3) consecutive years.
4. All judges must circle their judging category, sign their judging sheets with their full names, and must indicate on their sheets reasons for demerits and disqualifications. (judging)
5. Upon completion of the tabulations of scores, all papers will be turned over to the Parade Rules Committee Chairman.
6. There will be no less than five (5) or more than eight (8) judges.
7. Judges will be selected by the host company and approved by the Officers of the Association and Auxiliary and will be dispersed throughout the parade. A minimum of five (5) counters shall be selected by the parade rules committee and be approved by the officers of the association. They will be counted as members in line if they are in full uniform.

TROPHIES

1. In case of a tie for a trophy required by the Association, the Association will purchase the extra trophy. If a host trophy, the host shall be responsible for a duplicate.
2. Any company or department whose dues are not paid by the August meeting will be ineligible for any trophies.
3. Any unit who wins a trophy in its Best Appearing category shall not be eligible for Best Appearing Co. /Dept without Music Trophy.
4. The Millennium Memorial award shall be awarded to the Greene County unit with the Score obtained by averaging the scores of all judges of all categories within the unit, including color guard scores, units marching and uniform scores, apparatus scores, auxiliary's marching and uniform scores (if the auxiliary marches), and junior firefighters (if they march as a separate unit). A unit may earn this trophy without an auxiliary; however, if they have an auxiliary, the auxiliary scores will be included in determining the highest score. Also to be included in the score is one half (1/2) point for attending the Mardi Gras parade. The unit that scores the highest will also be

eligible for awards in all other categories they qualify for. At no time shall points be added to this score for any reason other than what is stated above without approval from the parade rules and regulations committee and the Kiskatom Fire Dept.

2015 GCVFALA LADIES PARADE RULES AND REGULATIONS

GENERAL:

1. No Auxiliary with less than a total of five (5) women shall be eligible to compete for parade prizes, and all must be auxiliary members (including color guard, banner carriers, persons in car, etc.). No non-auxiliary members shall march in unit.
2. Auxiliary units march at the rear of their company or department, but they shall not intermingle with the men while marching. Auxiliary shall march as a separate unit through the designated parade route to be judges. If either unit does not abide by all rules, disqualification of WHOLE unit will occur.
3. Any intoxicated marching firefighter or auxiliary member will cause the entire unit to be eliminated from competition automatically. Carrying of alcoholic beverage on anyone's person and/or any fire apparatus or vehicle shall disqualify the offending unit.
4. If carried, the American Flag must be guarded by one (1) member of the unit not carrying a flag. This guard must be on the American Flag's own right. Eagle must face forward and flag carried as straight as possible. If another flag is carried, it must be lower than the American Flag and should be dipped in salutation at the reviewing stand. **DO NOT DIP THE AMERICAN FLAG.** Non-compliance shall result in Disqualification.
5. No laughing, waving, talking, chewing gum, or smoking in line of march
6. No drilling or performing that hinders the forward movement of the line of march will be allowed in any part of the parade line or march or unit will be assessed five (5) demerits.
7. Officer-in-Charge **MAY** (but it is not necessary) salute at the reviewing stand with military salute. **NOTE:** Improper salute will result in 3 demerits.
8. There shall be no less than four (4) or no more than five (5) judges, preferably female. Judges will come from outside the county, with no Greene County affiliation and to serve no more than three (3) consecutive years.
9. Judging shall be done on a demerit basis; judges shall award an overall score from which demerits shall be subtracted.

APPEARANCE – UNIFORMITY MUST PREVAIL

1. Uniforms must be identical in style and color. The length of the uniform shall conform within the unit.
2. Shoes must be uniform in color and style. Hose must appear similar in color and must be the same style.
3. Hats, if part of uniform, shall be worn in a uniform manner and at the same angle. Length of hair is optional, but neatness must prevail.
4. Use of gloves is optional, however, uniformity prevails.
5. Auxiliary pins or badges shall be worn uniformly. All earned Fire Auxiliary Badges/Pins may be worn.
6. Necessary rings, medical jewelry, and watches are the only permitted jewelry.

7. No unnecessary paraphernalia should be carried on persons. (Nothing should cause bulges in pockets, etc.) Medical Necessities, such as an inhaler are acceptable, but host committee must be notified before the parade starts.
8. Prescription Sunglasses will only be allowed.

LINE UP

1. Line up, (single file, 2 or 3 abreast), shall be left to the discretion of the auxiliary. All members in body are to march at arm's length from member in front and arm's length from member beside. This does not apply to Color Guard and Officer-in-Charge.
2. If units march two (2) abreast, the extra member should march at the end of the right column. In marching three (3) abreast, the extra member(s) shall march at the rear of the right column(s). (Two members – center and right)
3. The American Flag should be carried approximately 10 feet behind the preceding unit. The banner should be carried approximately 10 feet behind the American Flag. If no American Flag is carried, the banner should follow the preceding unit by approximately 10 feet.
4. The Officer-in-Charge shall march in the center approximately 10 feet behind the banner and approximately 5 feet in front of the body of the unit. If no banner is carried, she shall march approximately 10 feet behind the American Flag, if one is carried. If no American Flag is carried, she shall march approximately 10 feet behind the preceding unit.
5. Officer-in-Charge may carry memorial trumpet or wreath.
6. Life, honorary, and incapacitated members may ride in cars to the rear of the unit. Members must be in FULL Uniform. To honor a deceased member, by lying of hat and gloves on back deck of car, or last member in line carrying hat, is acceptable. Judges must be notified before the start of the parade.
7. Members in vehicles must be clearly visible to Counters and Judges. (Open dark or tinted windows.)
8. In case of illness during the line of march, two persons may leave with member who is ill. Unit should fill in and continue line of march.
9. One designated member may call cadence. One calling shall not be in color guard, officer-in-charge, or carrying banner.

ANY VARIATION OF THESE RULES WILL REQUIRE A LETTER OR PHONE NOTIFICATION TO BE SUBMITTED TO THE RULES COMMITTEE CHAIRMAN OF EACH RESPECTIVE ORGANIZATION BY THE START OF THE JULY EXECUTIVE BOARD MEETING SO IT CAN BE DISCUSSED AND IF ANY VARIATIONS MADE CAN BE READ AT THE AUGUST QUARTERLY MEETING AND AT THE CONVENTION MEETINGS.

THE GCVFA CHAIR IS HAROLD RIVENBURGH (518)965-1020. Email is happy_12414@yahoo.com

The GCVFALA CHAIR IS ROBERTA SPRING (518)678-9053.

**TROPHIES TO BE AWARDED BY THE GCVFA AND THE GCVFLA
(HOST COMPANY MAY PROVIDE EXTRA TROPHIES)**

BEST APPEARING UNIT - 5 TO 8 IN LINE

BEST APPEARING UNIT 1ST PLACE - 9 TO 15 IN LINE
BEST APPEARING UNIT 2ND PLACE- 9 TO 15 IN LINE
BEST APPEARING UNIT 3RD PLACE- 9 TO 15 IN LINE

BEST APPEARING UNIT 1ST PLACE – 16 TO 24 IN LINE
BEST APPEARING UNIT 2ND PLACE - 16 TO 24 IN LINE
BEST APPEARING UNIT 3RD PLACE - 16 TO 24 IN LINE

BEST APPEARING UNIT 1ST PLACE - 25 AND OVER IN LINE
BEST APPEARING UNIT 2ND PLACE - 25 AND OVER IN LINE

BEST APPEARING APPARATUS 1 – 5 YEARS – 1ST PLACE
BEST APPEARING APPARATUS 1 – 5 YEARS – 2ND PLACE
BEST APPEARING APPARATUS 6 - 12 YEARS – 1ST PLACE
BEST APPEARING APPARATUS 6 - 12 YEARS – 2ND PLACE
BEST APPEARING APPARATUS 13-20 YEARS – 1ST PLACE
BEST APPEARING APPARATUS 13-20 YEARS – 2ND PLACE
BEST APPEARING APPARATUS 21 PLUS YEARS – 1ST PLACE
BEST APPEARING APPARATUS 21 PLUS YEARS - 2ND PLACE

BEST APPEARING MOTOR DRIVEN ANTIQUE APPARATUS OUT OF SERVICE

ANY VARIATION OF THESE RULES WILL REQUIRE A LETTER OR PHONE NOTIFICATION TO BE SUBMITTED TO THE RULES COMMITTEE CHAIRMAN OF EACH RESPECTIVE ORGANIZATION BY THE START OF THE JULY EXECUTIVE BOARD MEETING SO IT CAN BE DISCUSSED AND IF ANY VARIATIONS MADE CAN BE READ AT THE AUGUST QUARTERLY MEETING AND AT THE CONVENTION MEETINGS.

THE GCVFA CHAIR IS HAROLD RIVENBURGH (518)965-1020. Email is happy_12414@yahoo.com

The GCVFALA CHAIR IS ROBERTA SPRING (518)678-9053.

**TROPHIES TO BE AWARDED BY THE GCVFA AND THE GCVFLA
(HOST COMPANY MAY PROVIDE EXTRA TROPHIES)**

BEST APPEARING UNIT - 5 TO 8 IN LINE

BEST APPEARING UNIT 1ST PLACE - 9 TO 15 IN LINE
BEST APPEARING UNIT 2ND PLACE- 9 TO 15 IN LINE
BEST APPEARING UNIT 3rd PLACE- 9 TO 15 IN LINE

BEST APPEARING UNIT 1ST PLACE – 16 TO 24 IN LINE
BEST APPEARING UNIT 2ND PLACE - 16 TO 24 IN LINE
BEST APPEARING UNIT 3rd PLACE - 16 TO 24 IN LINE

BEST APPEARING UNIT 1ST PLACE - 25 AND OVER IN LINE
BEST APPEARING UNIT 2ND PLACE - 25 AND OVER IN LINE

BEST APPEARING APPARATUS 1 – 5 YEARS – 1ST PLACE
BEST APPEARING APPARATUS 1 – 5 YEARS – 2ND PLACE
BEST APPEARING APPARATUS 6 - 12 YEARS – 1ST PLACE
BEST APPEARING APPARATUS 6 - 12 YEARS – 2nd PLACE
BEST APPEARING APPARATUS 13-20 YEARS – 1ST PLACE
BEST APPEARING APPARATUS 13-20 YEARS – 2nd PLACE
BEST APPEARING APPARATUS 21 PLUS YEARS – 1st PLACE
BEST APPEARING APPARATUS 21 PLUS YEARS - 2nd PLACE

BEST APPEARING MOTOR DRIVEN ANTIQUE APPARATUS OUT OF SERVICE

SUGGESTED LINEUP

Unit Ahead of You

I

(30 – 50 foot Maximum)

I

BAND

I

(15 feet)

I

COLOR GUARD

I

(10 feet)

I

BANNER

I

(10 feet)

I

CHIEF

I

(5 foot)

Asst CHIEFS

Asst CHIEFS

I

(Arm's Length)

MEMBERS

MEMBERS

(UNIT LINEUP LEFT TO THE DISCRETION OF THE CO. OR DEPT.)

I

(10 feet)

I

AUXILIARY

I

(20 feet)

I

CARS

I

APPARATUS